

TACHC



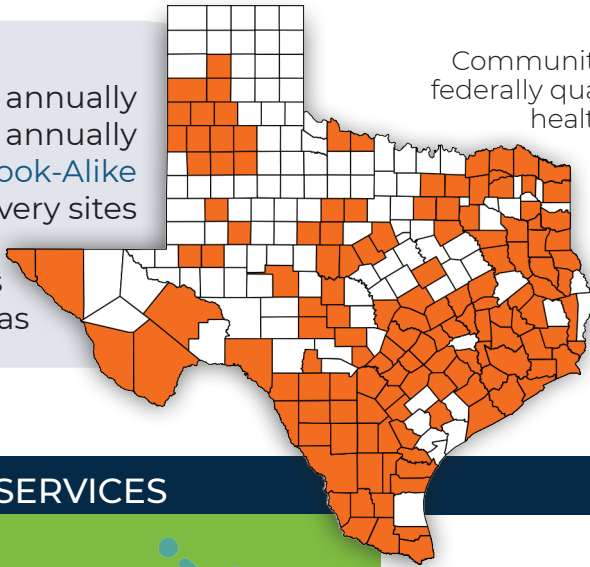
Texas Association of Community Health Centers

Texas Health Centers*

1.6 million patients served annually
 5.6 million patient visits annually
 72 FQHCs and 1 FQHC Look-Alike
 Over 650 service delivery sites
 Located in 137 counties



across
 Texas



Community health centers (also known as federally qualified health centers, FQHCs, or health centers) provide high-quality, affordable, primary and preventive health care services to people who otherwise may lack access to medical care due to where they live, lack of insurance, language barriers, income level or their complex health care needs. At least 51% of all health center governing boards must be made up of patients.

COMPREHENSIVE SERVICES



Percentage of centers offering:

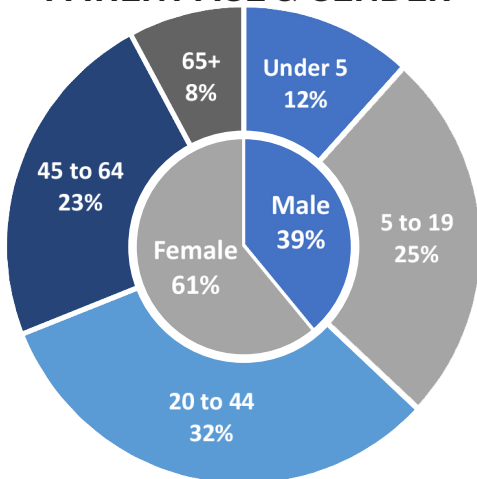
- » SUD services 49%
- » Behavioral Health services 96%
- » Oral health services 92%



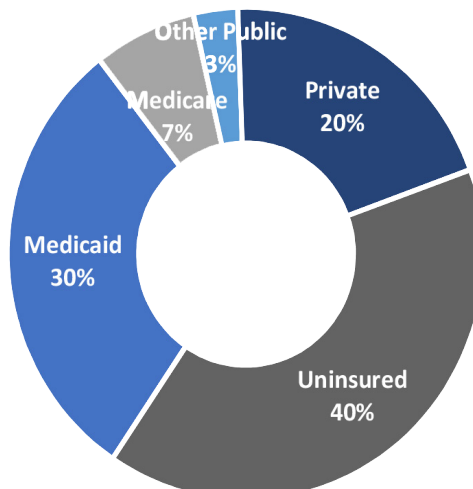
Texas Health Center Patients

Health centers maintain an open-door policy, ensuring everyone receives care regardless of financial status. For patients without insurance who self-pay, health centers use sliding scale fees based on patient income.

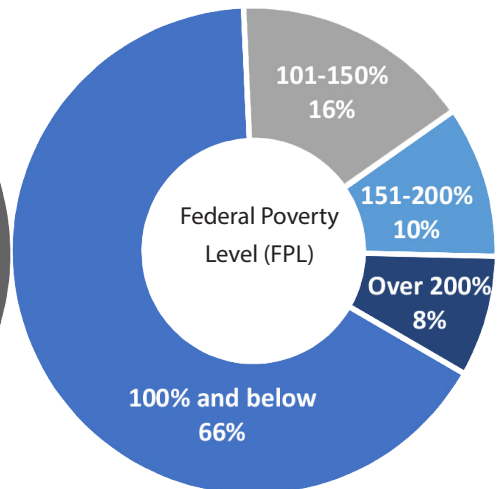
PATIENT AGE & GENDER



PATIENT INSURANCE

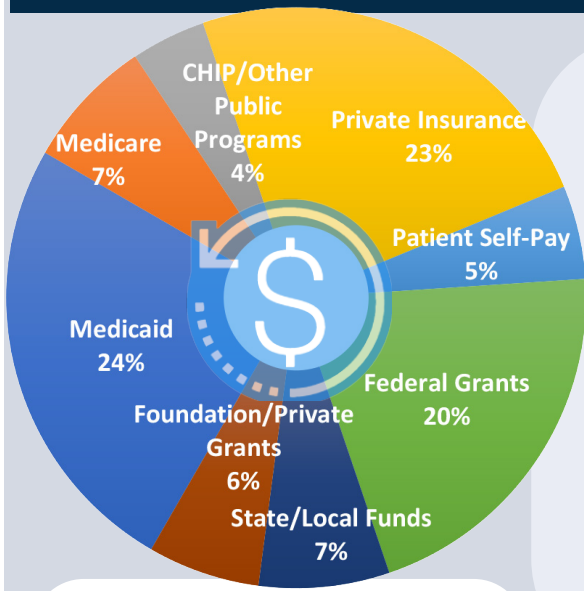


PATIENT INCOME**



* 2020 UDS data includes statistics for all the recognized FQHCs and FQHC look-alikes in 2020.
 **Estimated

HEALTH CENTERS: A STRONG COMMUNITY INVESTMENT



Texas Health centers serve 12.2% of the Medicaid population in the state and comprises only 1.2% of the TX Medicaid budget.

Health centers are a driving economic force in their communities, **adding over \$2.3 billion annually*** to the Texas economy, employing **11,850** staff and generating **16,107** jobs.

Revenue Sources

Health center revenue comes from a variety of sources. Medicaid dollars represent the largest source, accounting for **24%** of total health center funds. Health centers also receive **20%** of their revenue from federal grants used primarily to fund care for the uninsured. State and local funding comprise **7%** of health center revenue. Patient self-pay revenues account for **5%** of total health center income.

Economical Care

Health centers provide preventive care and assist patients to effectively manage chronic conditions such as hypertension and diabetes. Research shows that effective preventive care and chronic disease management reduces the need for more costly hospital emergency room care, saving the healthcare system \$24 billion every year.

**Source: IMPLAN 2018 Data and Health*

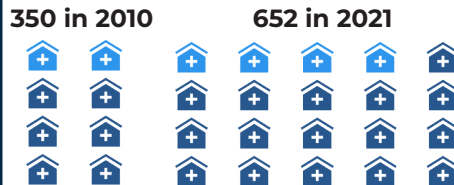
Community Health Centers: Caring for Texas Families

Average Annual Cost of Caring for Patients

- ➔ Medical **\$658**
- ➔ Dental **\$640**
- ➔ Behavioral Health **\$750**

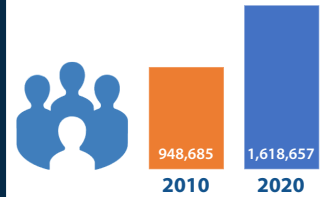


New FQHC Sites



90% Increase

Patient Growth



70% Increase

EXPANDING A QUALITY WORKFORCE

Texas health centers depend upon a primary care workforce of 7,900 integrated and multidisciplinary clinical care staff members to provide high quality, patient-centered care that is comprehensive, accessible and affordable. Health centers are building the infrastructure that supports coordinated care, continuity of care and quality improvement in order to enhance access to primary care while improving patient health outcomes.

Texas Health Centers by Numbers

- 77%** Nationally recognized with Patient Centered Medical Home certification (PCMH)
- 36%** Integrating principles and practices of Trauma Informed Care (TIC)
- 53%** Participating in Project ECHO® and ECHO like programs to enhance skill building and workforce development
- 100%** Providing virtual (telehealth) services

Texas Health Centers Clinical Care Staff

- 755 Physicians
- 780 Nurse Practitioners/Physician Assistants/Certified Nurse Midwives
- 297 Dentists/Dental Hygienists
- 603 Mental Health/Substance Abuse Providers
- 40 Vision Care Providers
- 378 Pharmacy Personnel
- 1,237 Enabling Services Personnel
- 3,871 Other Medical/Dental Personnel

Texas Association of Community Health Centers