

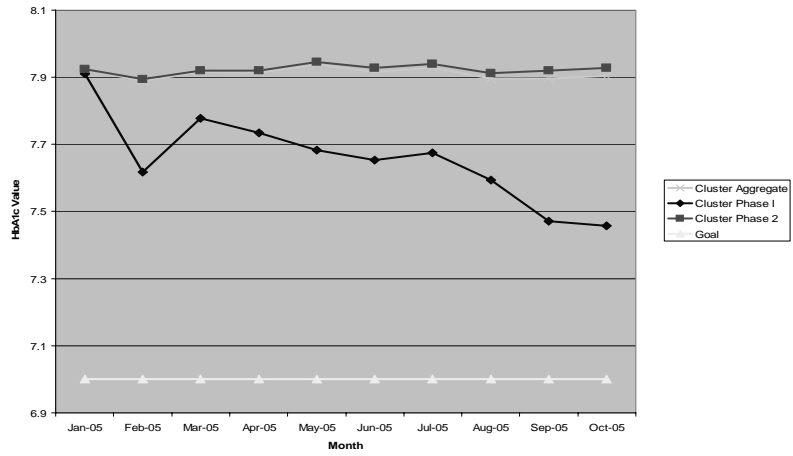
HDC WCC Cluster Data

WCC October 2005 Report

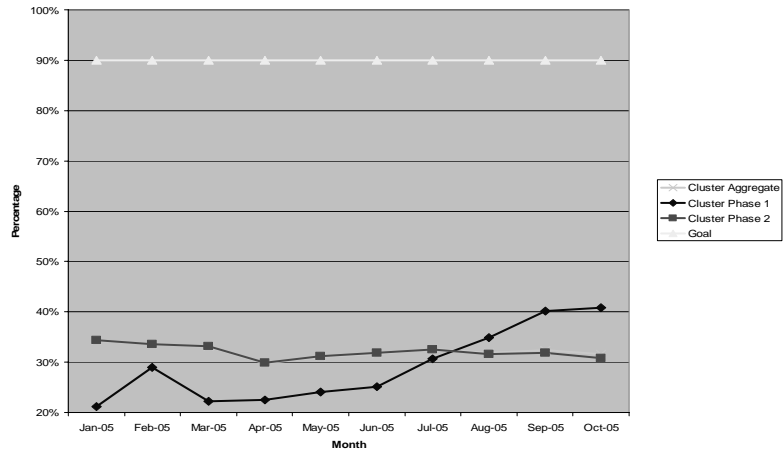
Registry Totals

State	HDC Registry	Unregistered	UDS Data	% of Total UDS
Utah	1,548	77,032	78,580	1.97%
Wyoming	1,037	19,115	20,152	5.15%
Oklahoma	1,609	77,545	79,154	2.03%
Louisiana	3,650	97,628	101,278	3.60%
Arkansas	10,452	94,437	104,889	9.96%
N Dakota	1,430	20,210	21,640	6.61%
S Dakota	5,304	45,339	50,643	10.47%
Montana	3,788	62,404	66,192	5.72%
New Mexico	10,896	198,932	209,828	5.19%
Texas	25,294	536,771	562,065	4.50%
Colorado	22,842	369,527	392,369	5.82%
TOTAL	87,850	1,598,940	1,686,790	5.21%

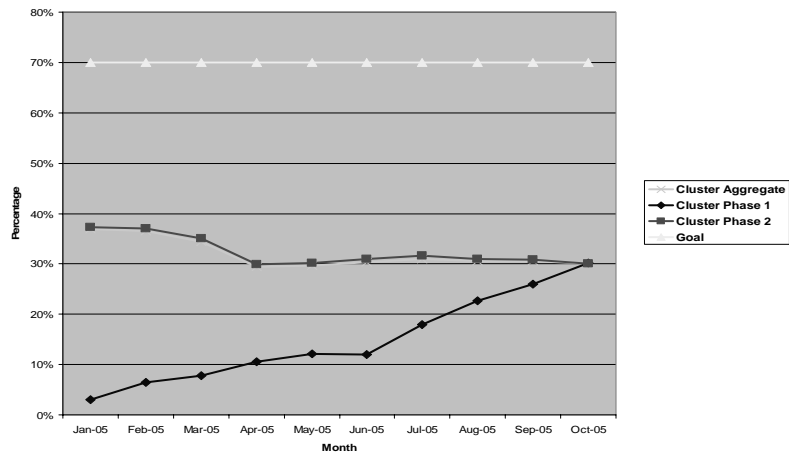
Average Weighted HbA1c



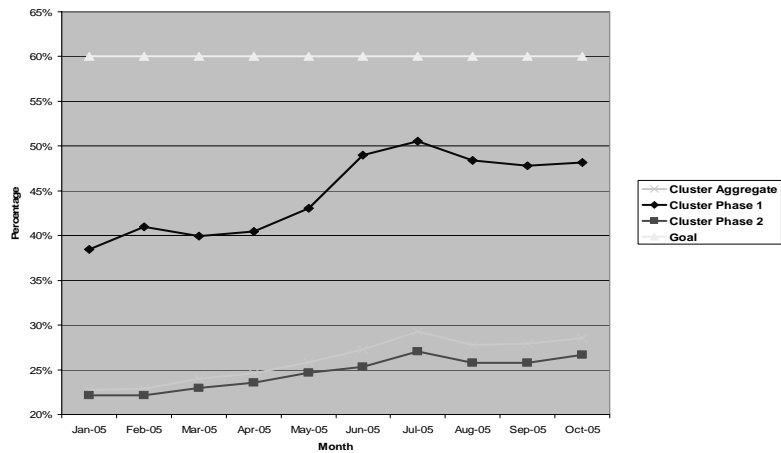
Percentage of Diabetes Patients With Two or More HbA1c in Last 12 Months



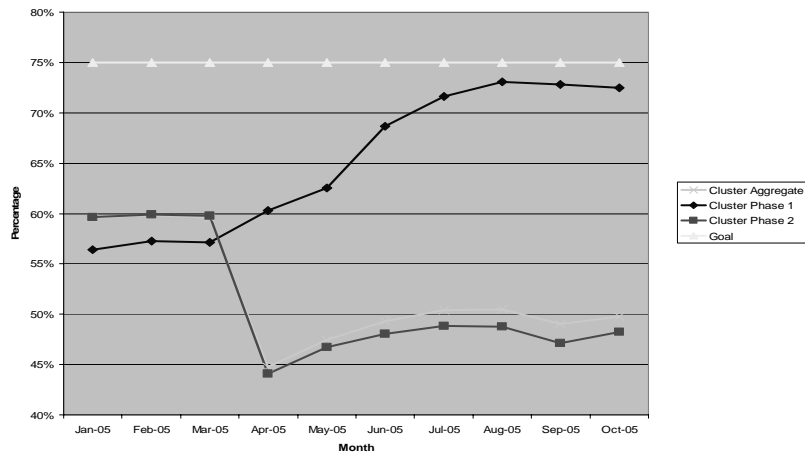
Percentage of Diabetes Patients With a Self Management Goal



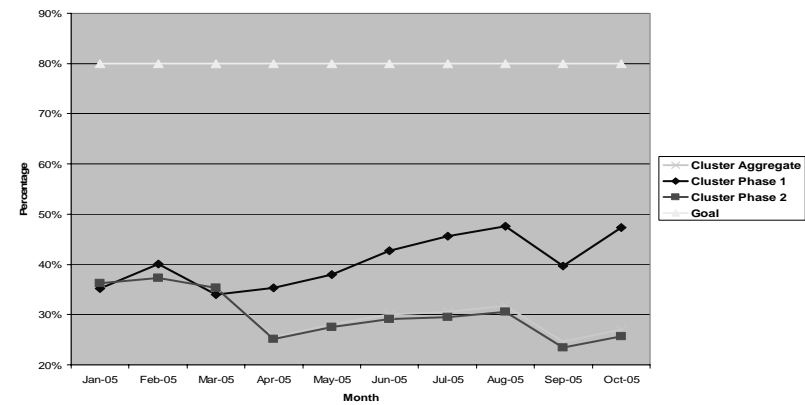
Percentage of Diabetes Patients (>=40 yrs) on Statins



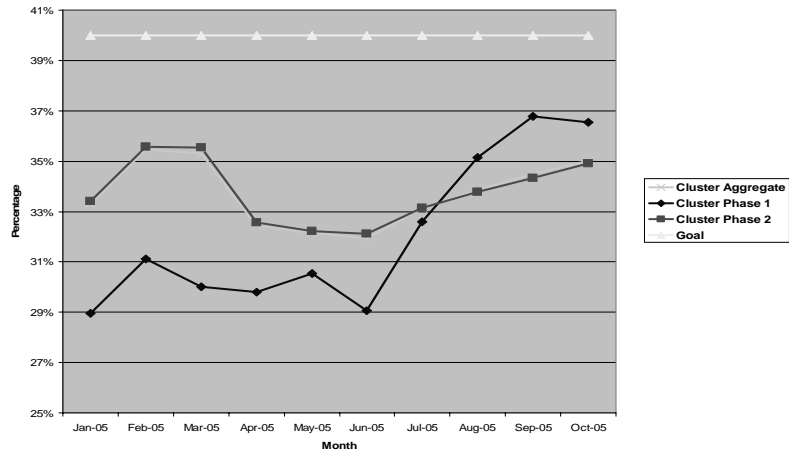
Percentage of Diabetes Patients (≥ 55 yrs) on ACE Inhibitors or ARBs



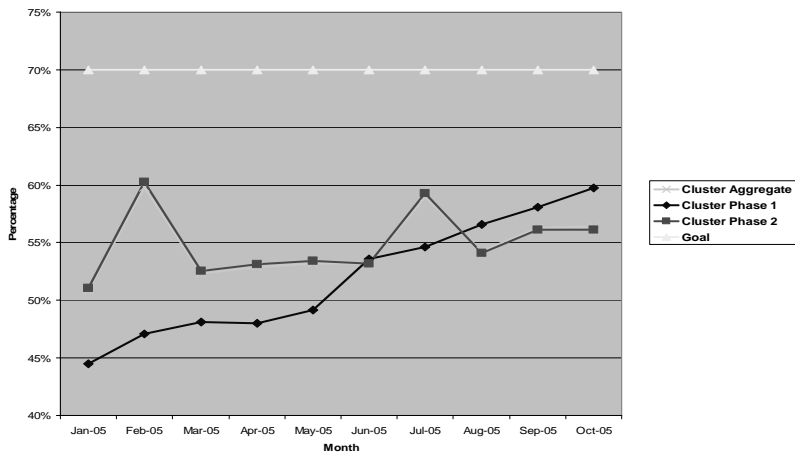
Percentage of Diabetes Patients (≥ 30 yrs) on Aspirin/Antithrombotics



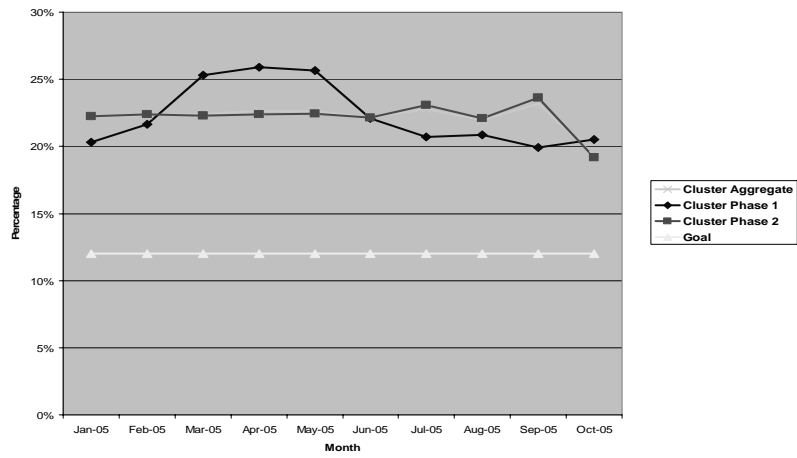
Percentage of Diabetes Patients With Blood Pressure Less Than 130/80



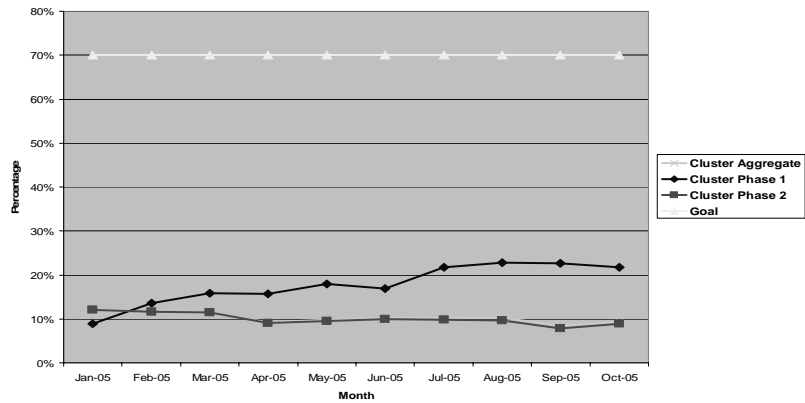
Percentage of Diabetes Patients With LDL Less Than 100



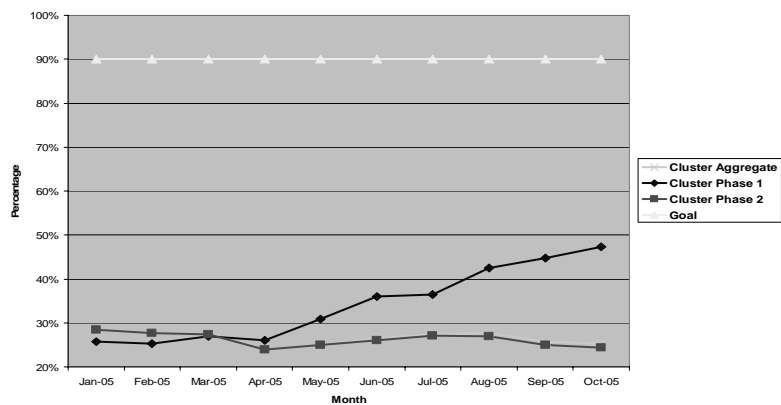
Percentage of Diabetes Patients Who Are Current Smokers



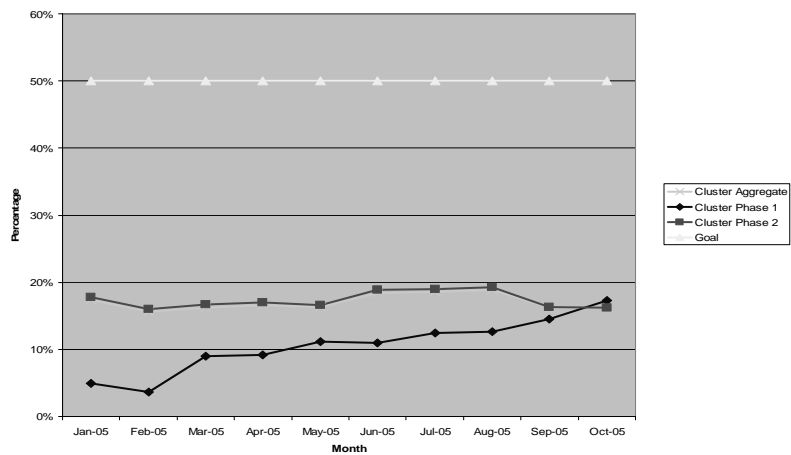
Percentage of Diabetes Patients Received a Dilated Eye Exam in the Last Year



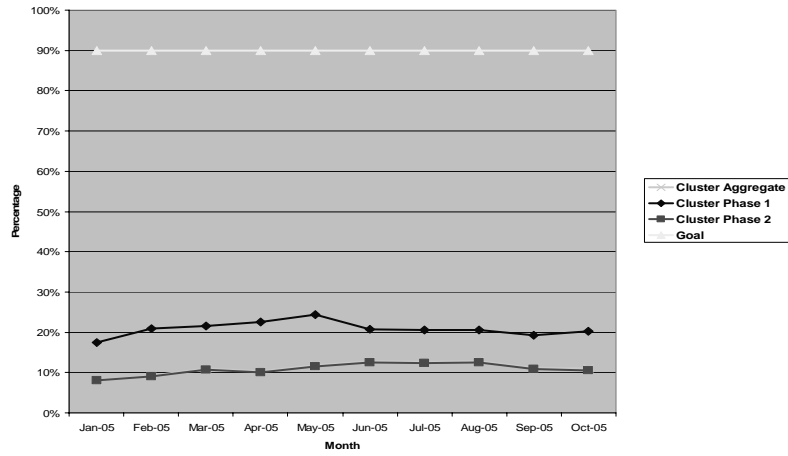
Percentage of Diabetes Patients With a Foot Exam in the Last Year



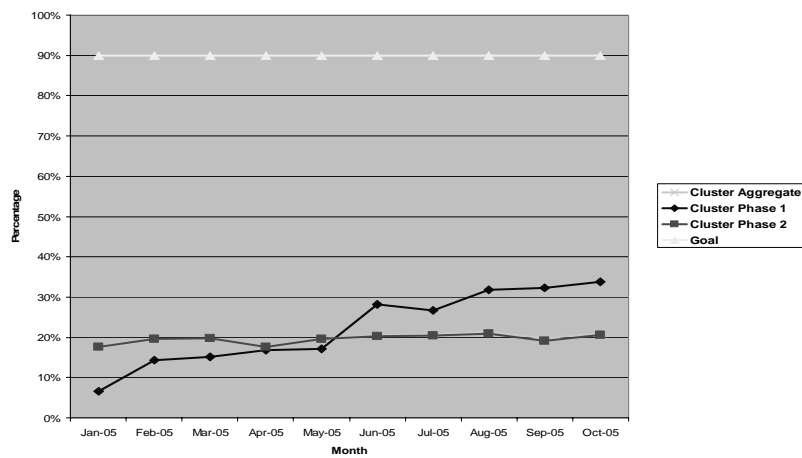
Percentage of Diabetes Patients (≥ 12 and < 70 Not on ACEI or ARB) With Microalbuminuria Screening in the Last Year



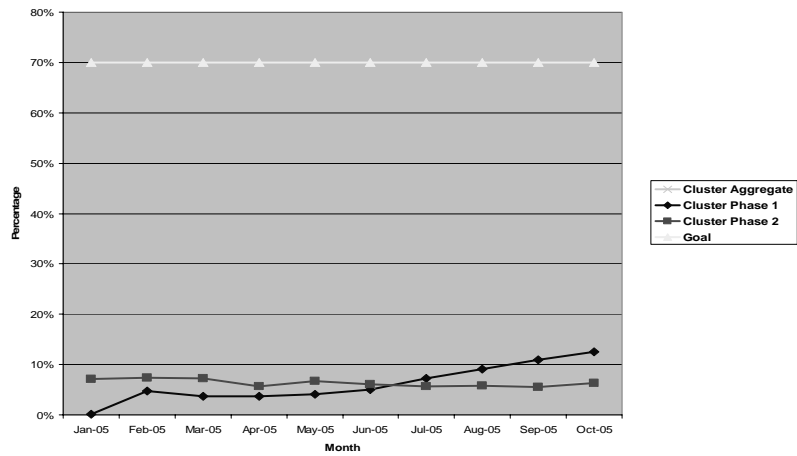
Percentage of Diabetes Patients that Received the Influenza Vaccine Within the Last Year



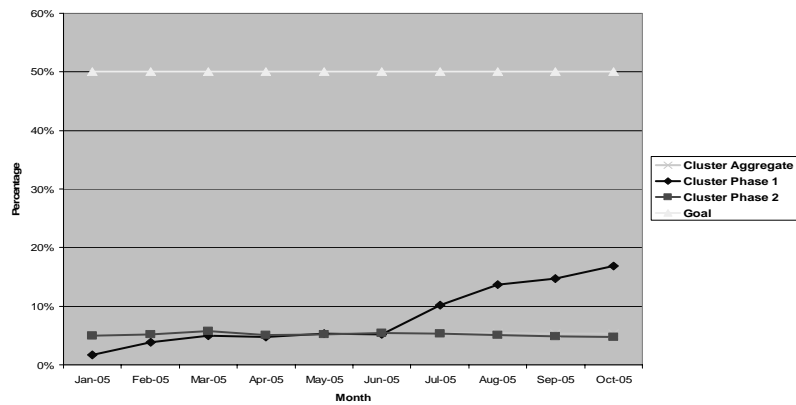
Percentage of Diabetes Patients With a Pneumococcal Vaccine Within the Last Year



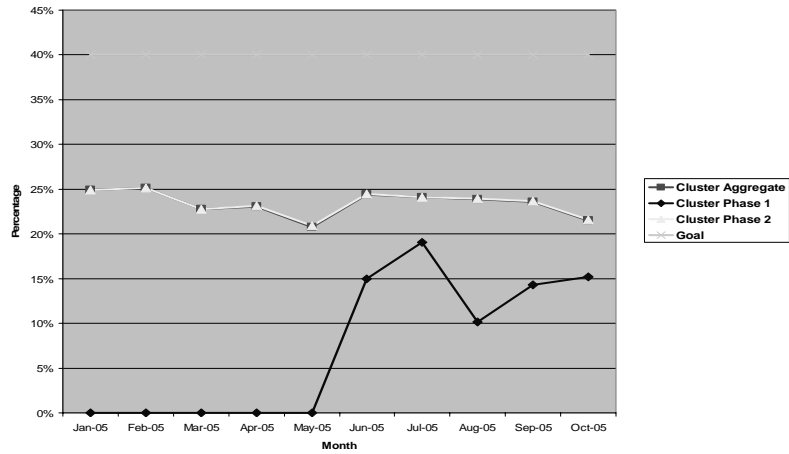
Percentage of Diabetes Patients With a Dental Exam Within the Last Year



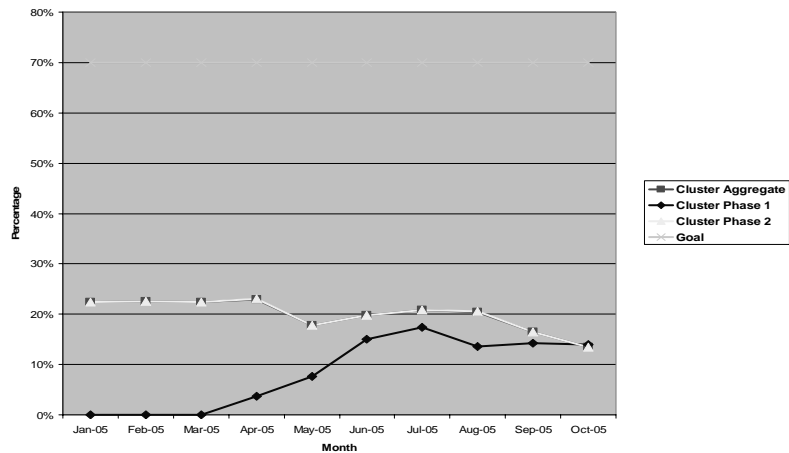
Percentage of Diabetes Patients With a Depression Screening Within the Last Year



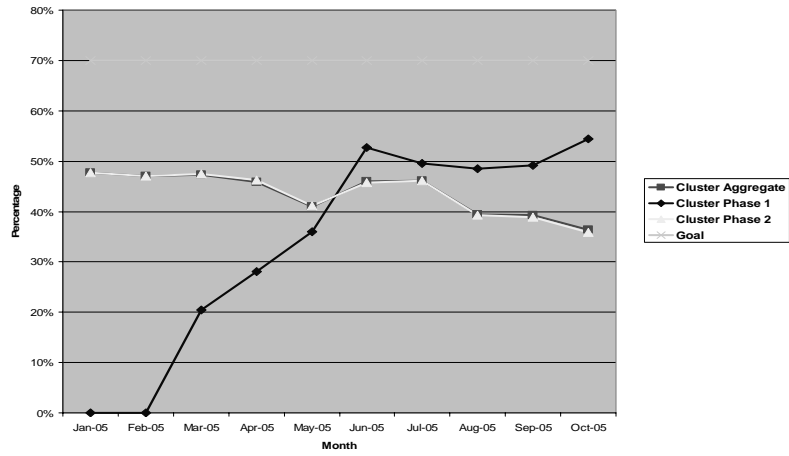
Percentage of Patients with Clinically Significant Depression Experiencing a 50% Reduction in PHQ



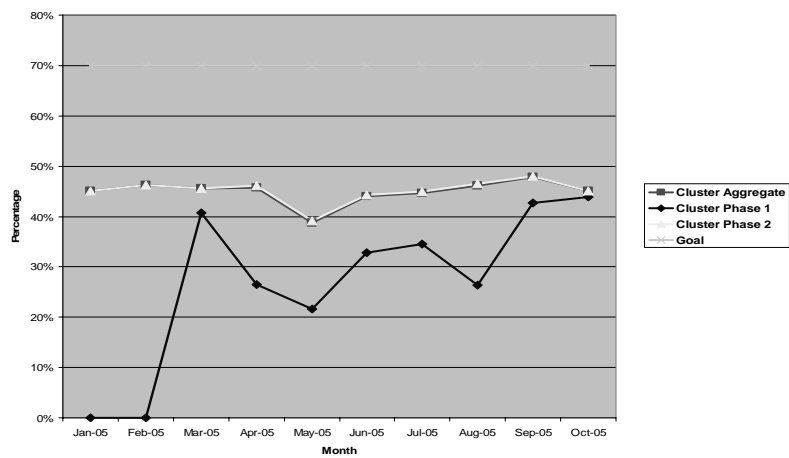
Percentage of Patients with Clinically Significant Depression Receiving a PHQ Reassessment Between 4-8 Weeks of Last New Episode PHQ



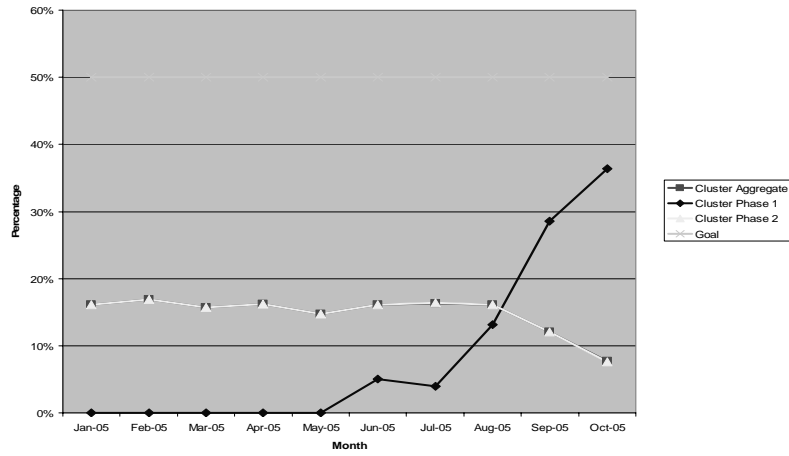
Percentage of Patients With a Diagnosis of Depression & a Documented PHQ Score Within the Last 6 Months



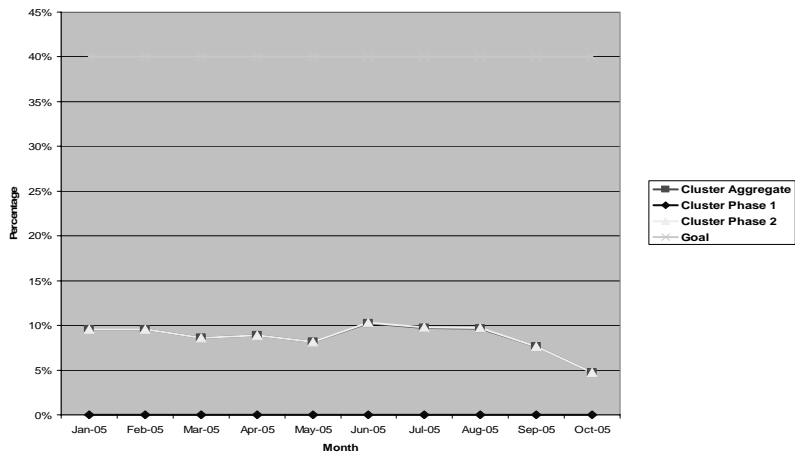
Percentage of Depression Patients with SM Goal Setting in Last 12 Months



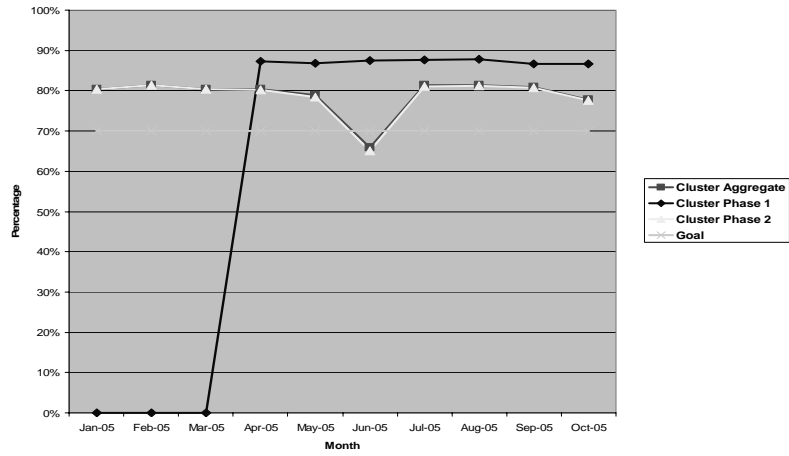
Percentage of CSD Patients Who, 4 Months or Longer After Last New Episode PHQ, Have 50% Reduction in PHQ Score (New Episode PHQ Within Last 12 months)



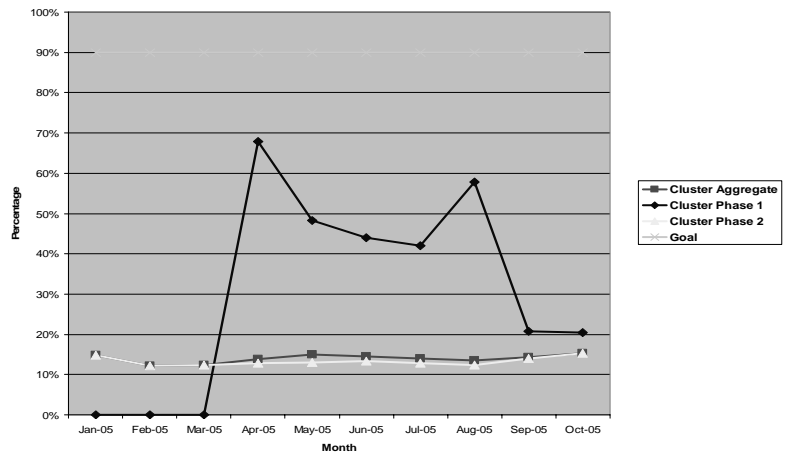
Percentage of CSD Patients With PHQ Score Less Than 5 at Least 4 months After Last New Episode PHQ (New Episode PHQ Within Last 12 months)



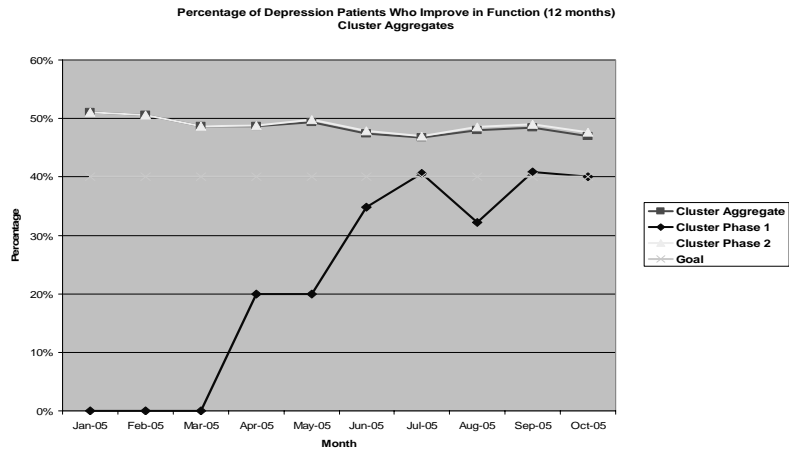
Percentage of Depression Patients With a Diagnosis of Major Depression or Dysthymia on an Antidepressant at Last Visit



Percentage of Depression Patients With Diagnoses of Minor Depression, Depression NOS, or Adjustment Disorder (PHQ <10) NOT on an Antidepressant



Percentage of Depression Patients Who Improve in Function (12 months)



Percentage of Patients with a Diagnosis of Major Depression or Dysthymic Disorder Remaining on Antidepressants at Least 6 Months

