



WCC Steering Committee/PCA Retreat State Coordinator Presentation



Jessica Sanchez
February 5, 2005
ND, SD, MT, NM

HDC Participation



	Total # CHCs	# CHCs participating	Total # sites	# sites participating
ND	5	4	12	6
SD	7	6	28	20
MT	12	10	18	16
NM	14	13	75	37



Total Number of Health Centers by Phase

- North Dakota:
 - Phase 1: 2
 - Phase 2: 2
- South Dakota:
 - Phase 2: 6
- Montana:
 - Phase 1: 3
 - Phase 2: 7
- New Mexico:
 - Phase 1: 3
 - Phase 2: 10



HDC Participation: Other Conditions and Pilots

- Family Health Care Center, ND
 - BPHC: Planned Care and Prevention
 - Health Center: Refugee, Anticoagulation, Perinatal risk management
 - WCC: Access Redesign Mini Collaborative (ARMC)
- Sioux River Valley, SD: ARMC
- Ben Archer, NM: ARMC
- Community Health Partners, MT: ARMC
- Cooperative Health, MT: ARMC



DIABETES: North Dakota

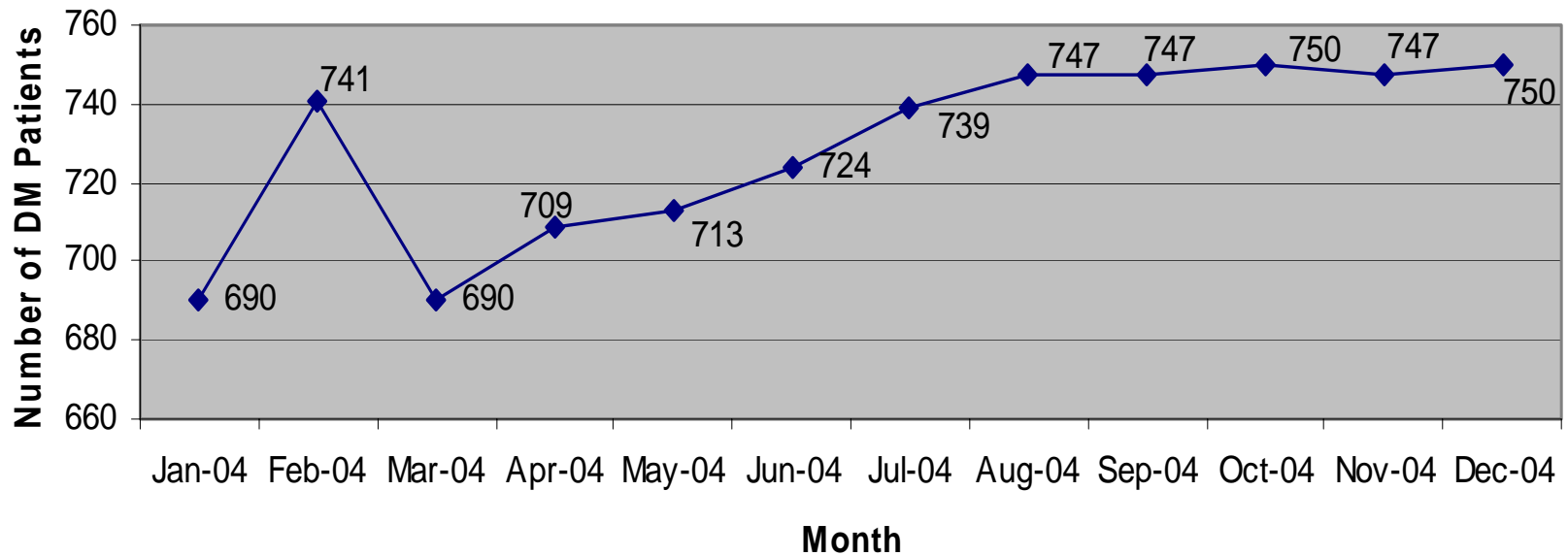
Total number Health Centers and Sites:

- Altru(2)
- Valley (1)
- Family Health Care (2)
- Coal Country (1)

Registry Size

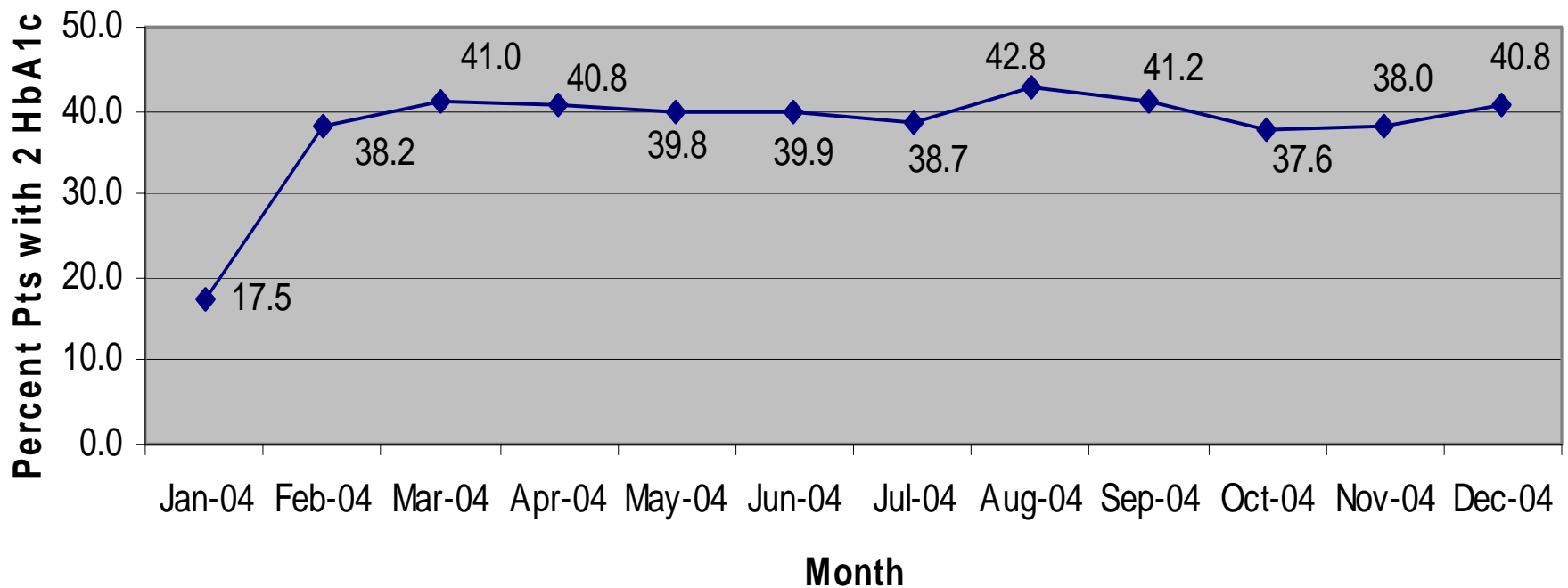


Number of DM Patients

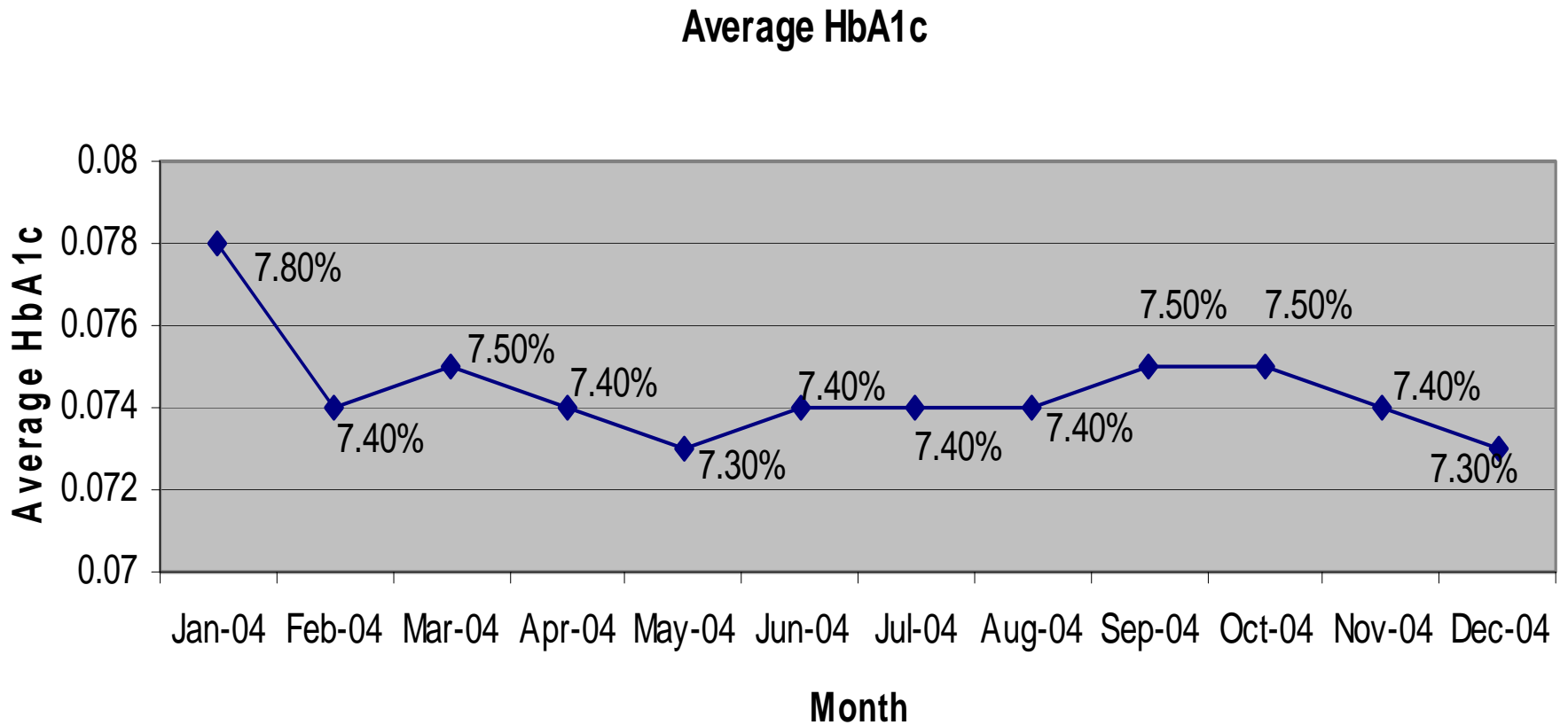


% Patients w/2 HbA1c in the last year

Percent Patients with 2 HbA1c

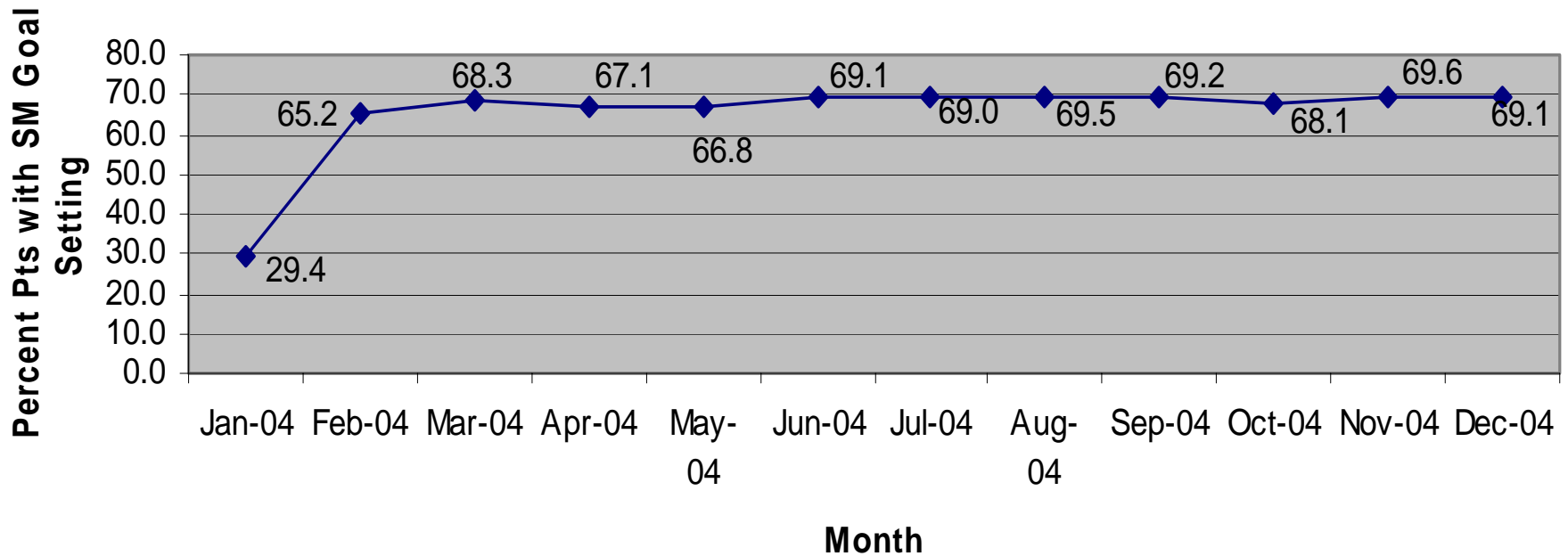


Average HbA1c



% Patients w/Self Management Goal Setting

Percent Patients with SM Goal Setting



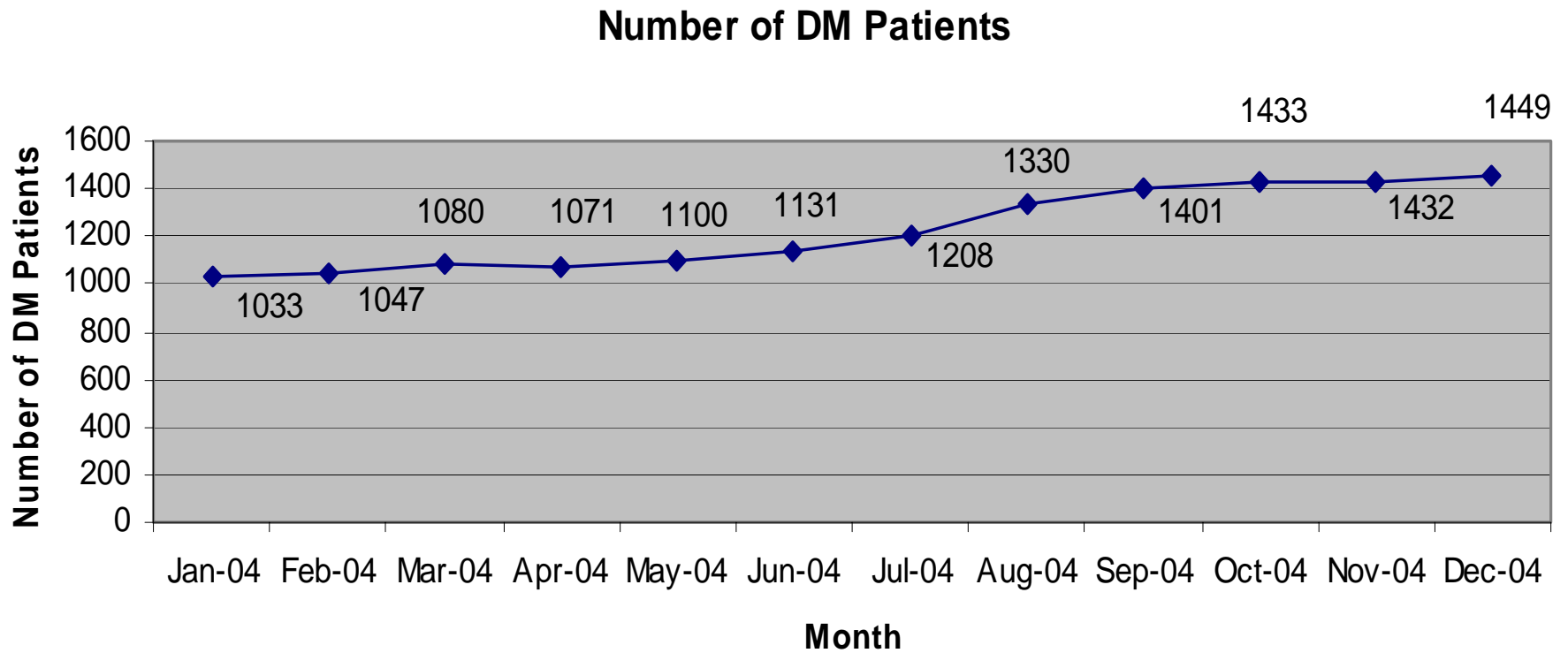


DIABETES: South Dakota

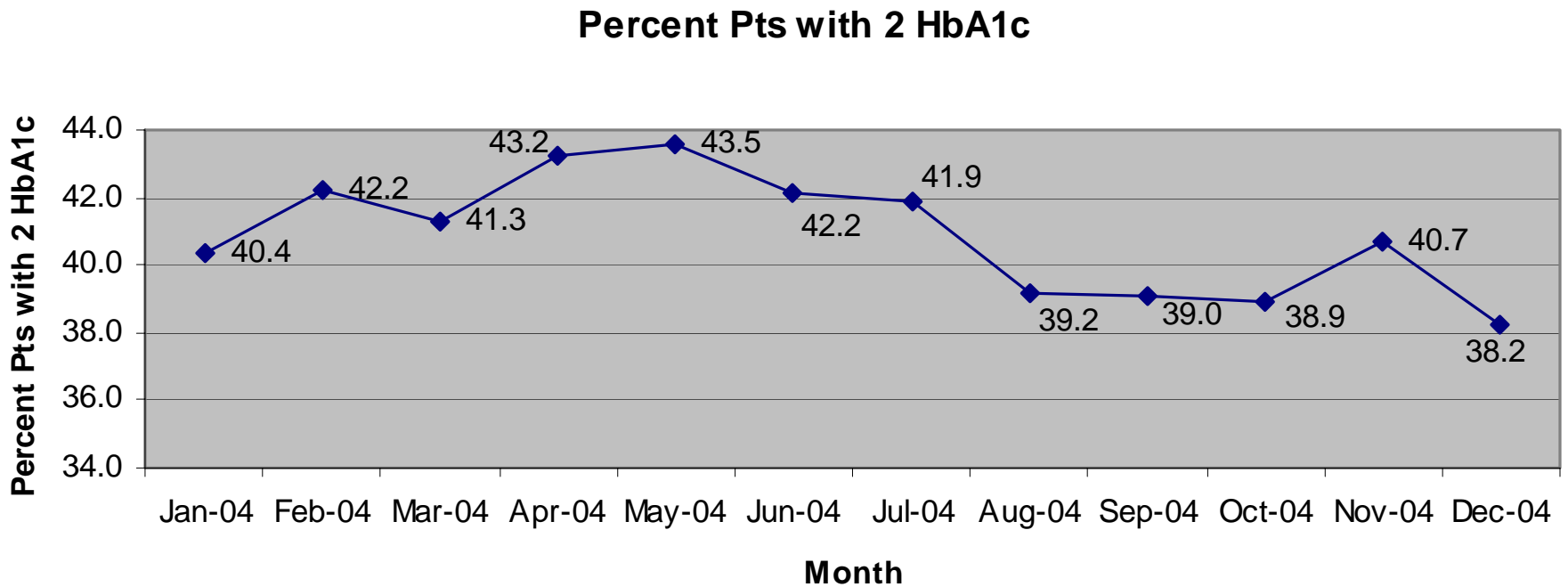
Total Number Health Centers and Sites

- Horizon (7)
- Sioux River Valley (1)
- Rapid City (1)
- Prairie (1)
- Rural (4)
- Union (1)

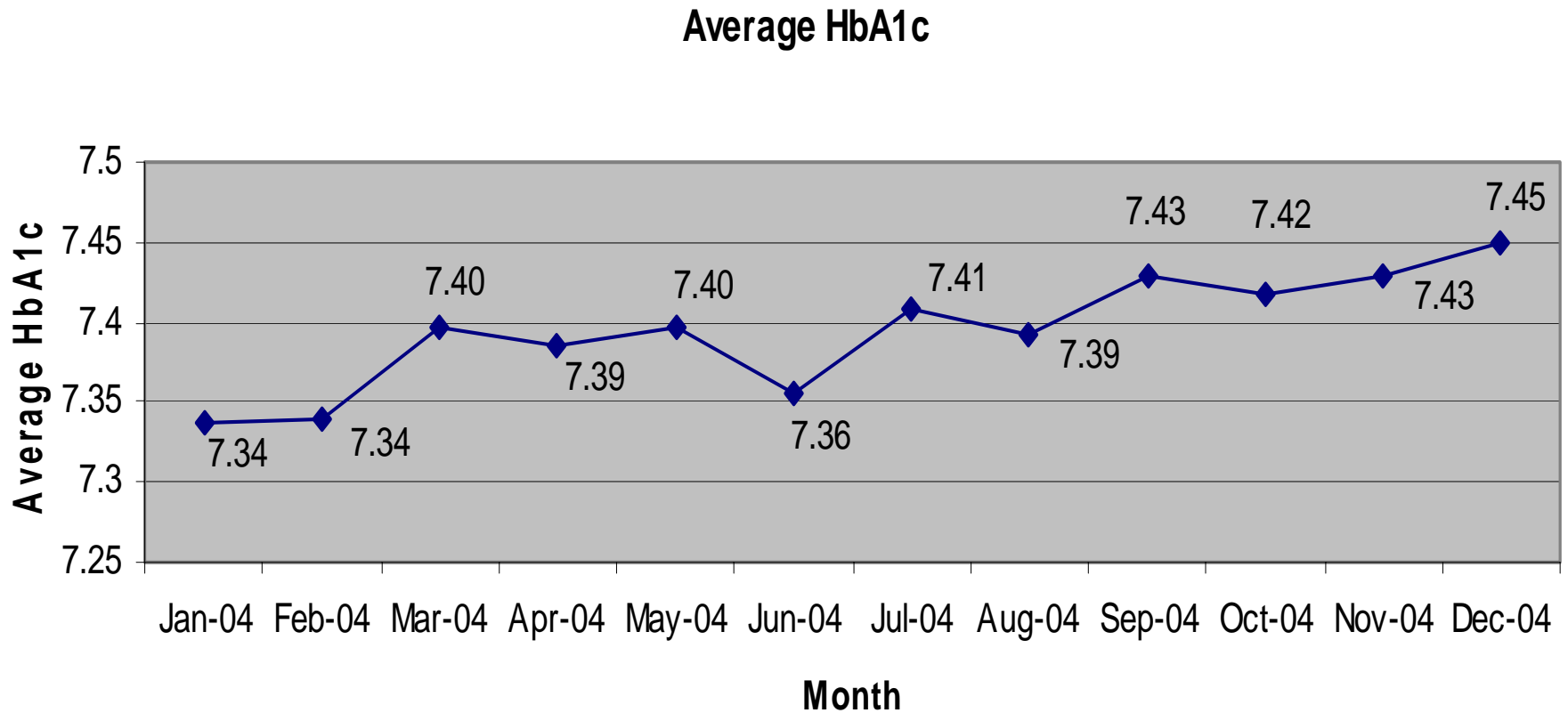
Registry Size



% Patients w/2 HbA1c in the last year

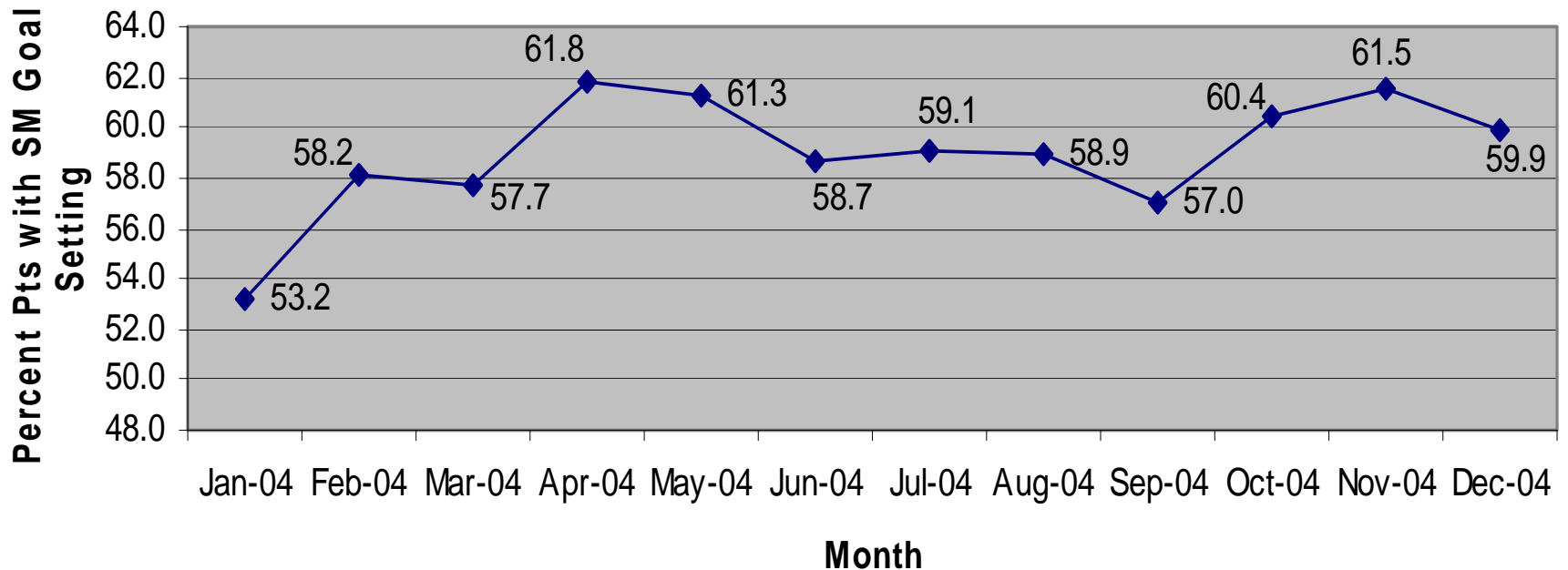


Average HbA1c



% Patients w/Self- Management Goal Setting

Percent Pts with SM Goal Setting

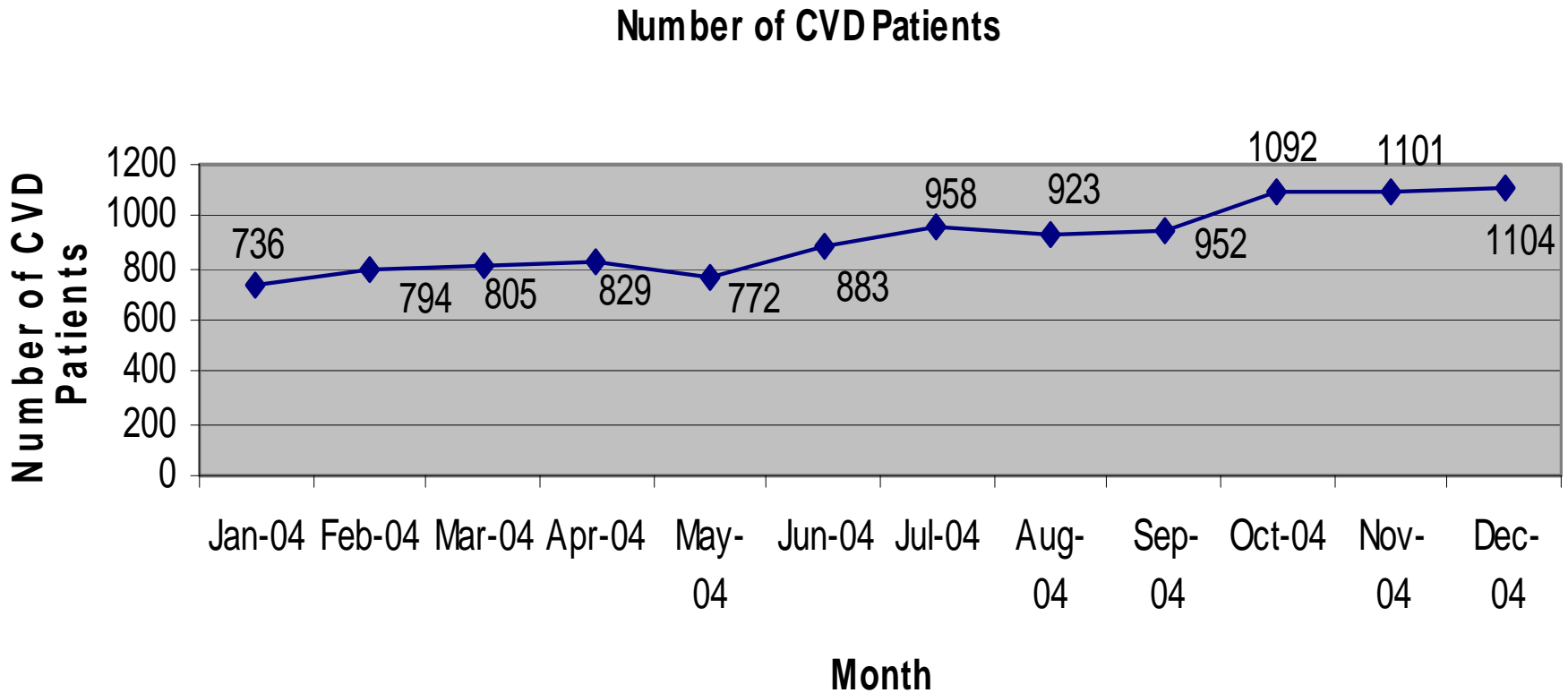




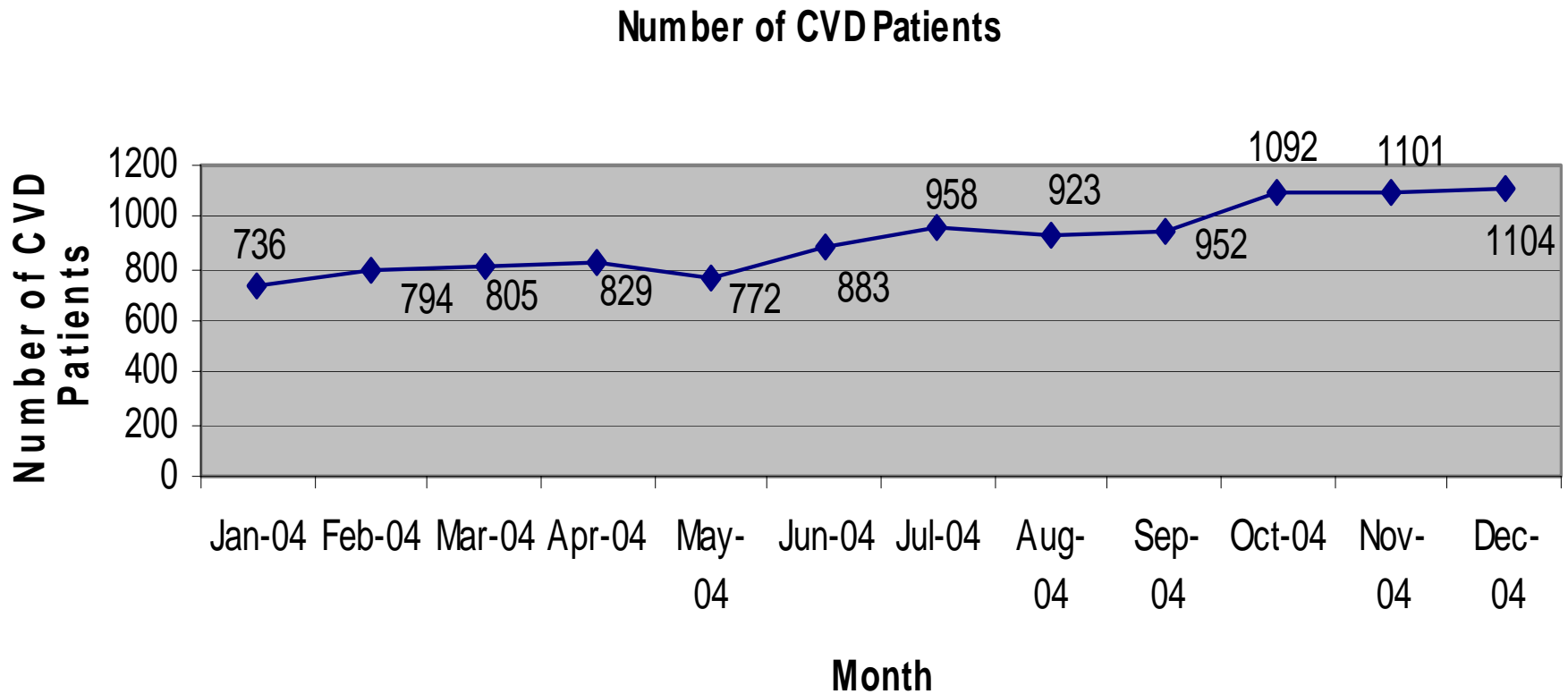
CARDIOVASCULAR: South Dakota

- Total Number Health Centers and Sites
 - Horizon (2)
 - Rural (4)
 - Union (1)

Registry Size # pts with CVD

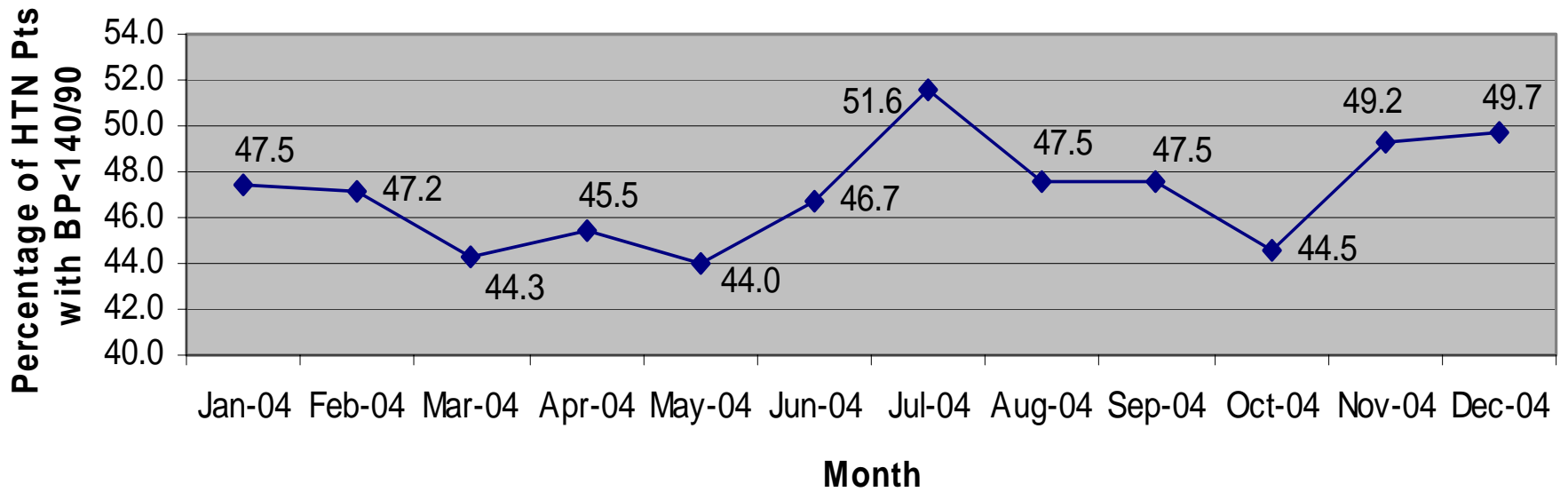


Registry Size # pts with HTN



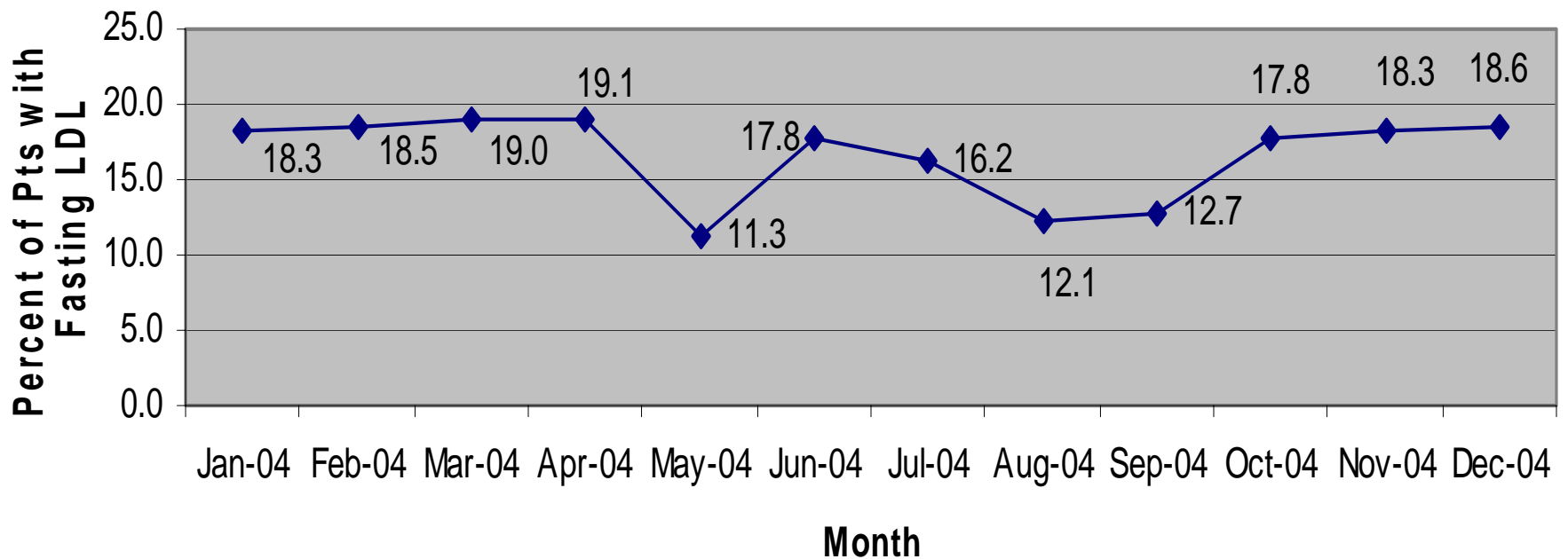
% w/Blood Pressure < 140/90

Percentage of HTN Pts with BP<140/90



Patients with Fasting LDL

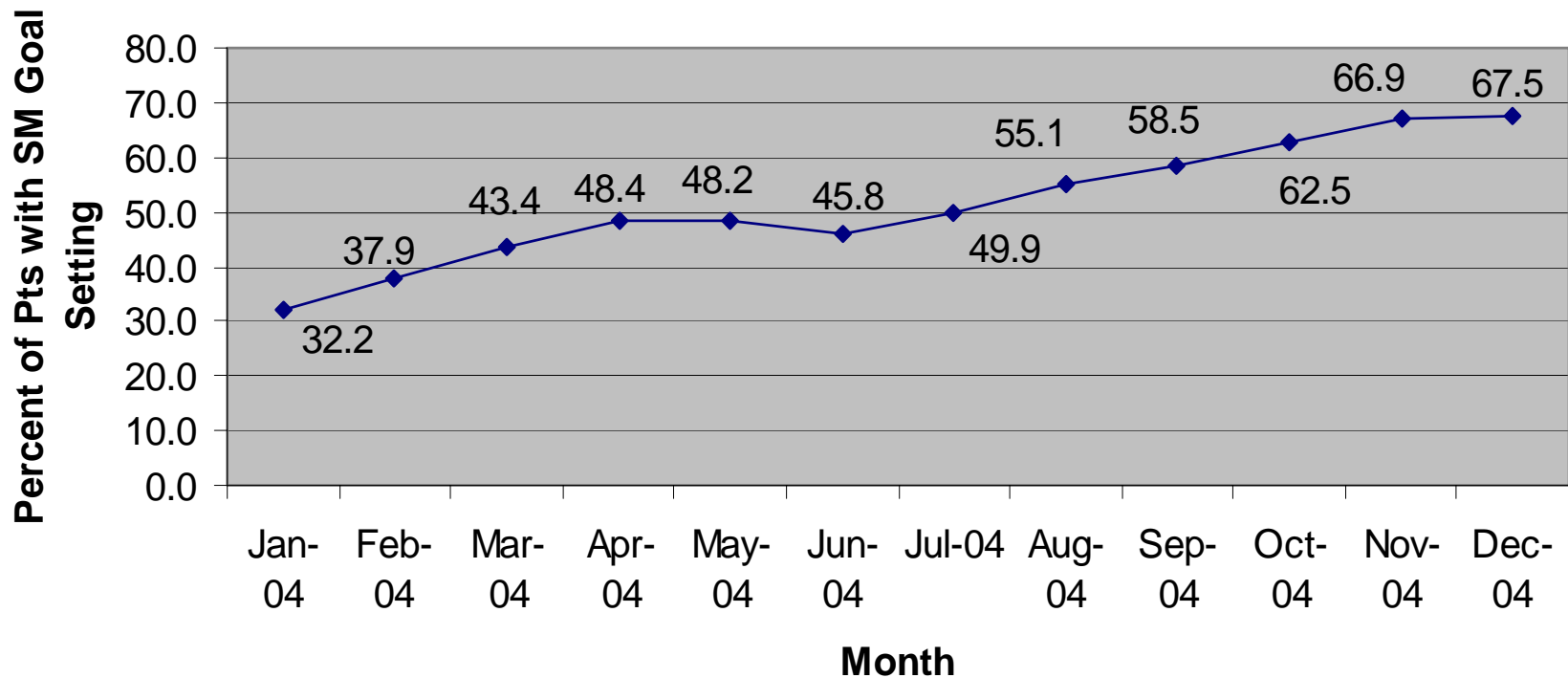
Percent of Pts with Fasting LDL



% w/Self Management Goal Setting



Percent of Pts with SM Goal Setting





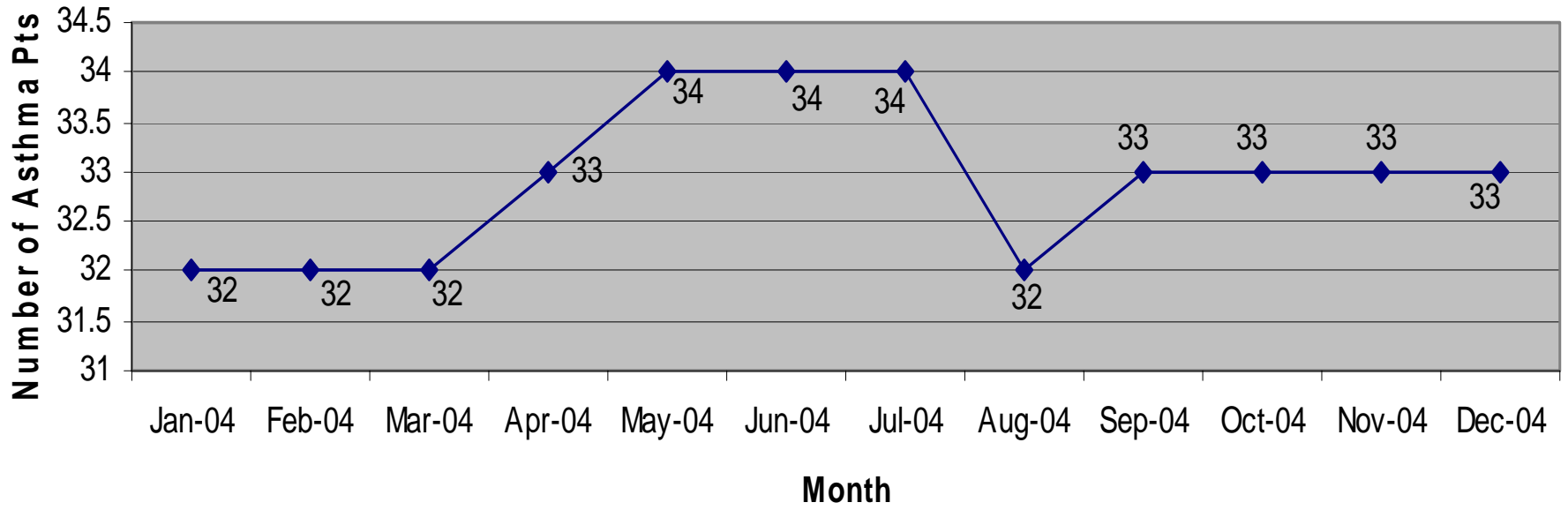
ASTHMA: South Dakota

Total Number Health Centers and Sites

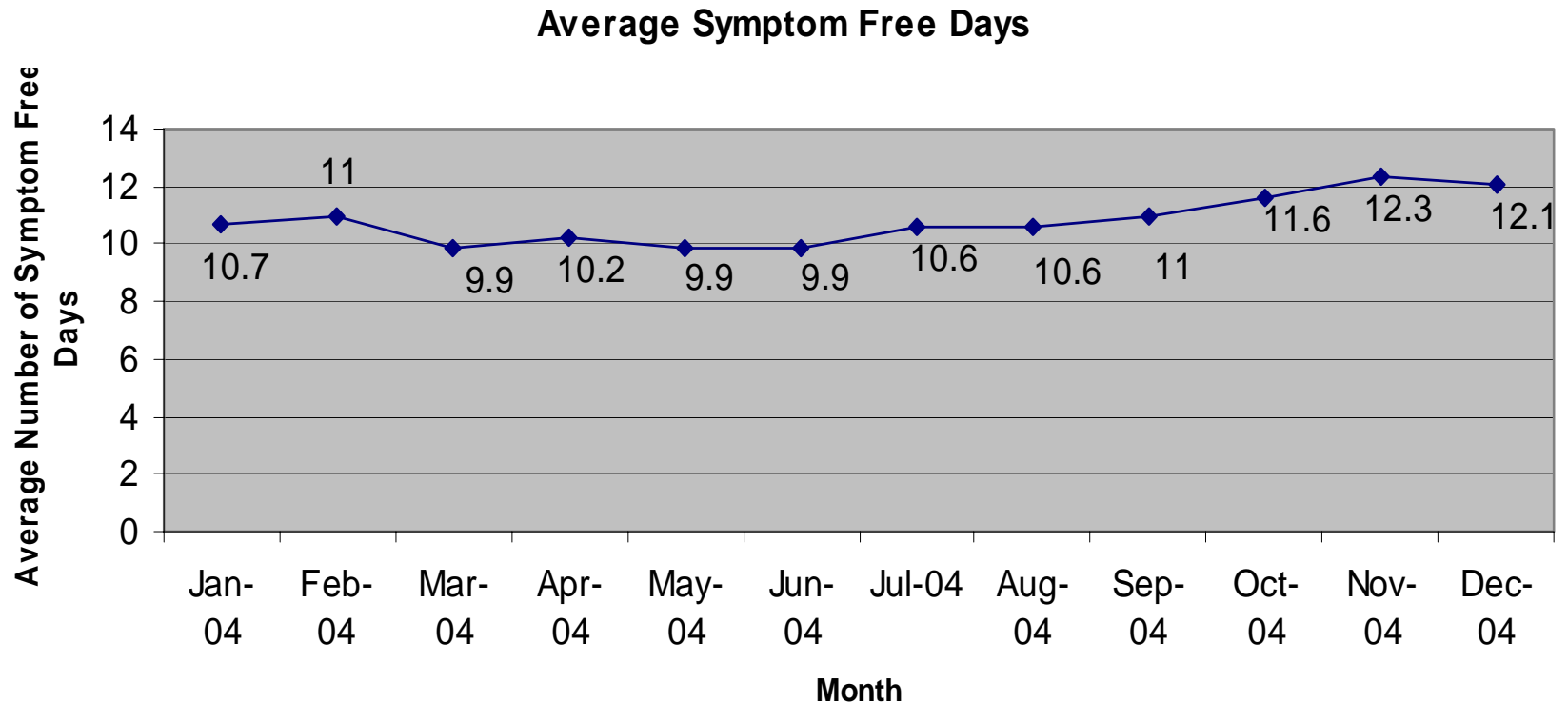
- Prairie CHC (1)

Registry Size

Total Number Asthma Pts in Registry



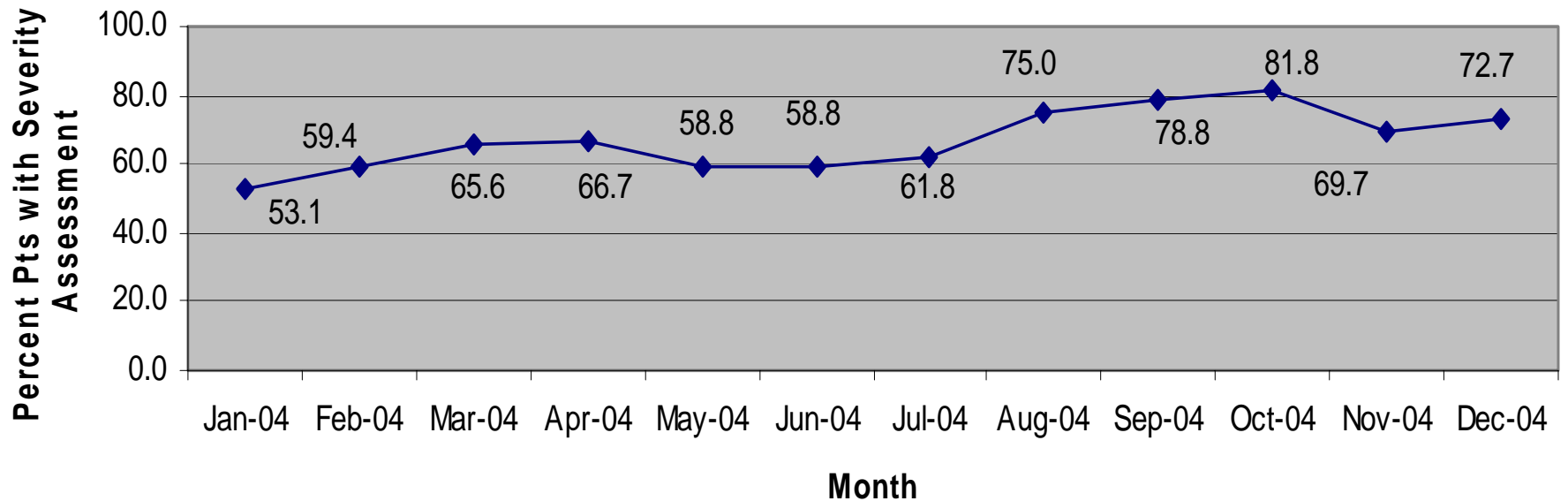
Average Symptom Free Days in last 14 days



% Patients with Severity Assessment



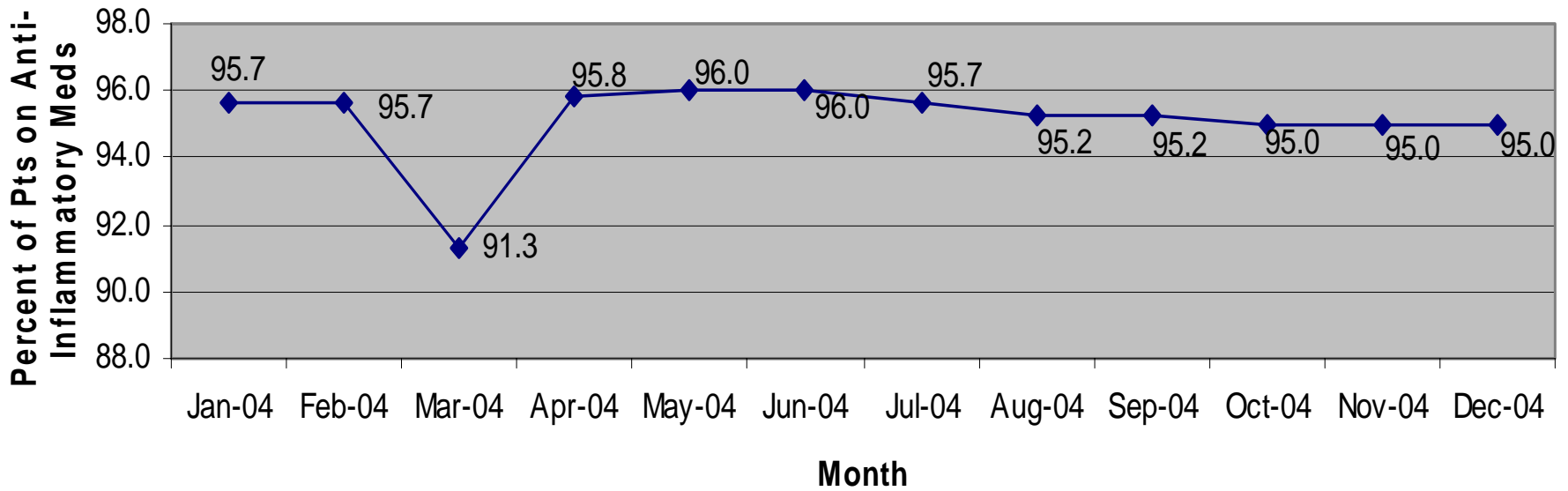
Percent of Asthma Pts with Severity Assessment



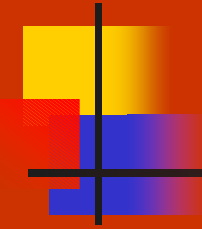
% prescribed Anti-Inflammatory Medication



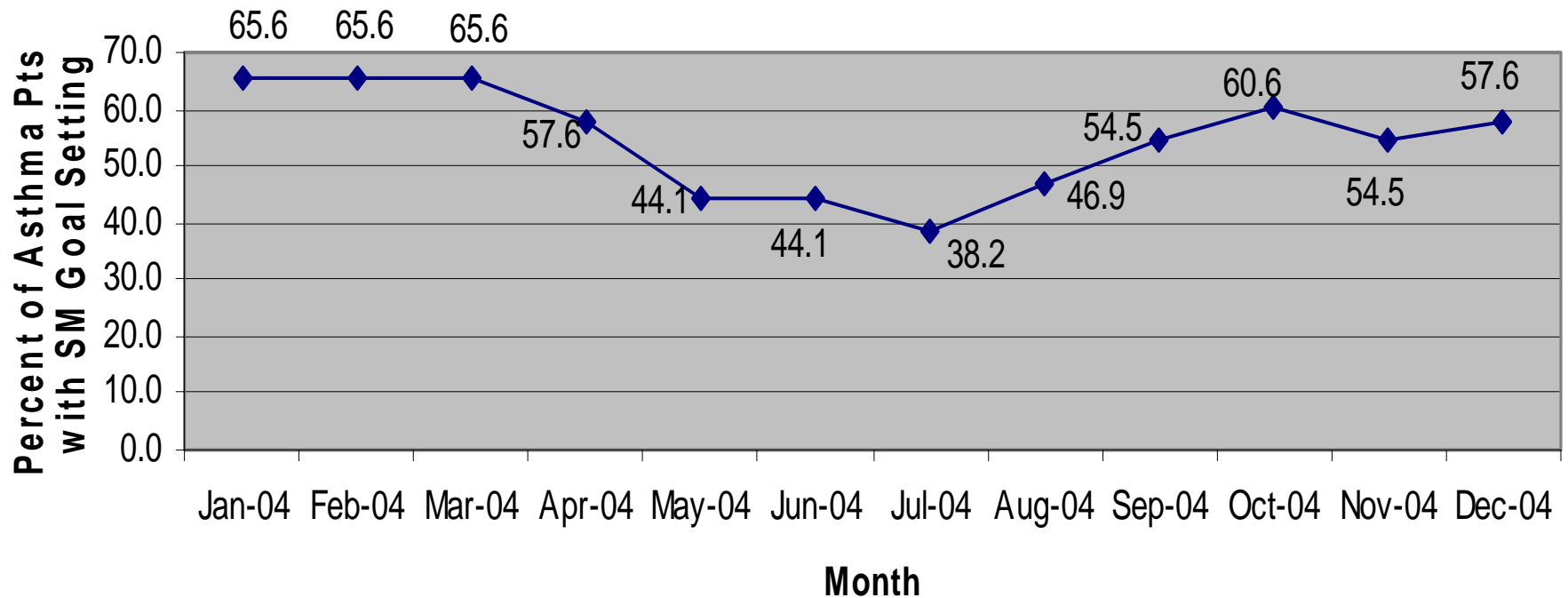
Percent of Asthma Pts on Anti-Inflammatory Meds



% w/Self Management Goal Setting



Percent of Asthma Pts with SM Goal Setting



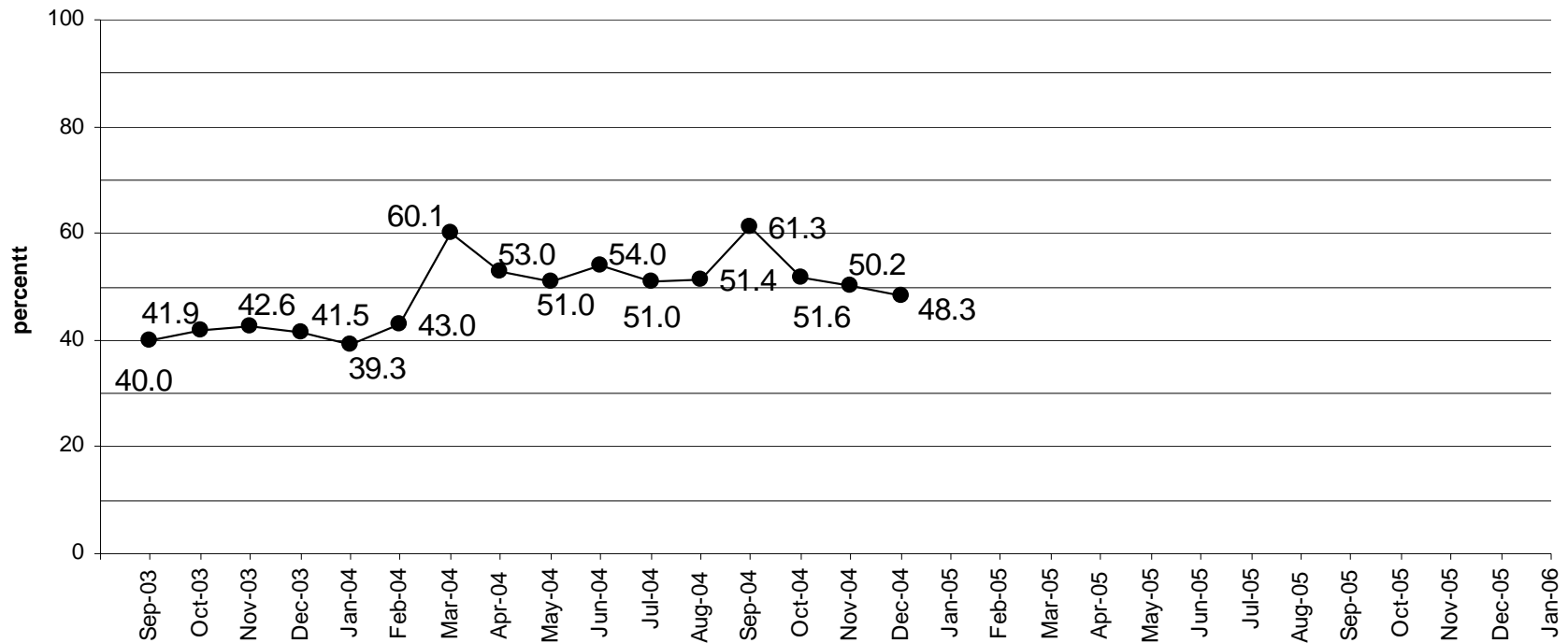


CANCER: South Dakota

- Total Number Health Centers and Sites
 - Rural CHC (3)

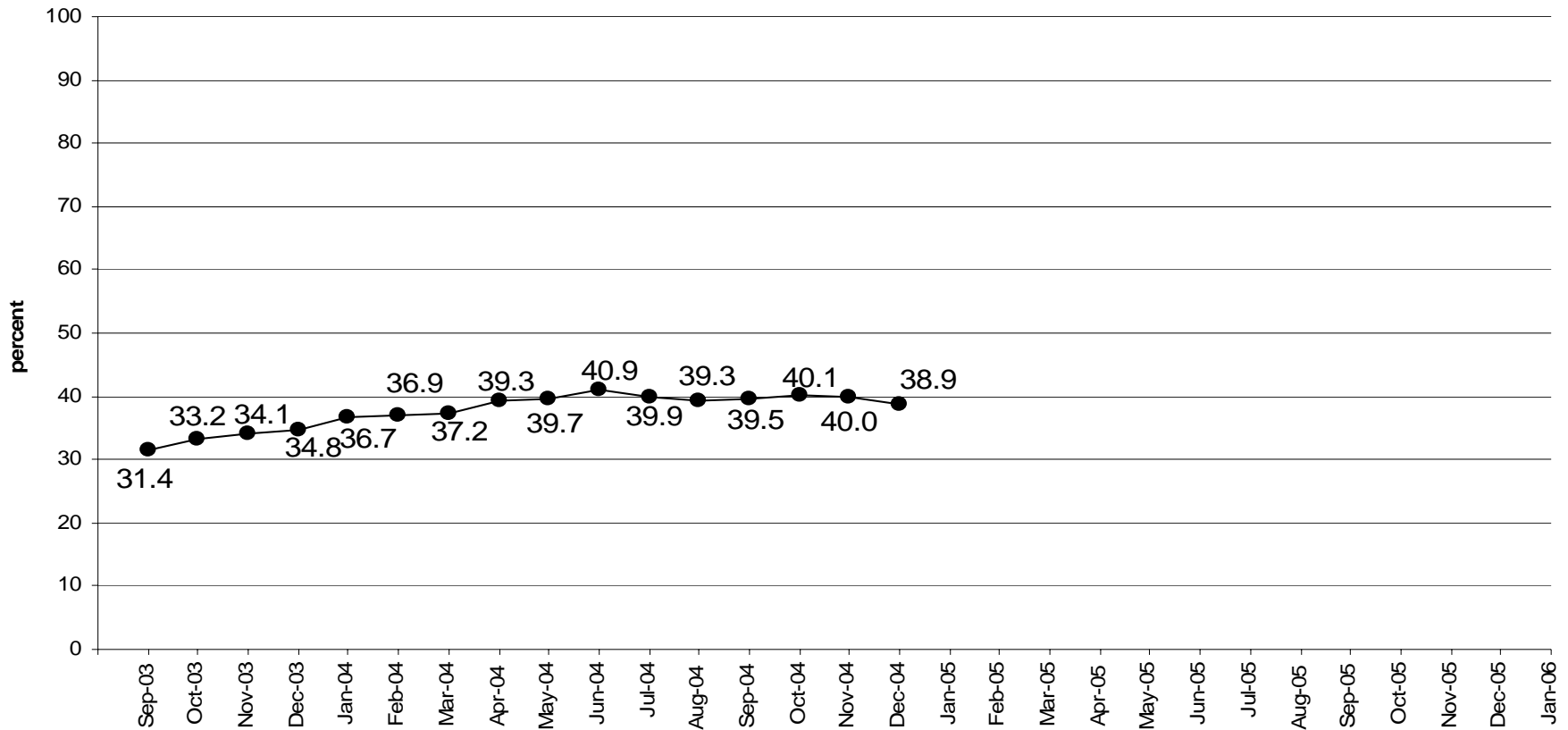
% ♀ >42 with Mammogram (last 2 years)

Percent of Women (age ≥ 42) with Mammogram within Last 2 Years



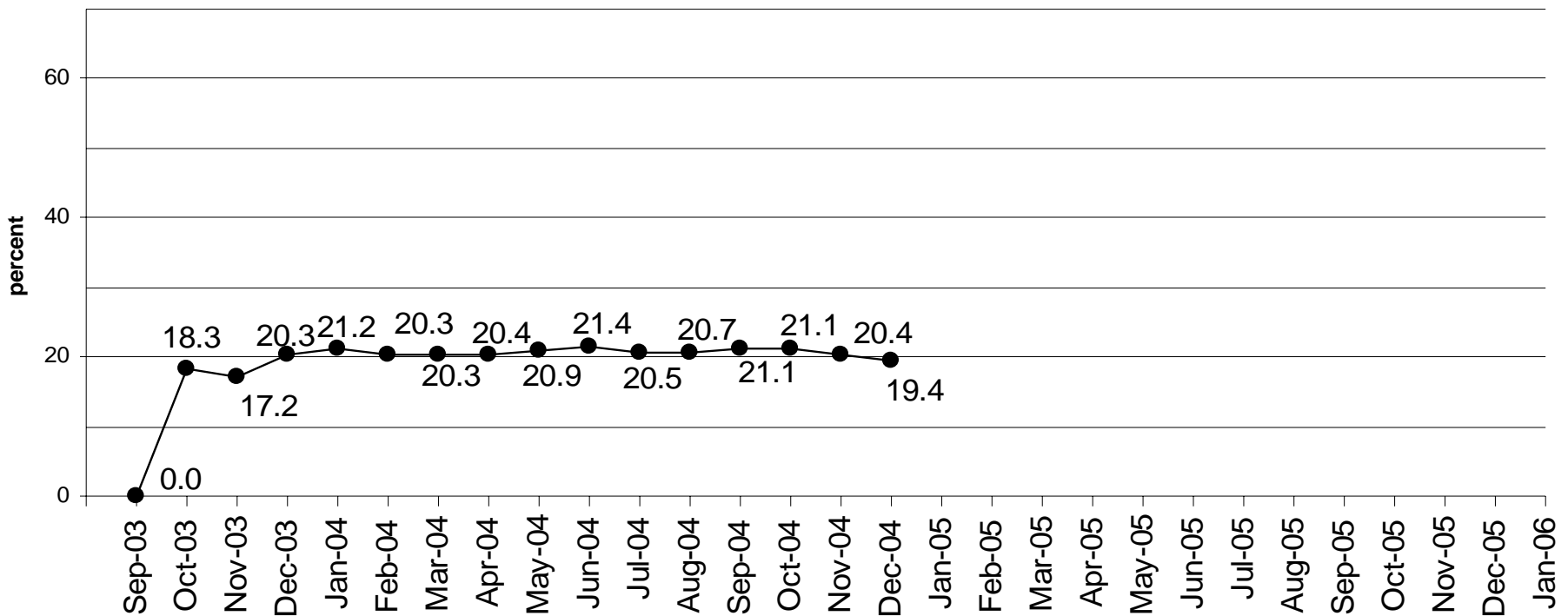
♀ >21 with Pap Smear (last 3 years)

Percent of Women (age ≥ 21) with Pap Smear within Last 3 Years

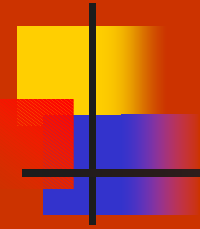


Adults ≥ 51 with Colon CA Screening

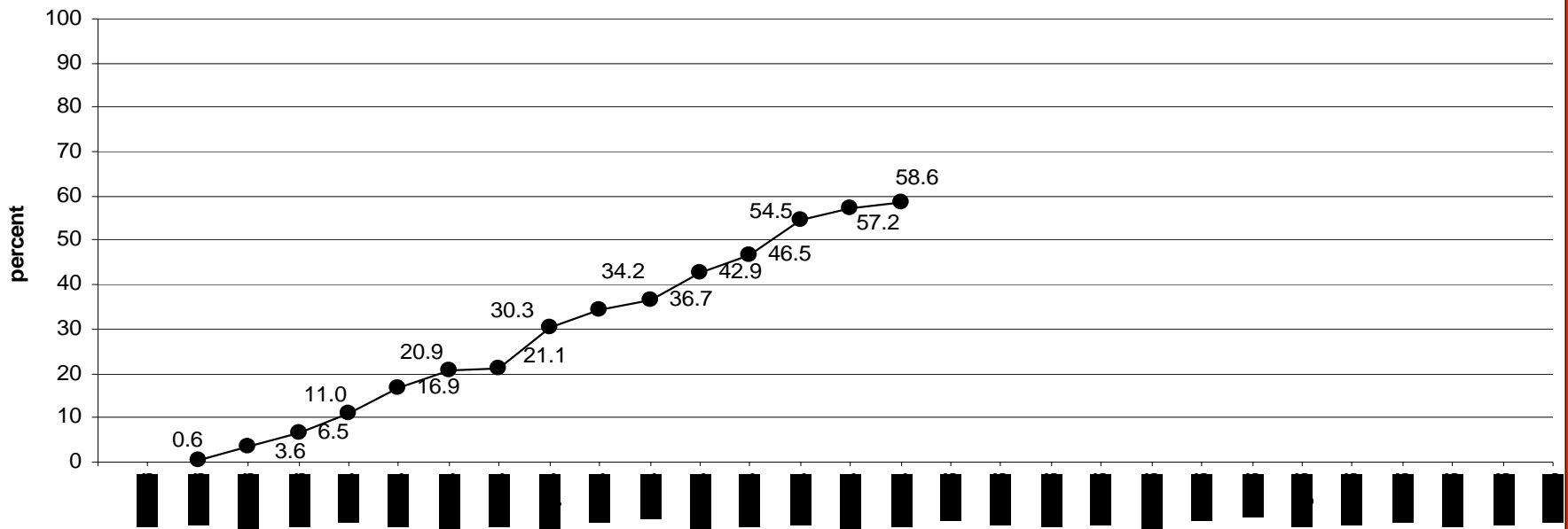
Percent of Adults with Colorectal Cancer Screening (Time Appropriate)



% Patients w/ Self-Management Goal Setting



Percent of Patients with Self-Management Goal Setting

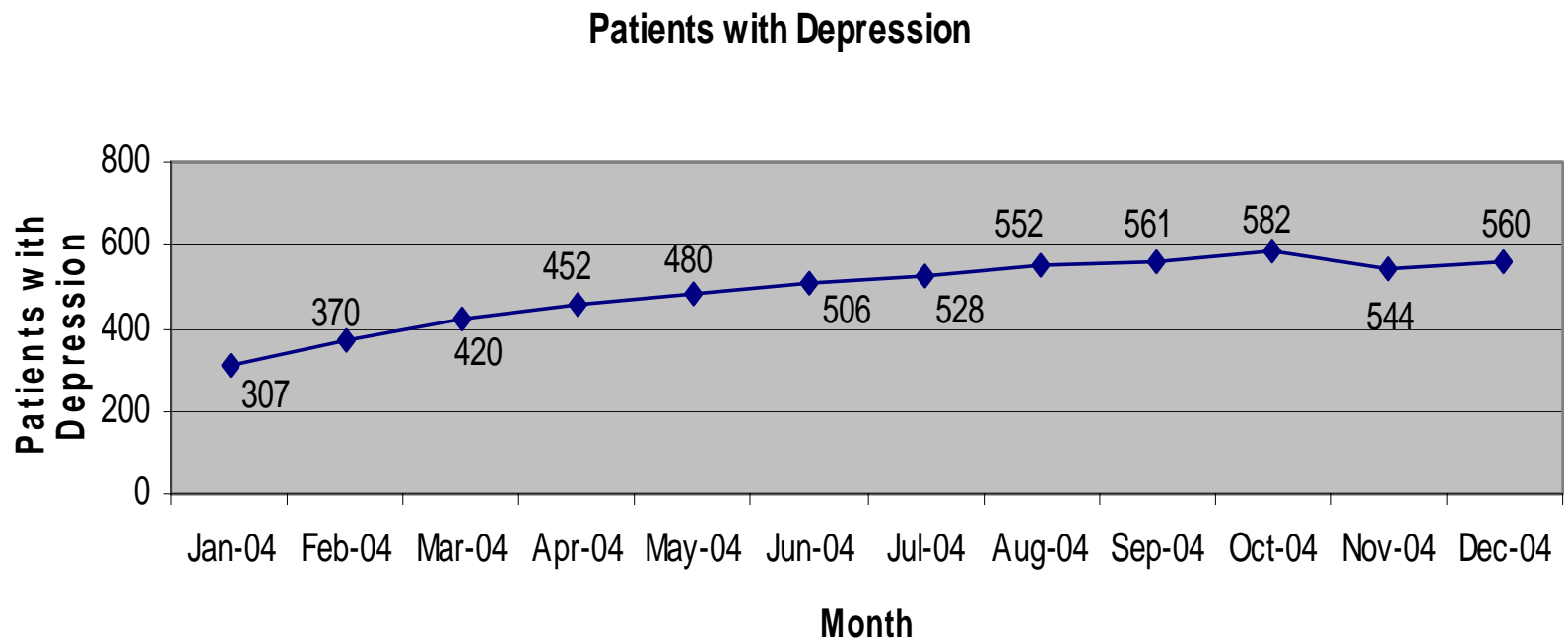




Depression: South Dakota

- Total number Health Centers and Sites
 - Sioux River Valley (1)

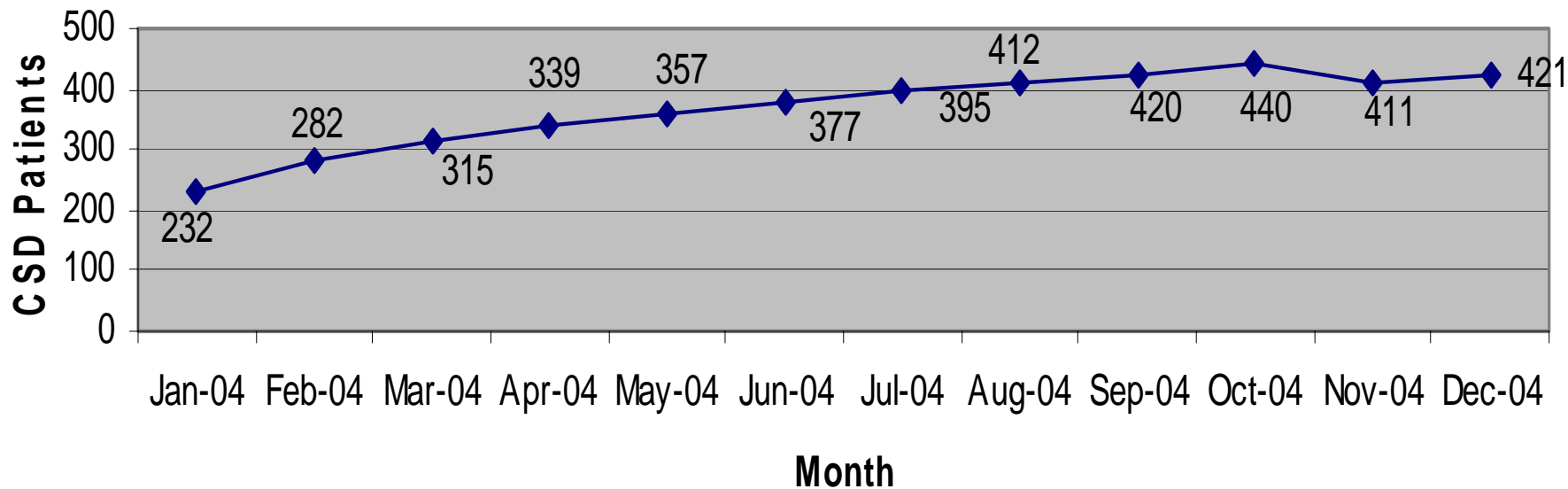
Patients with Depression



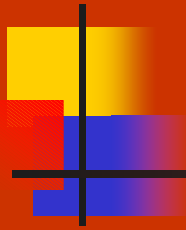
Patients with CSD (PHQ > 10)



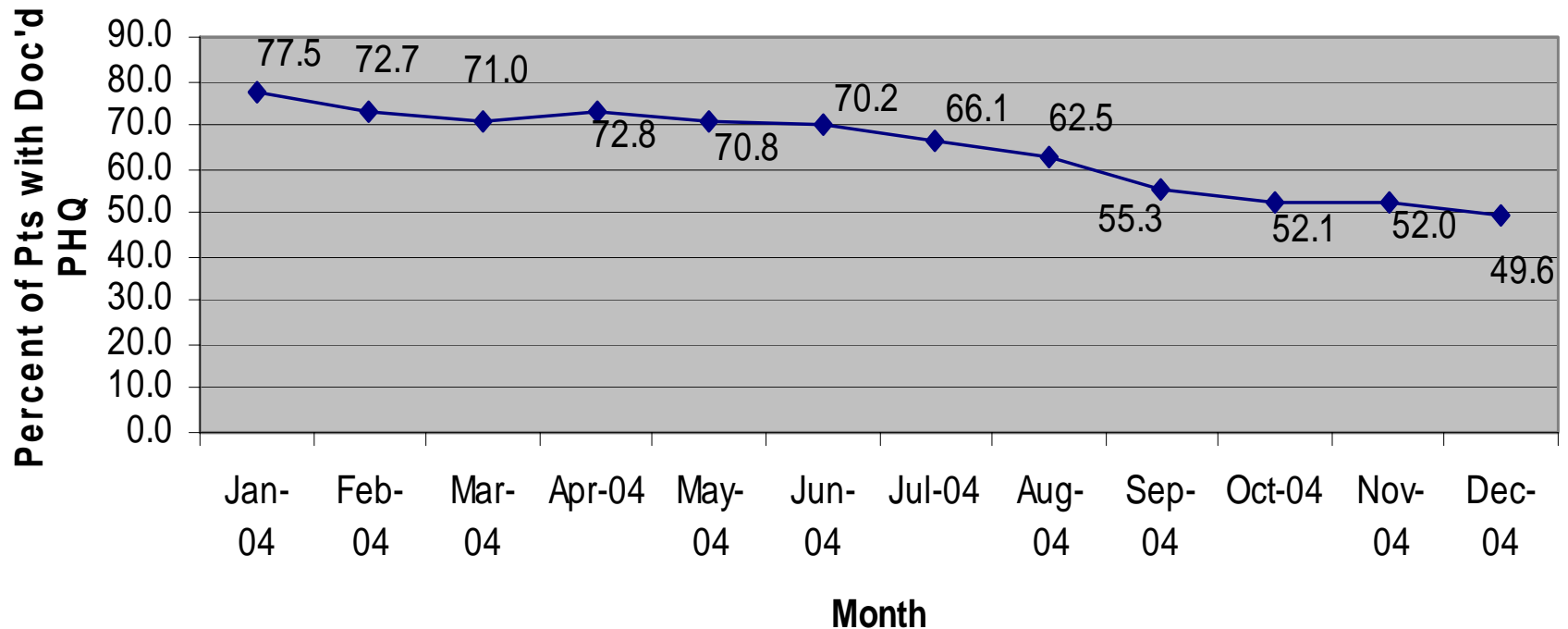
CSD Patients



% Patients with Documented PHQ Score



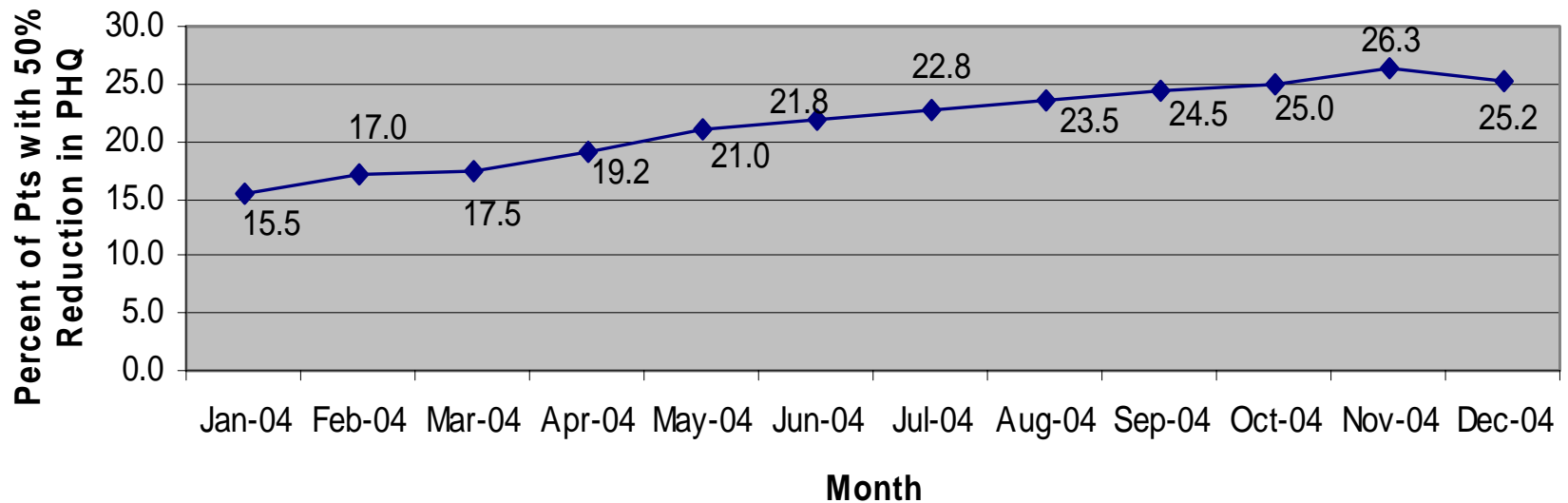
Percent of Pts with Documented PHQ



% CSD Patients with 50% Reduction in PHQ

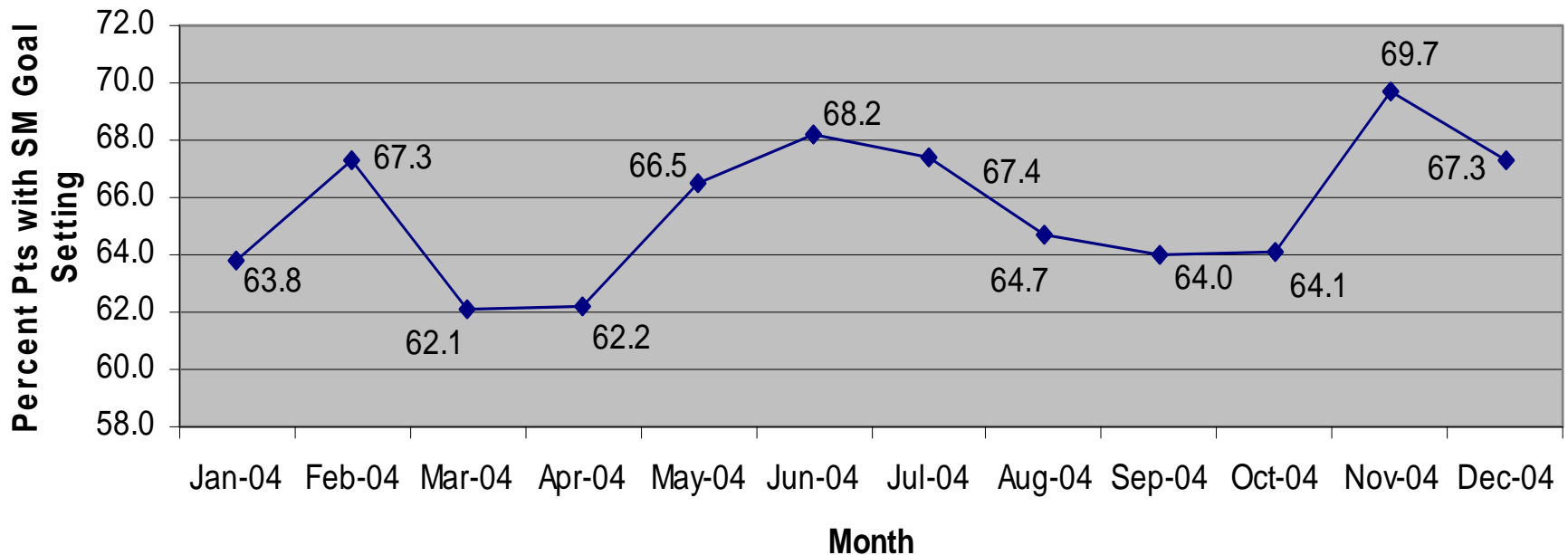


Percent of Pts with 50% Reduction in PHQ



% w/Self Management Goal Setting

Percent Pts with SM Goal Setting



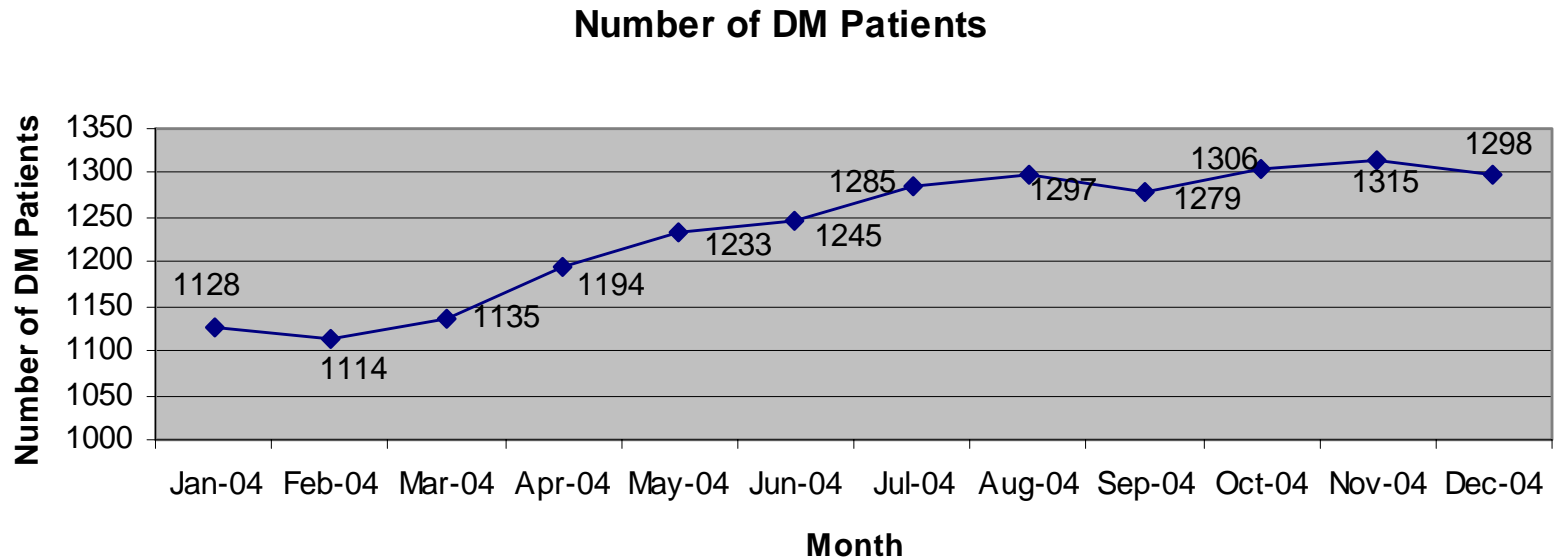


DIABETES: Montana

Total number Health Centers and Sites:

- Glacier (1)
- Butte CHC (3)
- Sweet (1)
- Community Health Partners (2)
- Lincoln (1)
- Cooperative Health (2)
- Deering CHC (1)
- MT. Migrant (3)
- Partnership Health Center (2)

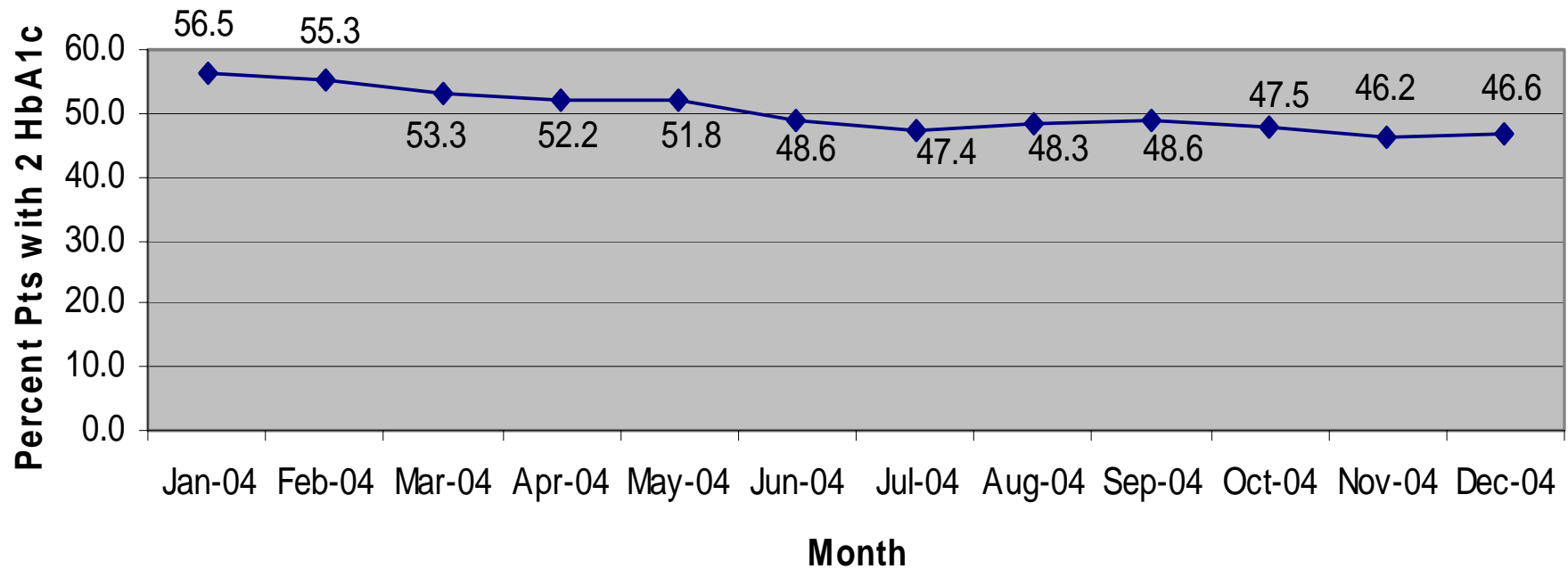
Registry Size



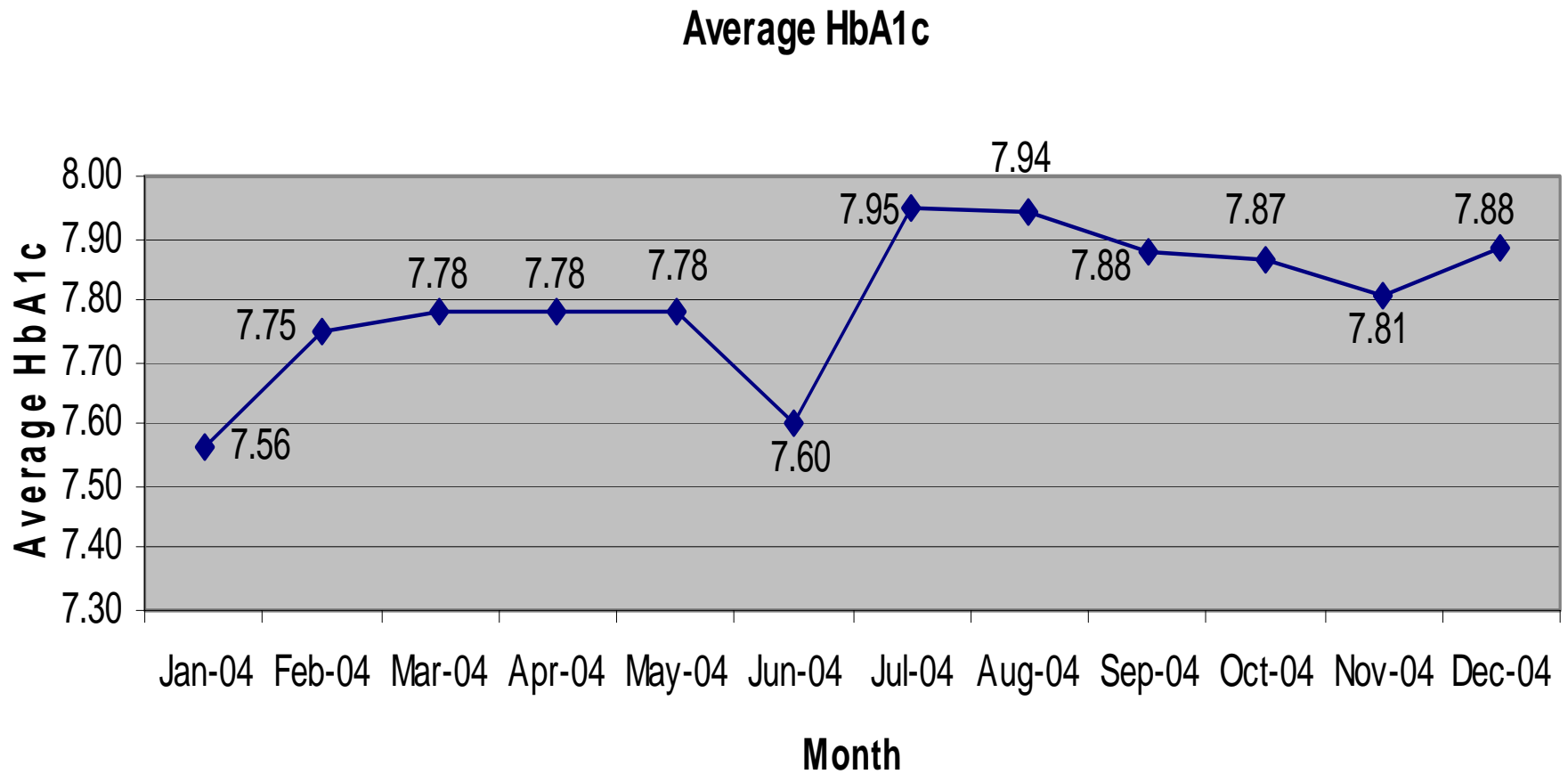
% Patients w/2 HbA1c in the last year



Percent Pts with 2 HbA1c

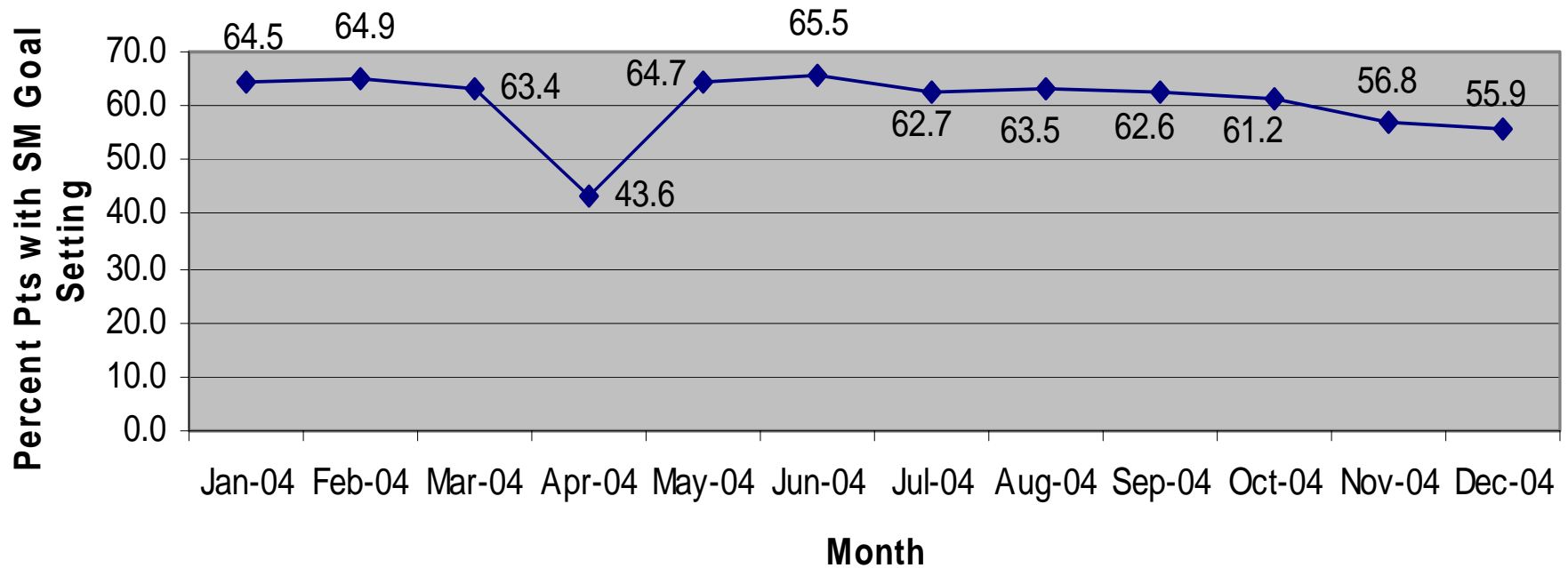


Average HbA1c



% Pts w/ Self Management Goal Setting

Percent Pts with SM Goal Setting



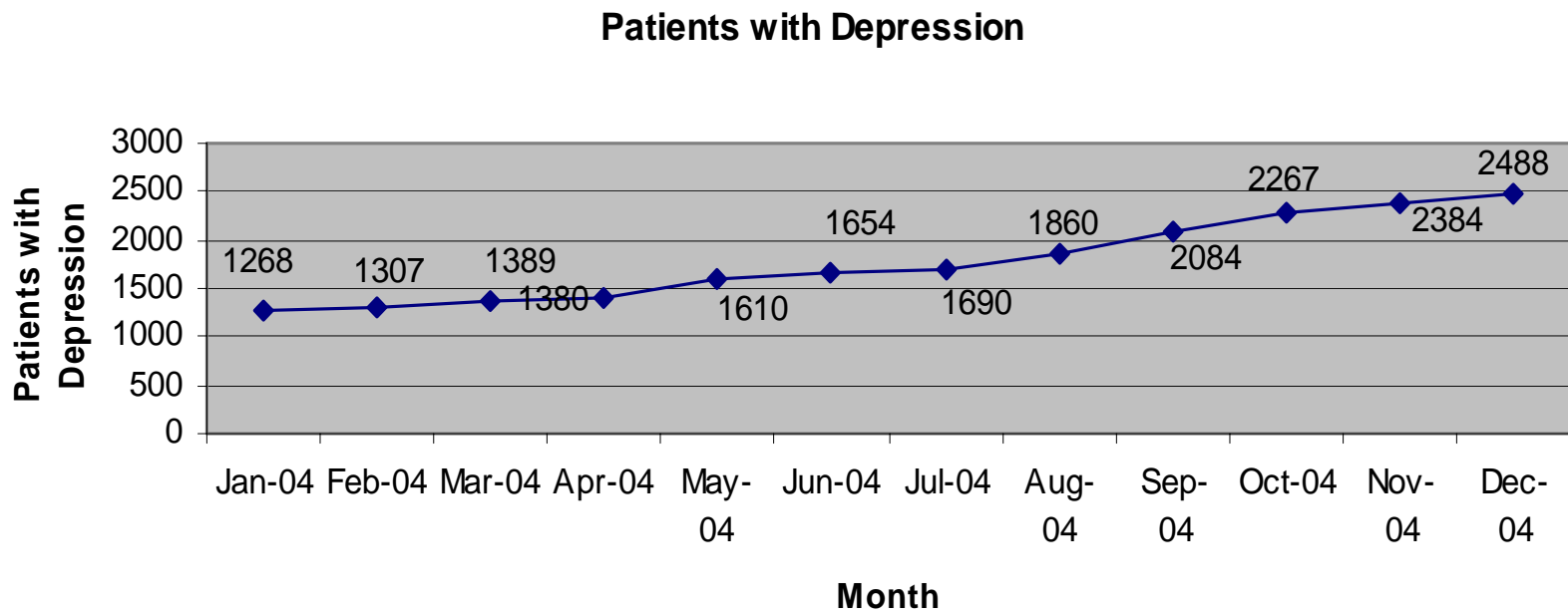


Depression: Montana

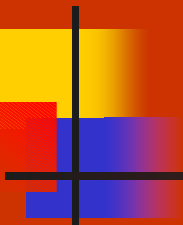
Total number Health Centers and Sites

- Butte CHC (2)
- Community Health Partners (1)
- Great Falls CHC (1)
- Cooperative Health Center (1)

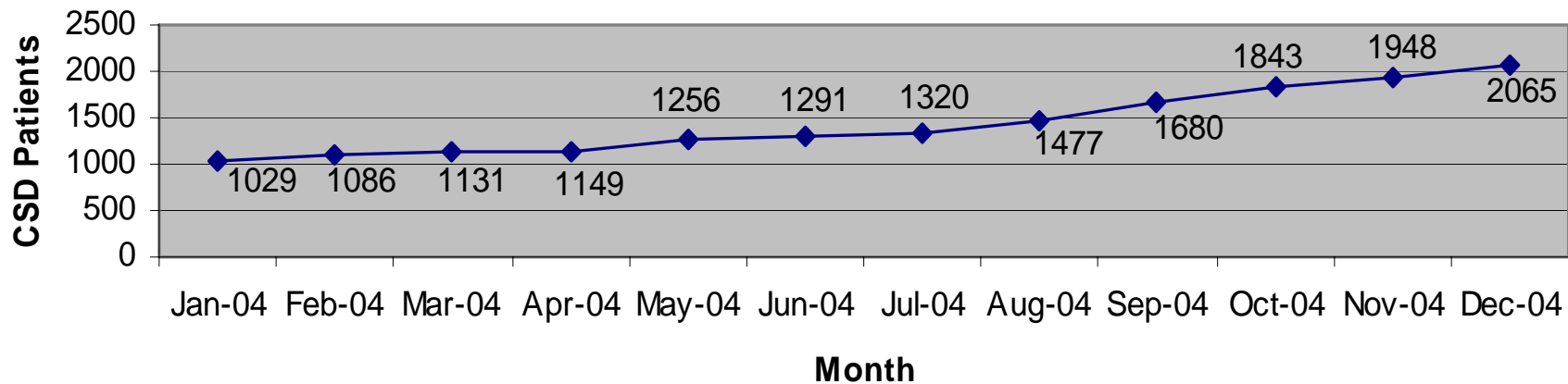
Patients with Depression



Patients with CSD (PHQ score > 10)



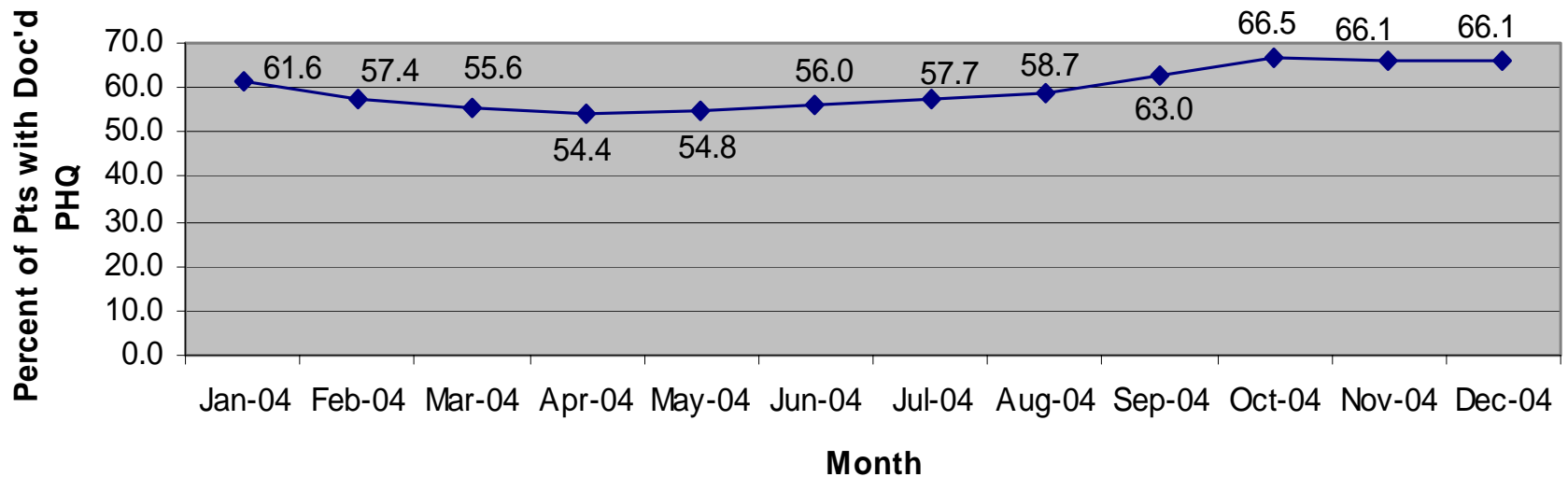
CSD Patients



% Patients with Documented PHQ Score

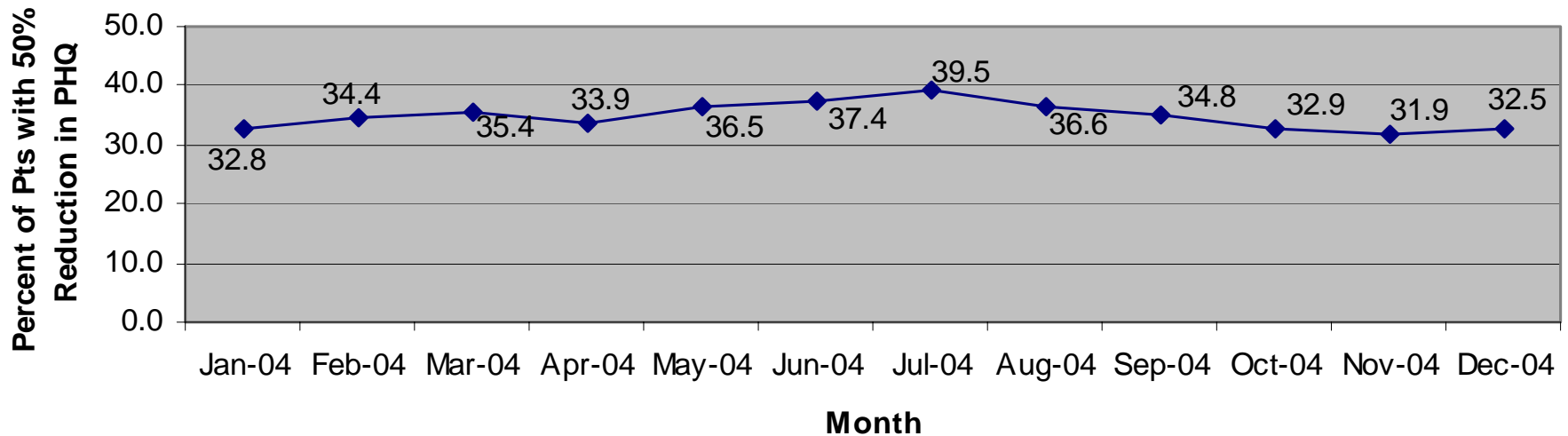


Percent of CSD Pts with Documented PHQ



% CSD Patients with 50% Reduction in PHQ

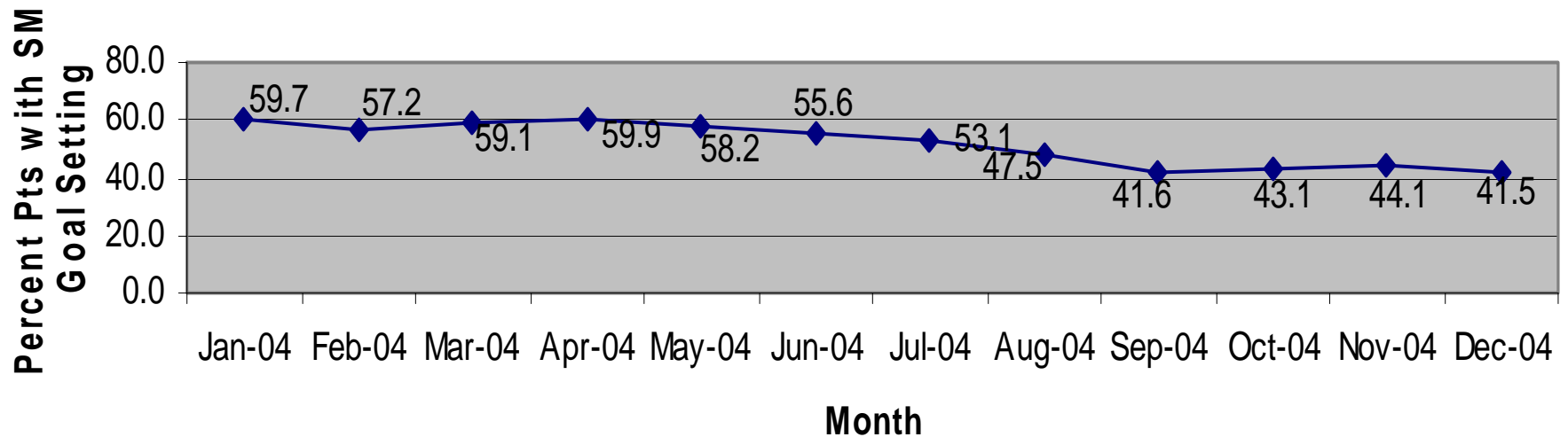
Percent of Pts with 50% Reduction in PHQ



% w/Self Management Goal Setting



Percent Pts with SM Goal Setting

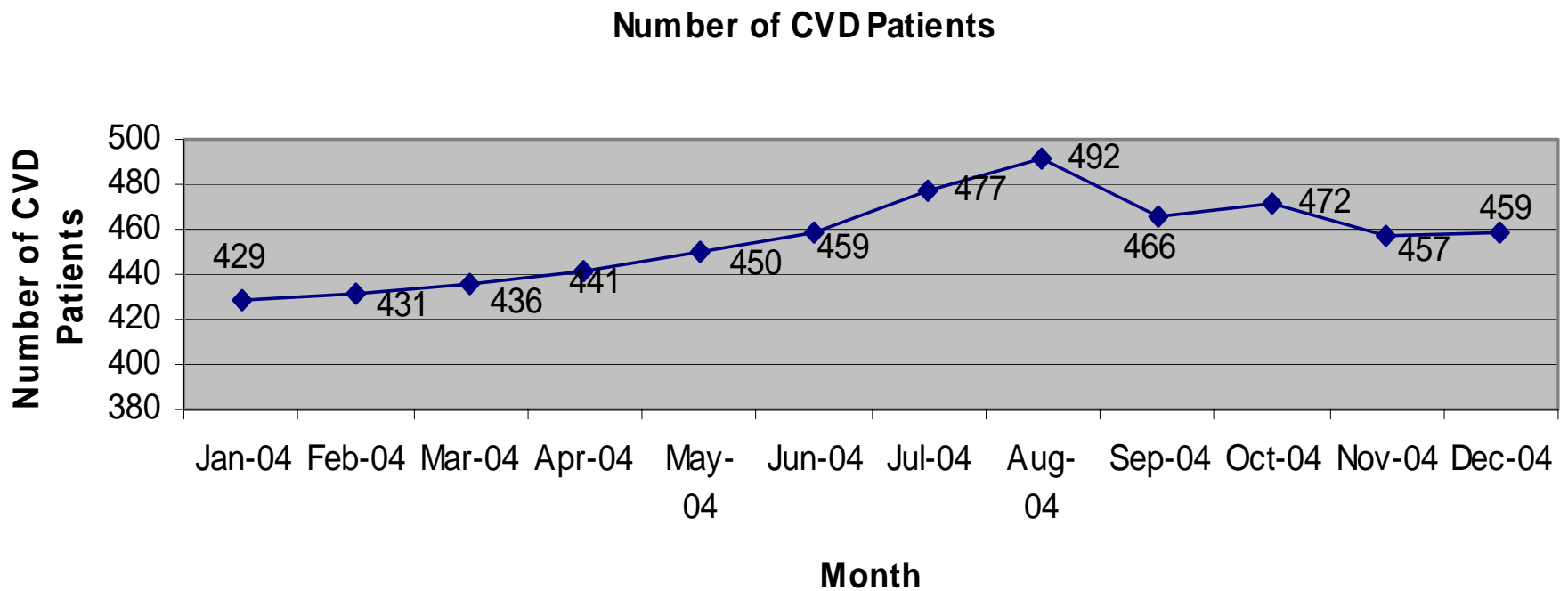




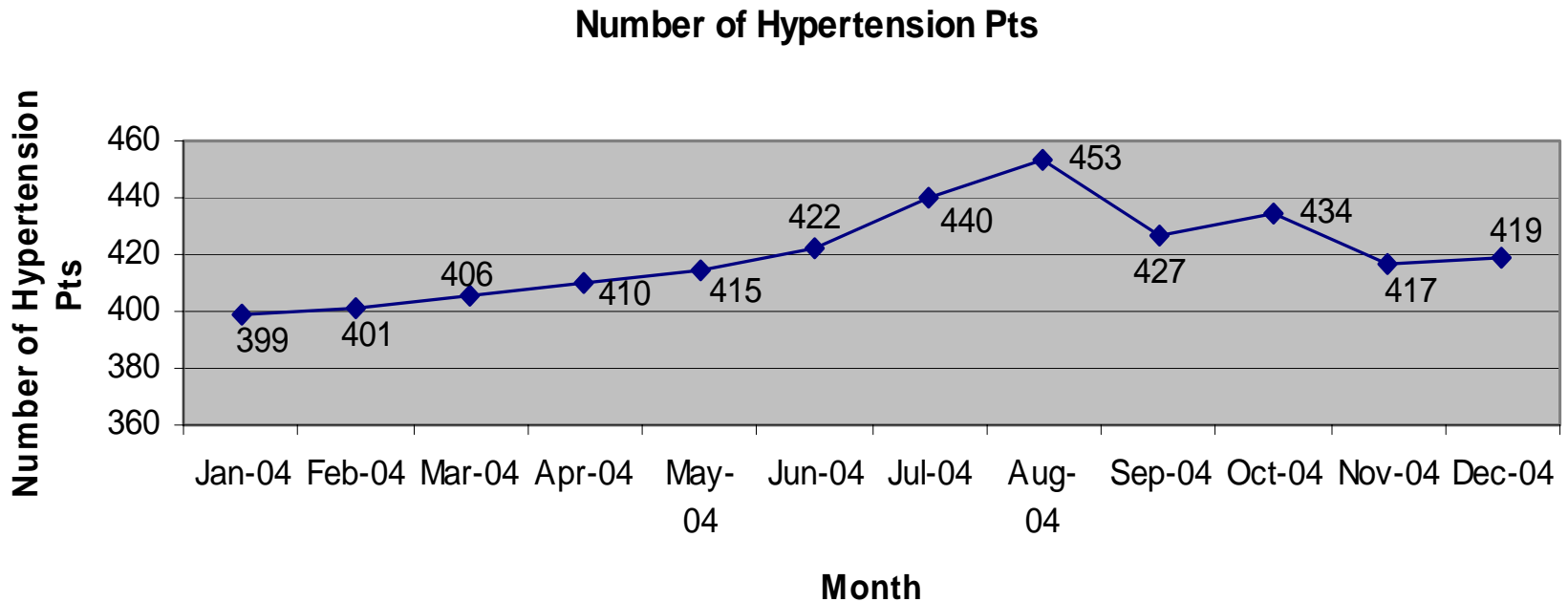
CARDIOVASCULAR: Montana

- Total Number Health Centers and Sites
 - Community Health Partners (1)
 - Montana Migrant (3)

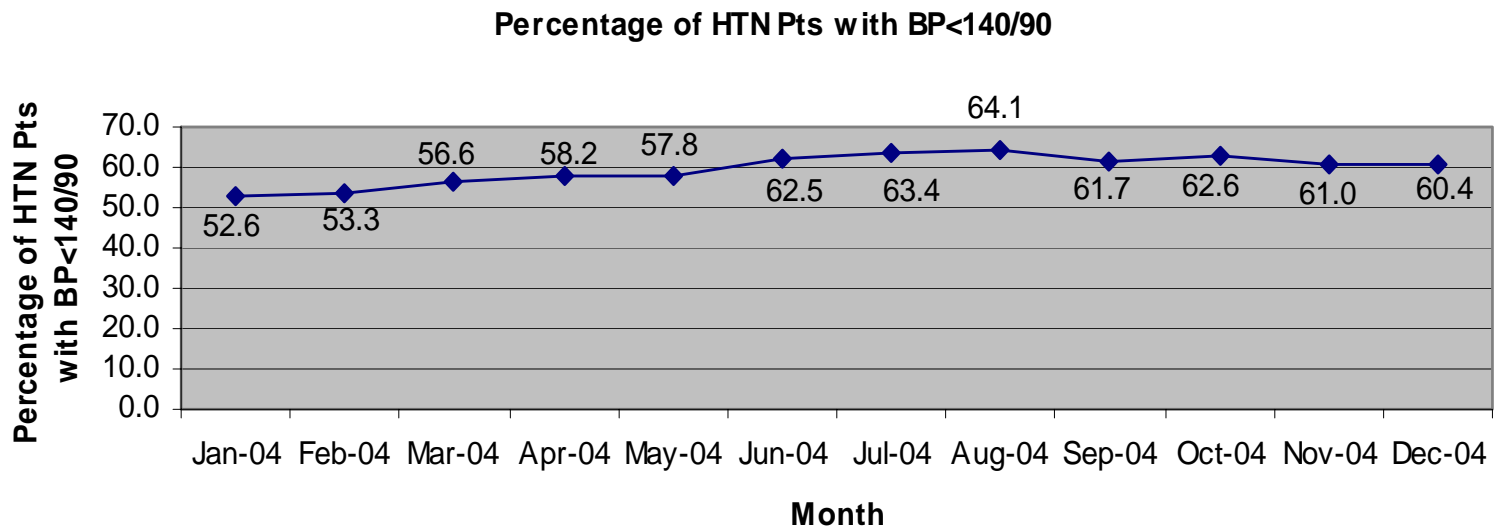
Registry Size # Pts with CVD



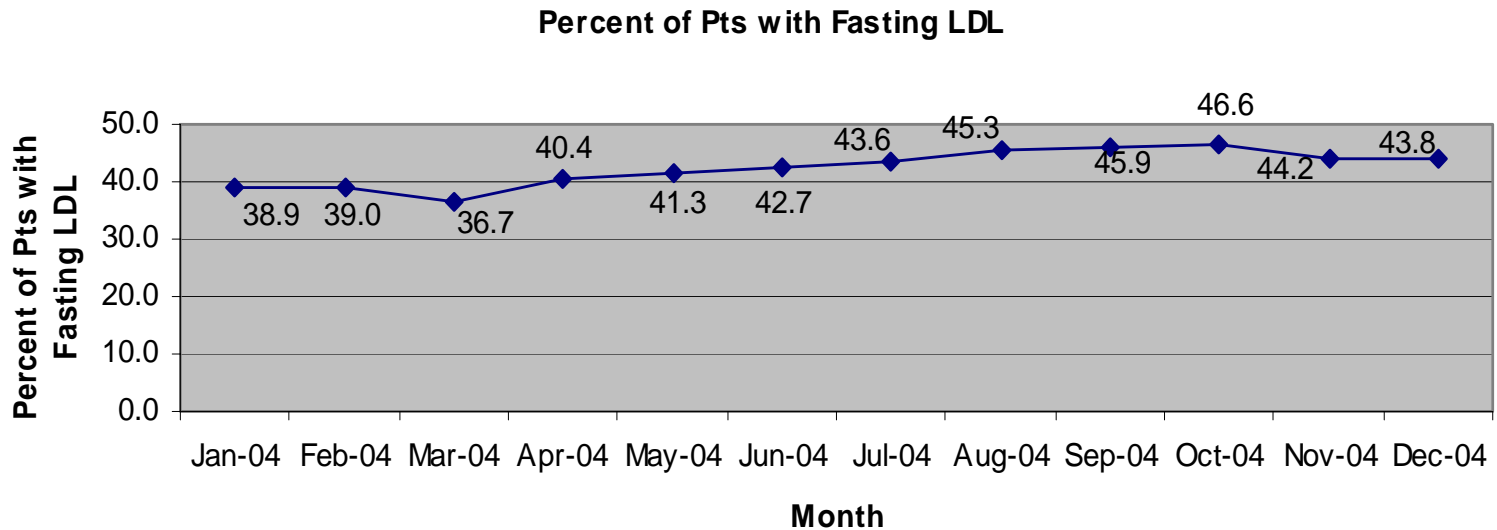
Registry Size # Pts with HTN



% w/Blood Pressure < 140/90

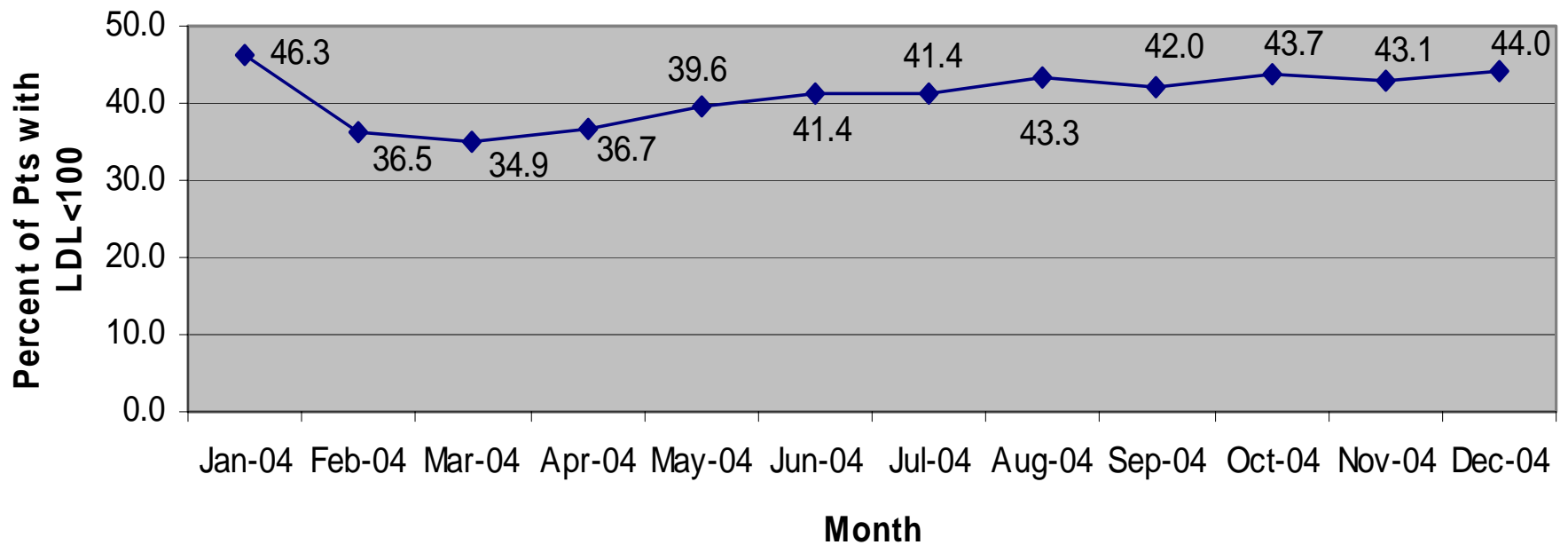


Patients with Fasting LDL



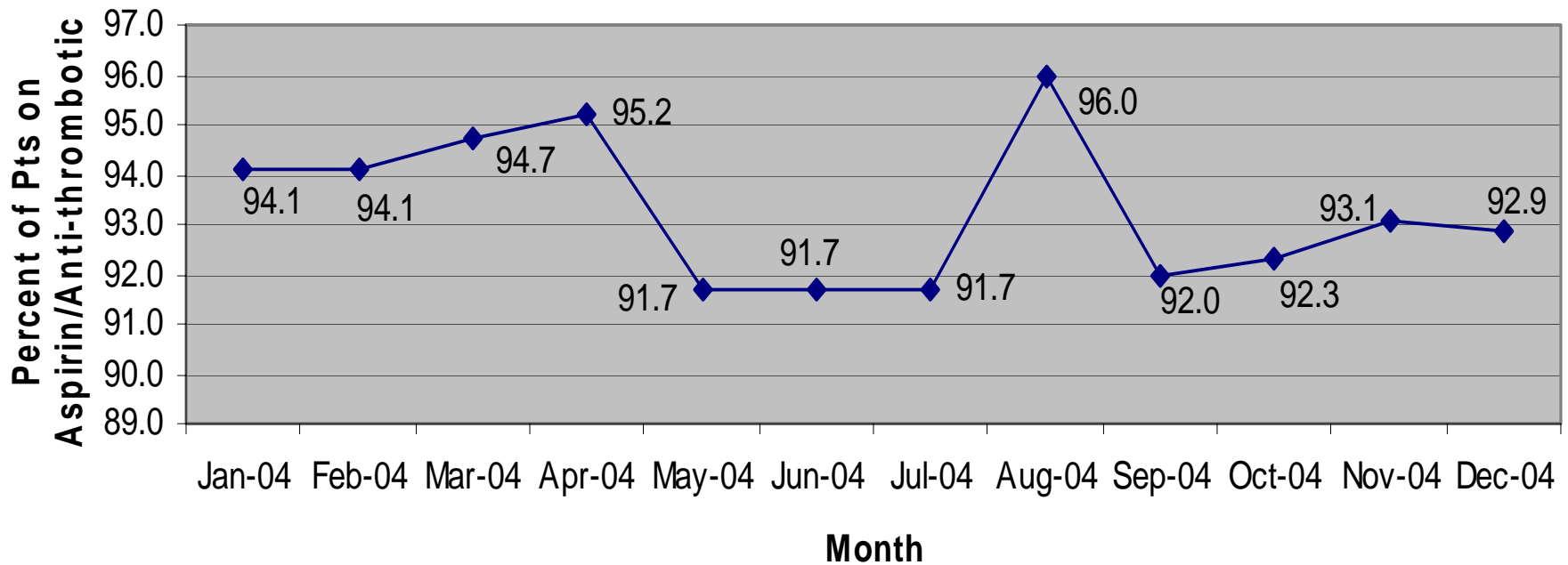
Patients LDL < 100

Percent of Pts with LDL<100



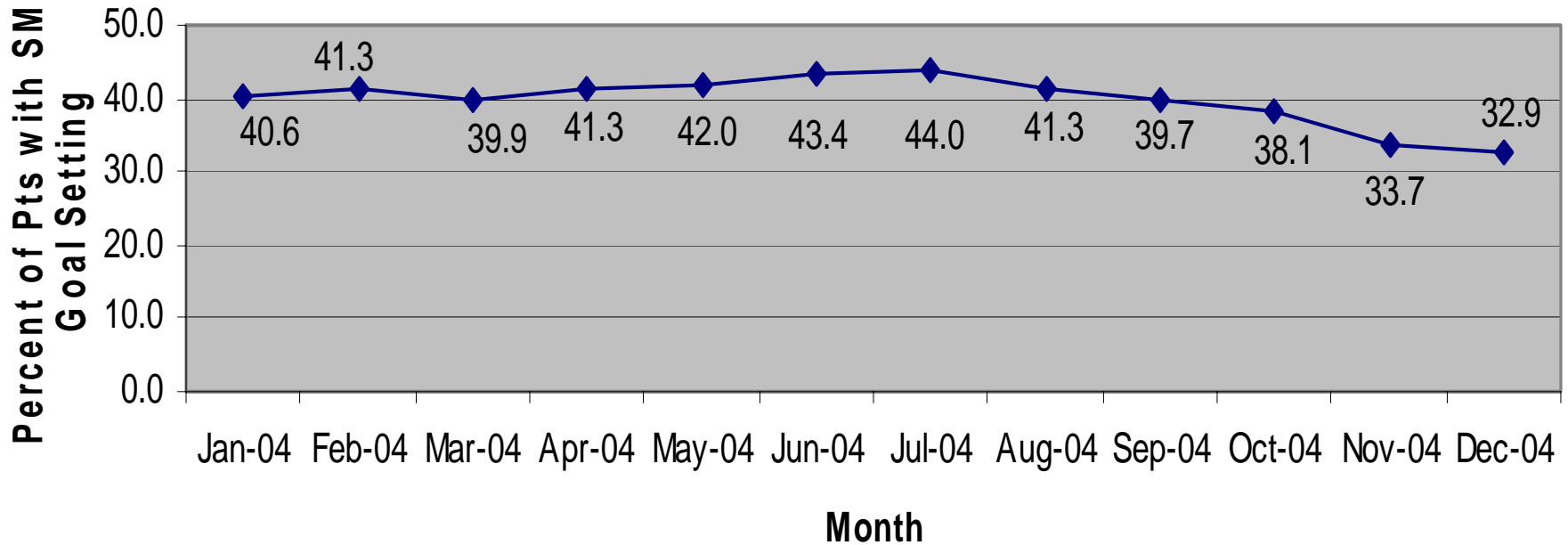
Patients on ASA or Antithrombotic

Percent of Pts on Aspirin/Anti-thrombotic



% w/Self Management Goal Setting

Percent of Pts with SM Goal Setting





DIABETES: New Mexico

Total number Health Centers and Sites:

Ben Archer (5)

La Clinica de Familia (7)

La Casa (4)

Presbyterian (1)

Mora(1)

Pecos Valley(1)

HCNM (7)

La Clinica del Pueblo de Rio Arriba (1)

First Choice (1)

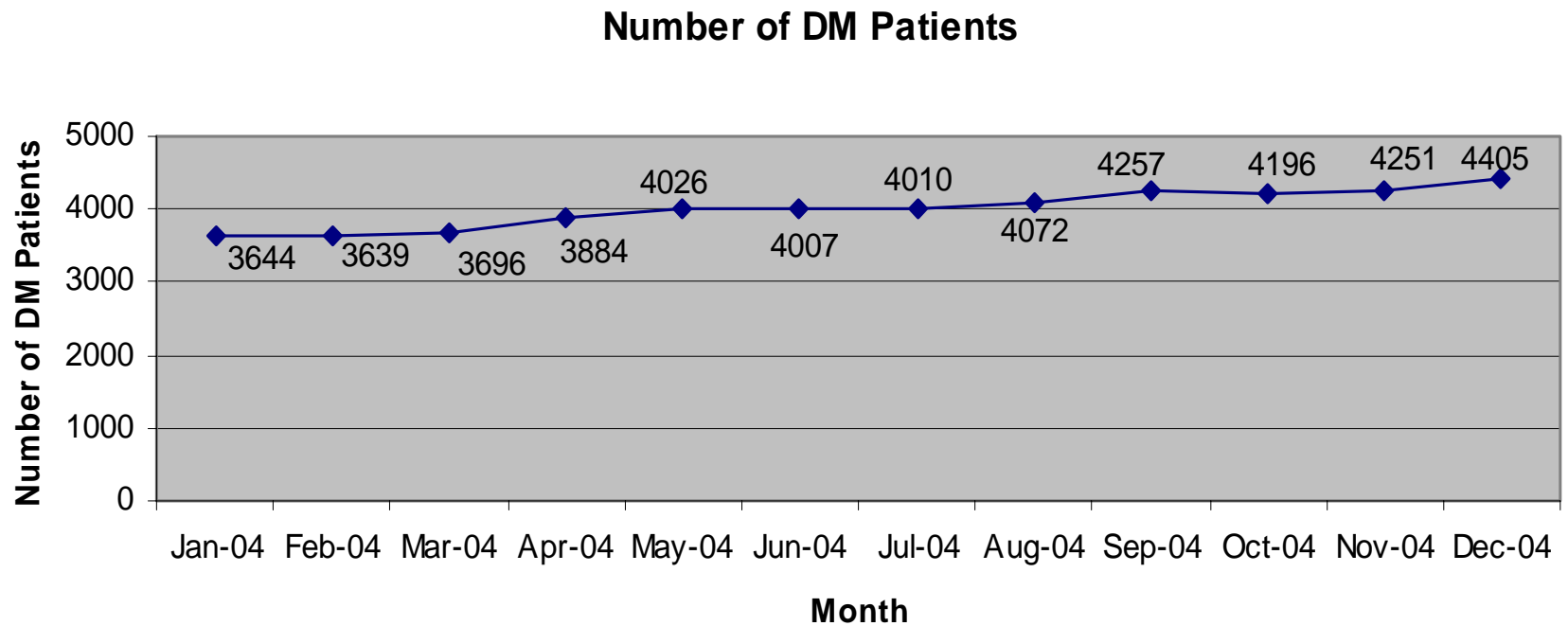
De Baca (1)

Hidalgo (3)

La Familia (1)

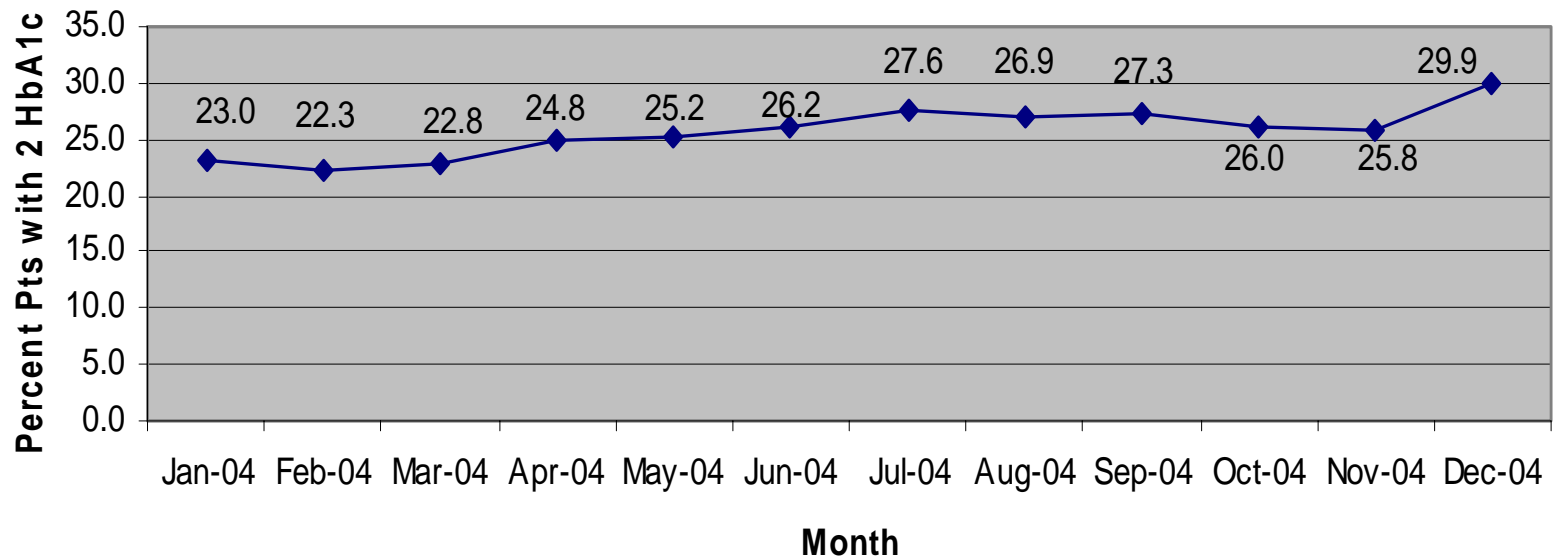
Las Clinicas del
Norte (3)

Registry Size

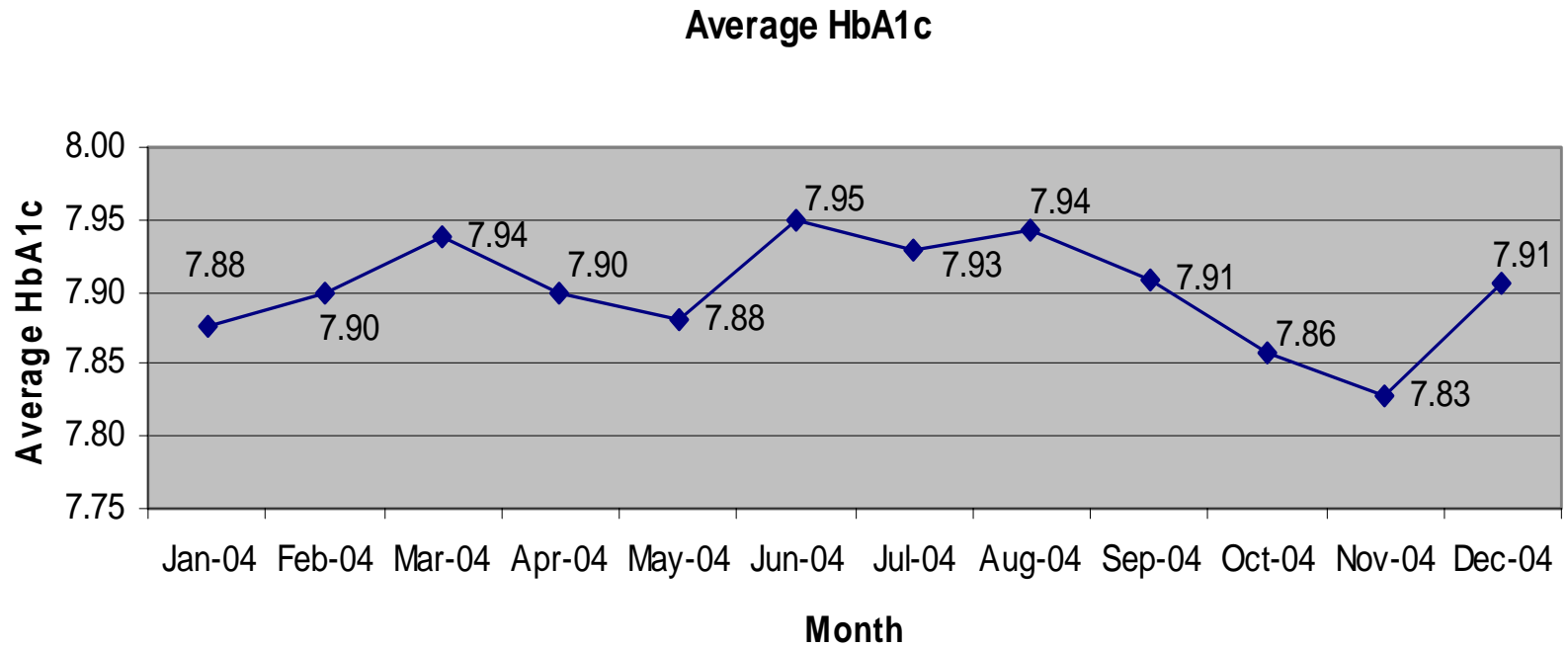


% Patients w/2 HbA1c in the last year

Percent Pts with 2 HbA1c

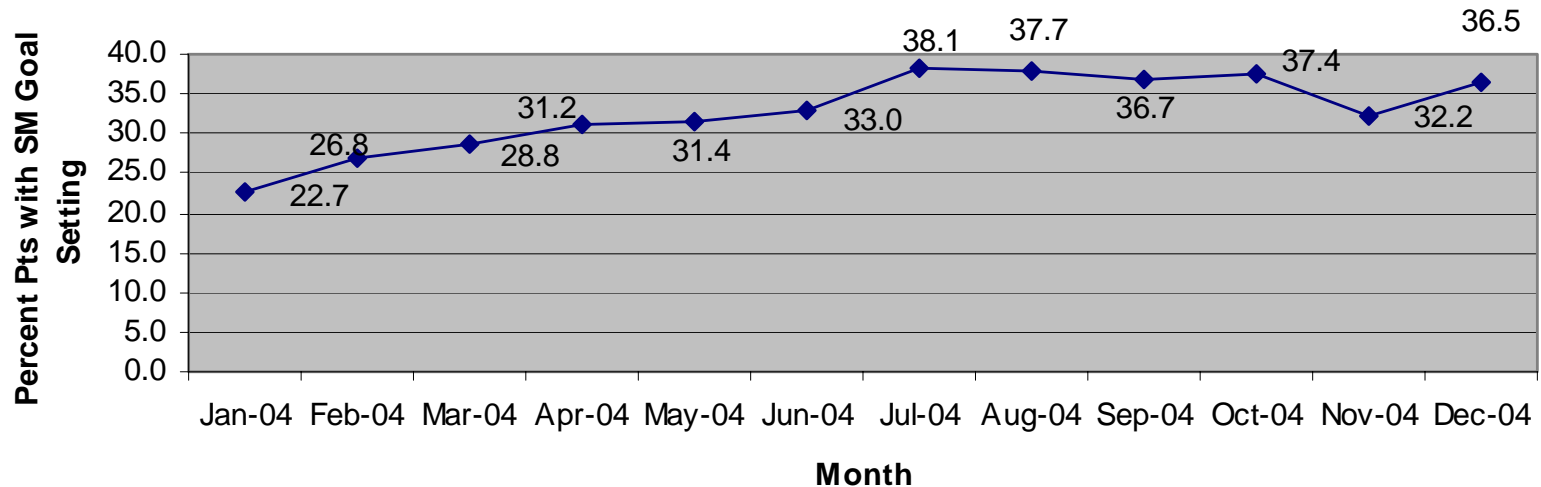


Average HbA1c



% w/Self Management Goal Setting

Percent Pts with SM Goal Setting





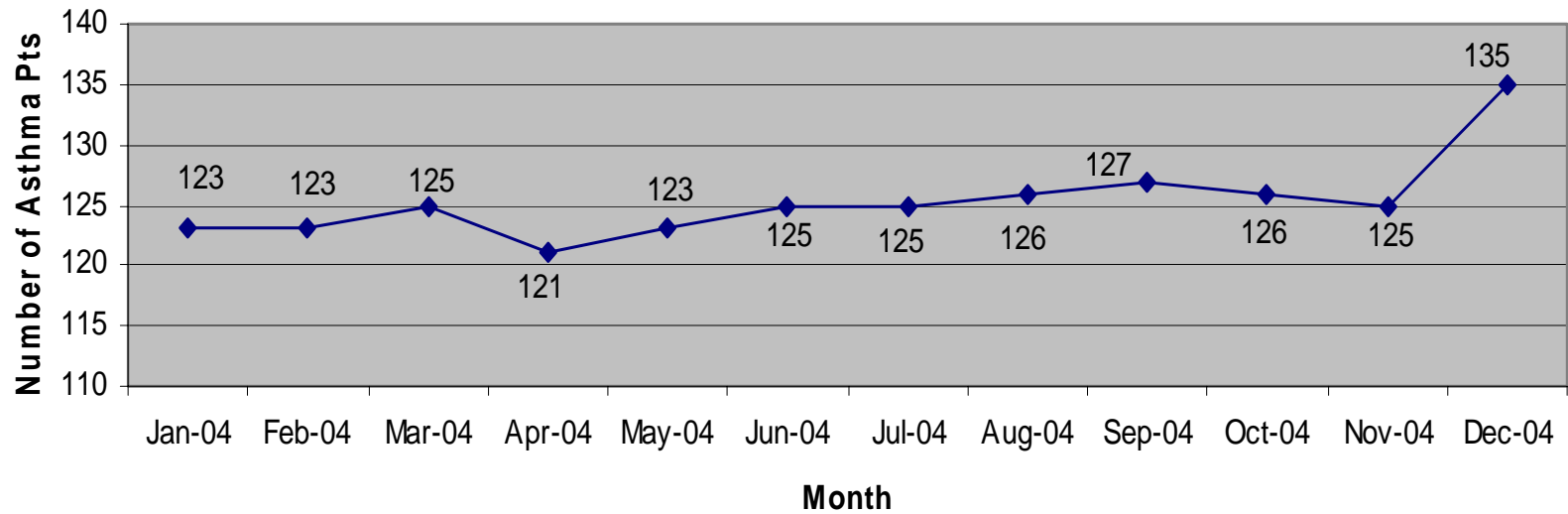
ASTHMA: New Mexico

Total number Health Centers and Sites:

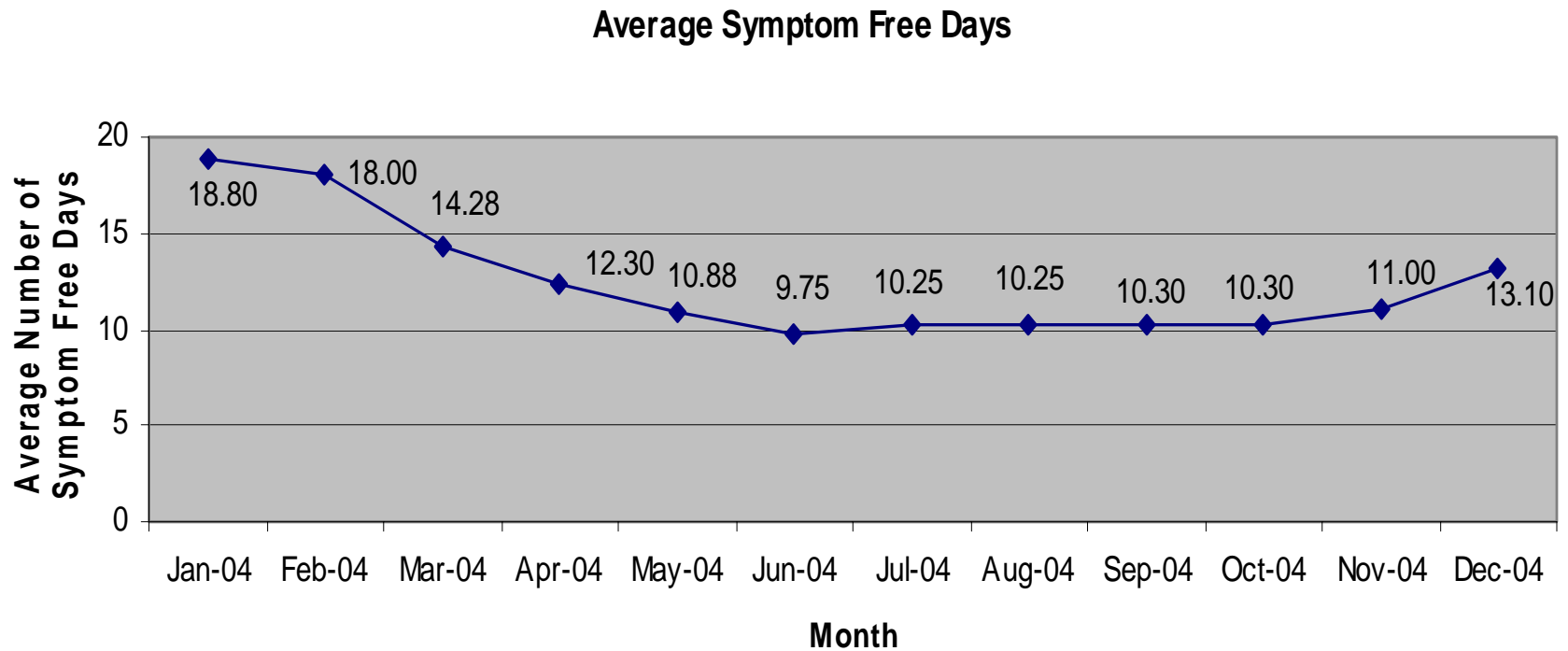
- Ben Archer CHC (1)
- La Familia CHC (1)

Registry Size

Total Number Asthma Pts in Registry

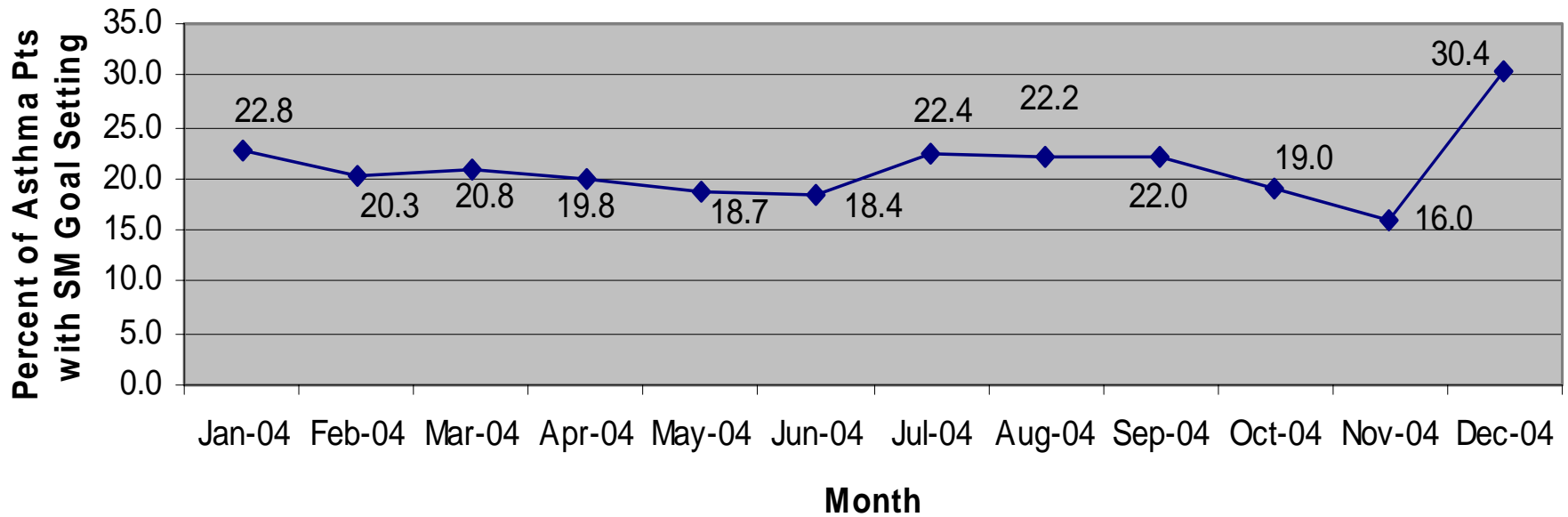


Average Symptom Free Days in last 14 days



% w/Self Management Goal Setting

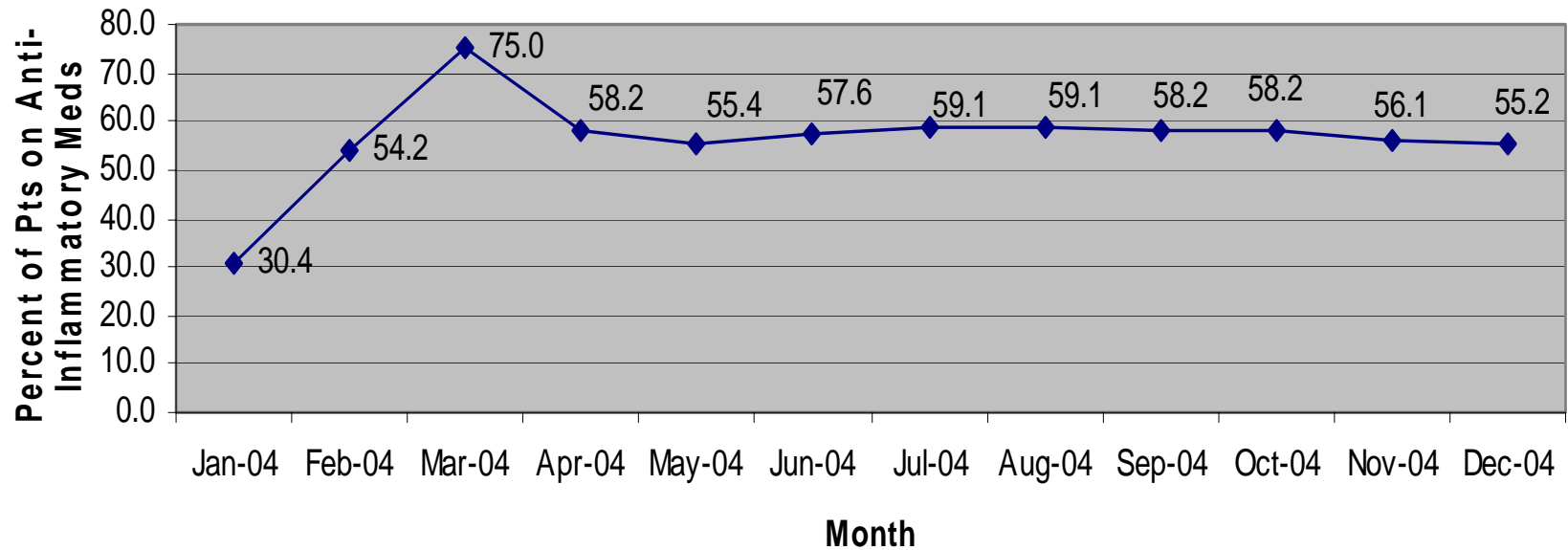
Percent of Asthma Pts with SM Goal Setting



% prescribed Anti-Inflammatory Medication



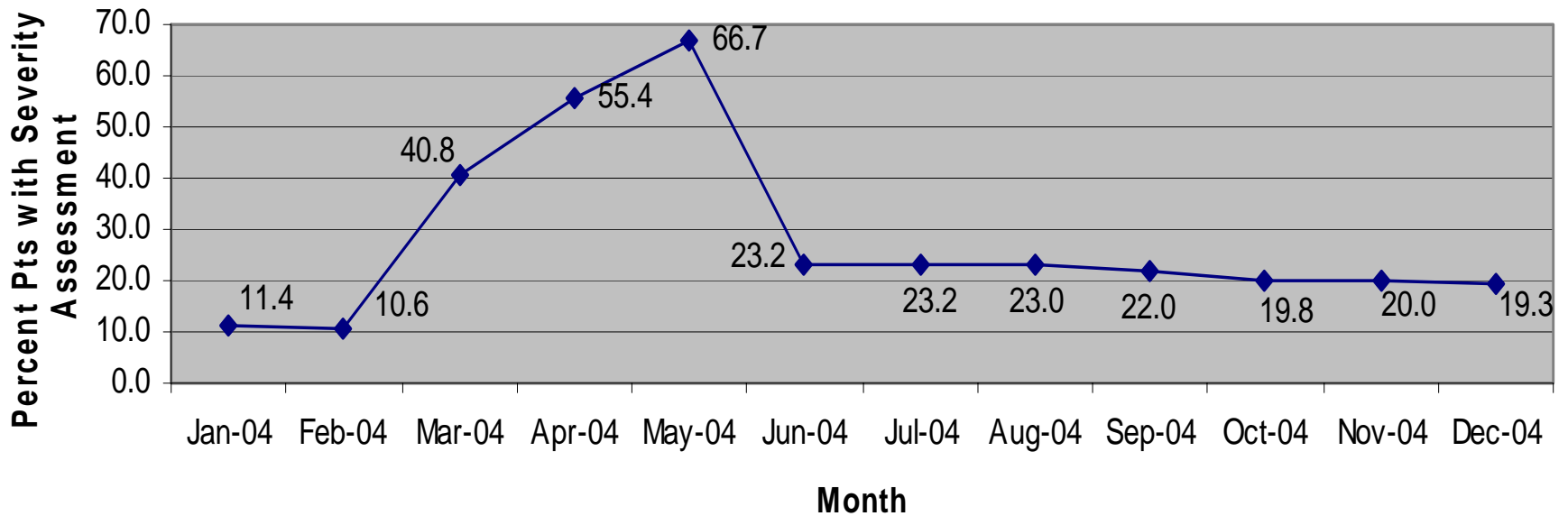
Percent of Asthma Pts on Anti-Inflammatory Meds



% Patients with Severity Assessment



Percent of Asthma Pts with Severity Assessment



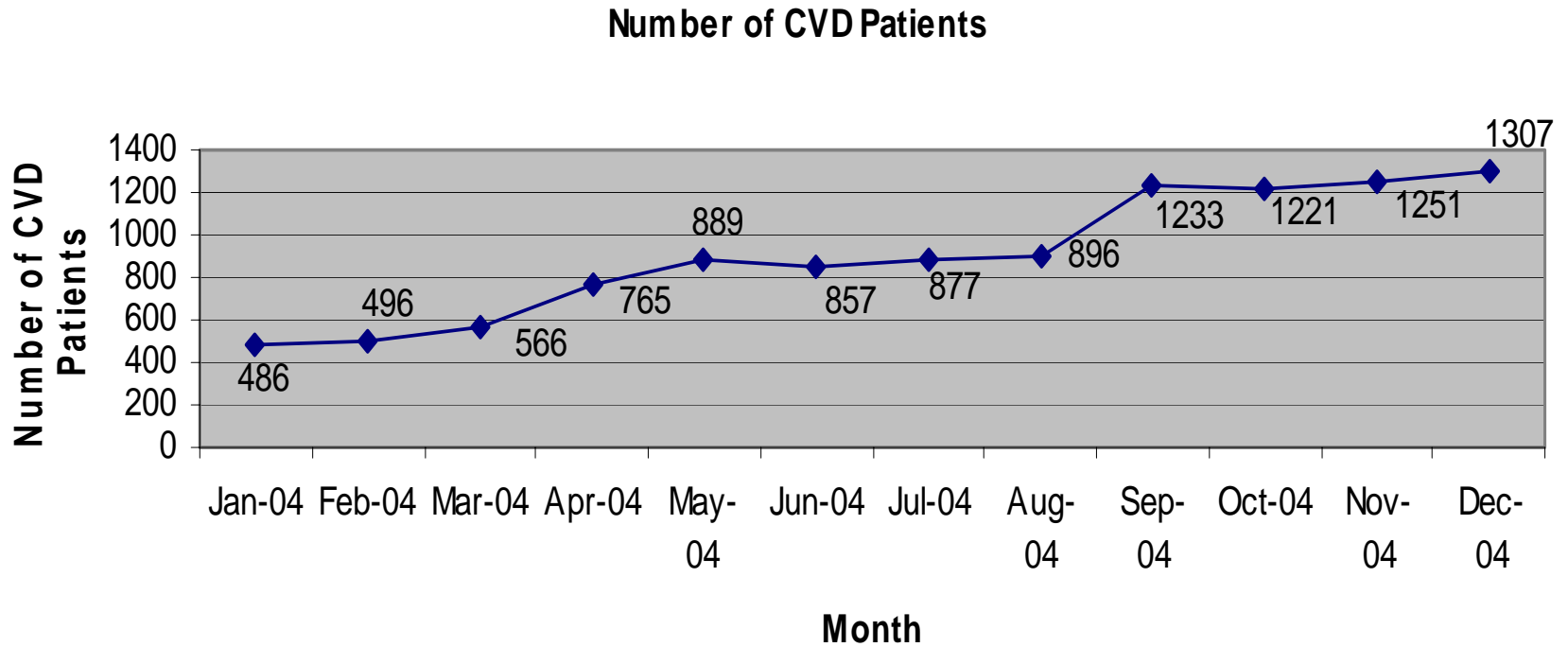


CARDIOVASCULAR: New Mexico

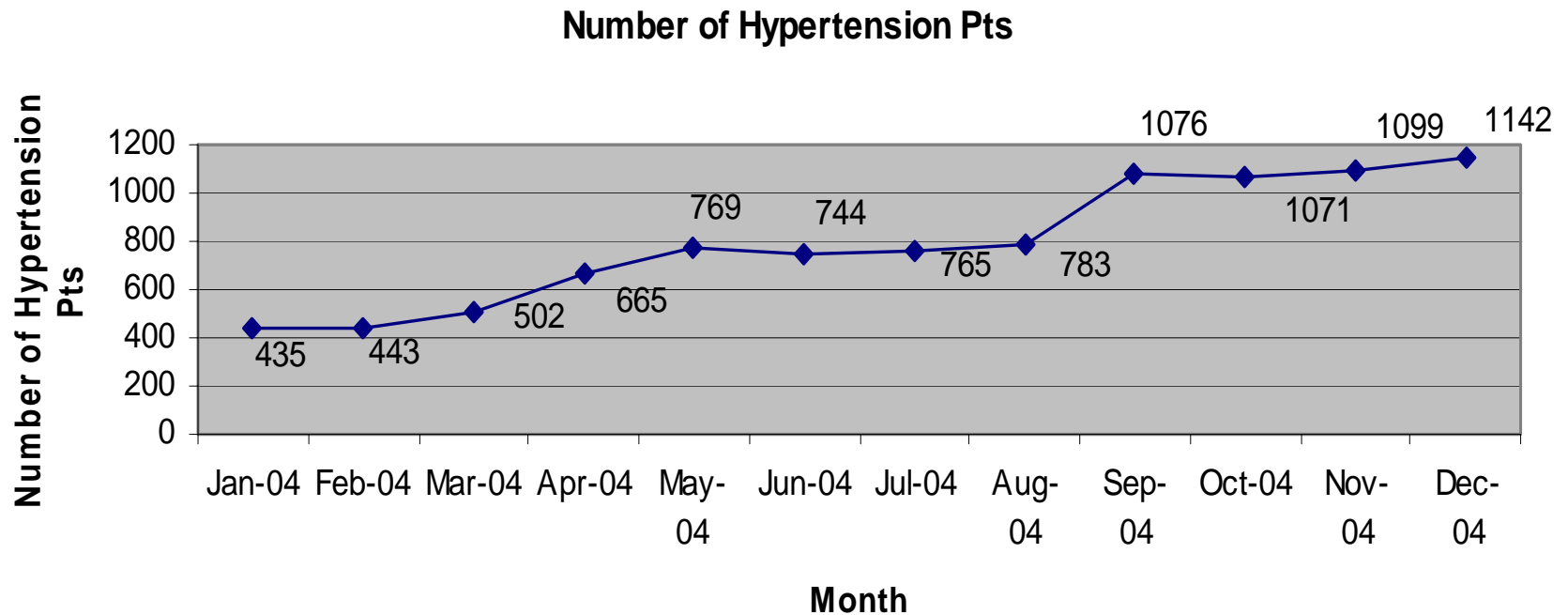
Total number Health Centers and Sites:

- Ben Archer (4)
- Presbyterian (1)
- La Casa (4)

Registry Size



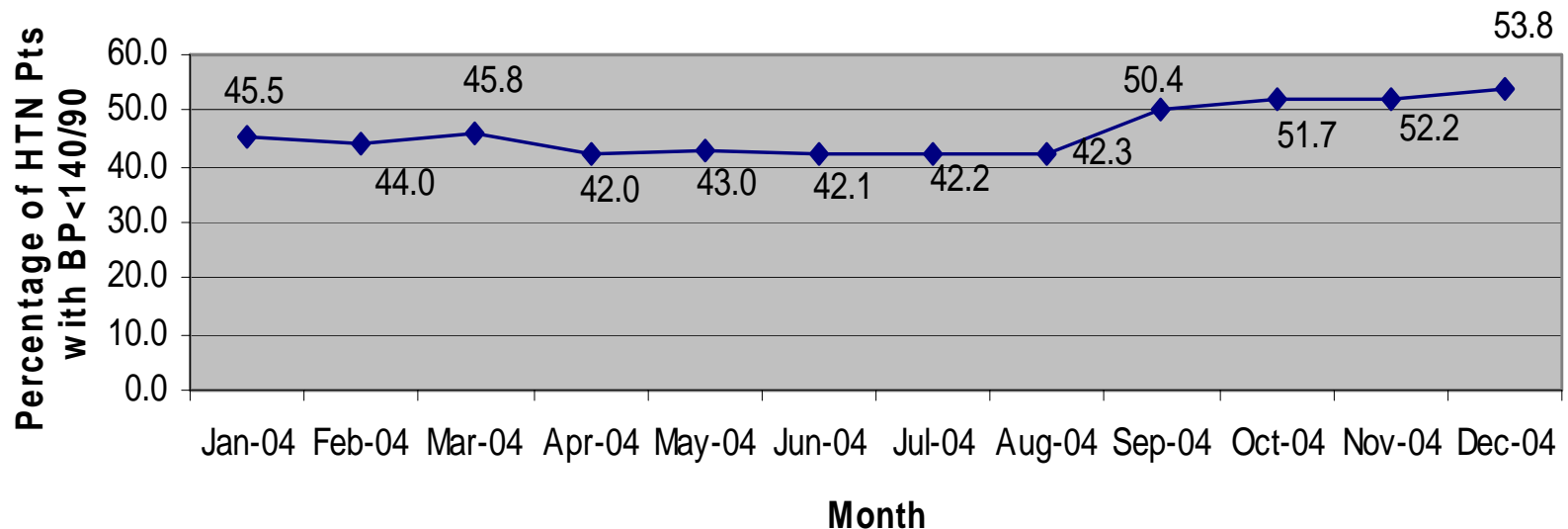
Registry Size # pts with HTN



% Patients w/Blood Pressure < 140/90

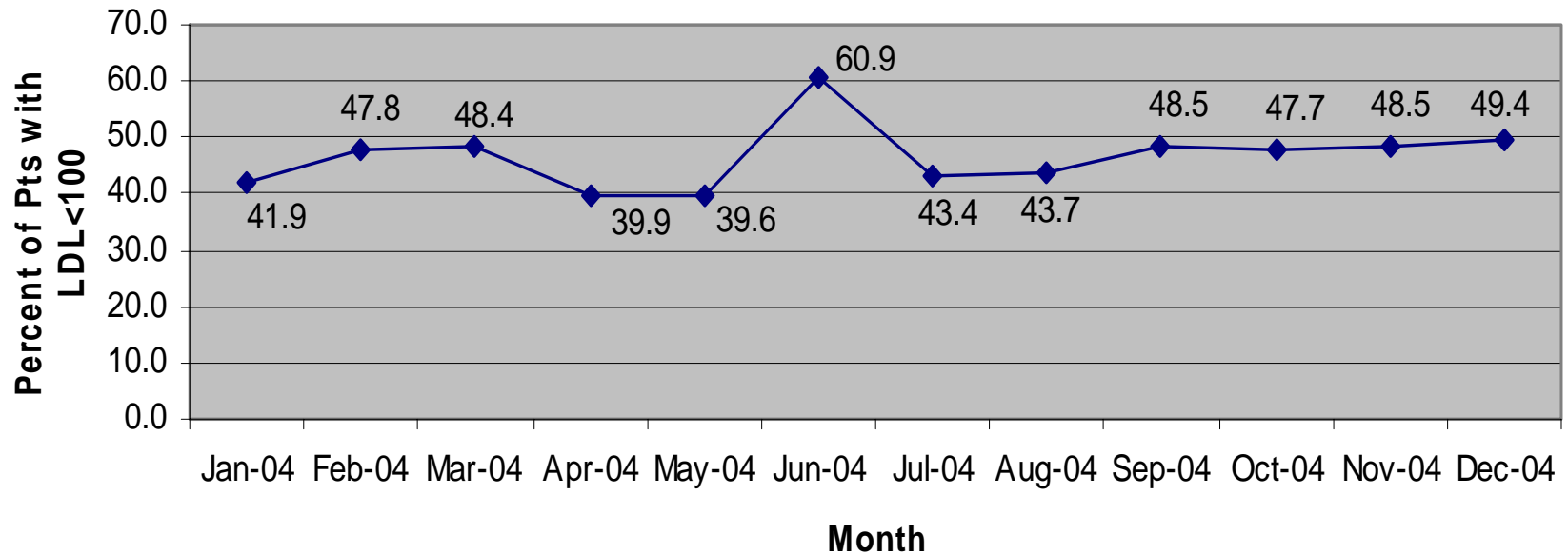


Percentage of HTN Pts with BP<140/90



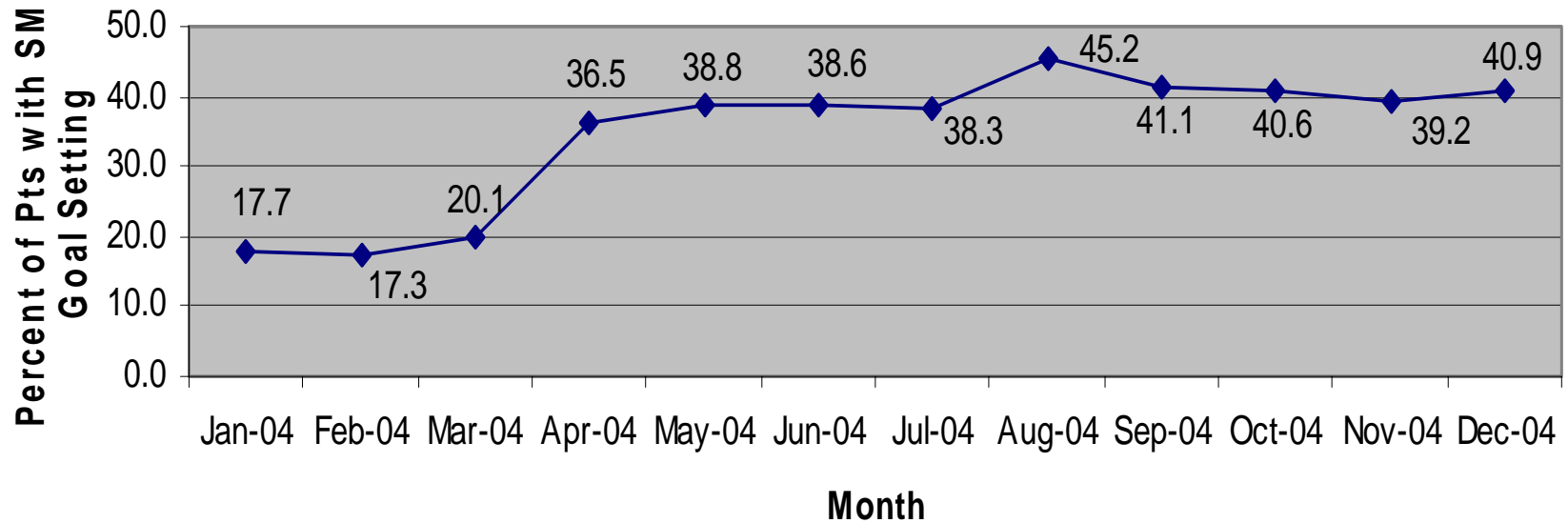
Patients LDL < 100

Percent of Pts with LDL<100



% Patients w/Self Management Goal Setting

Percent of Pts with SM Goal Setting



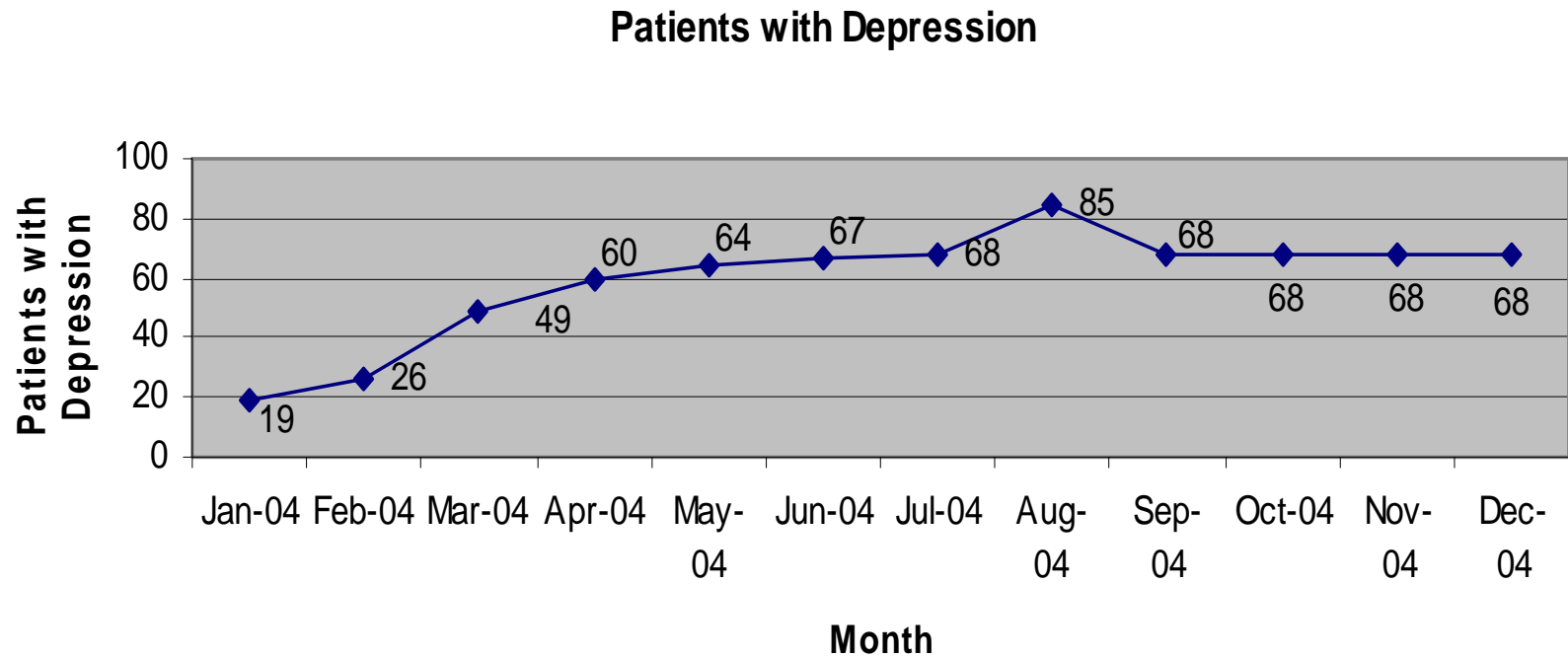


Depression: New Mexico

Total number Health Centers and Sites:

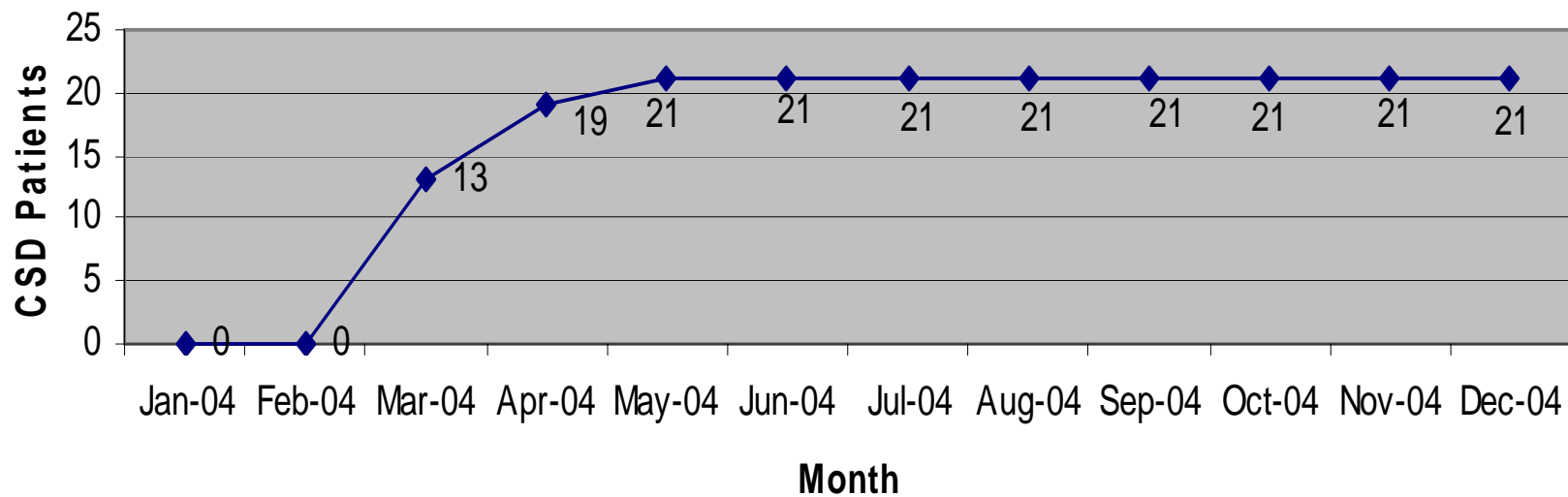
- La Clinica de Familia (1)

Patients with Depression



Patients with CSD (PHQ Score >10)

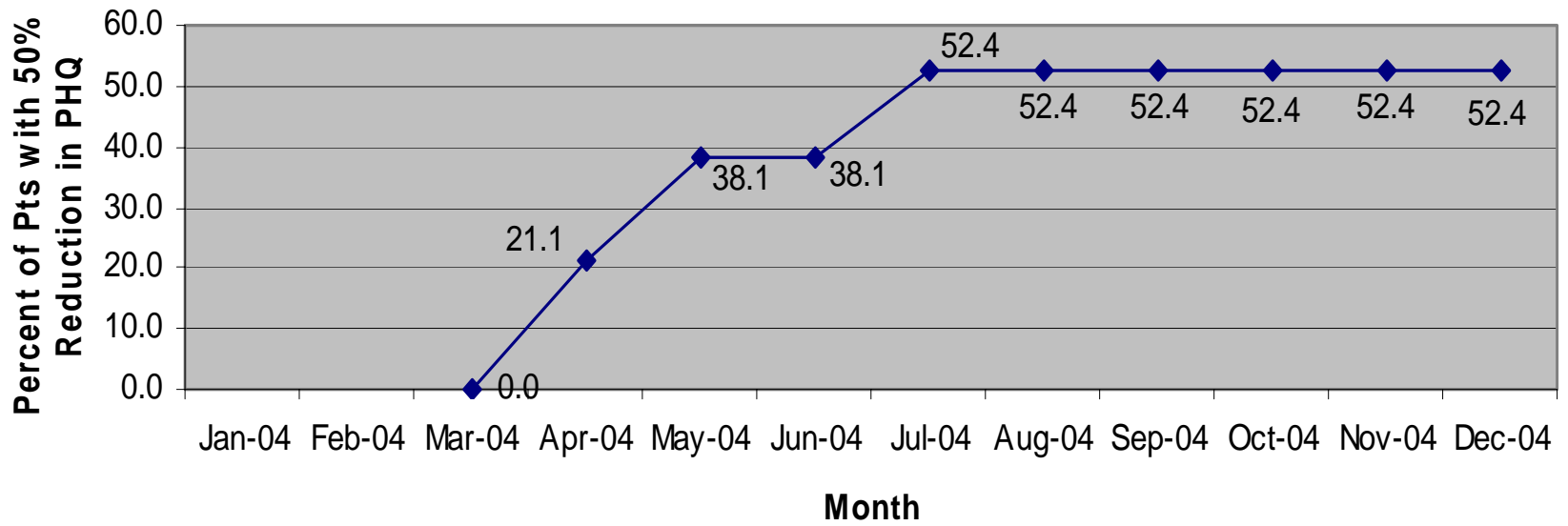
Patients with CSD



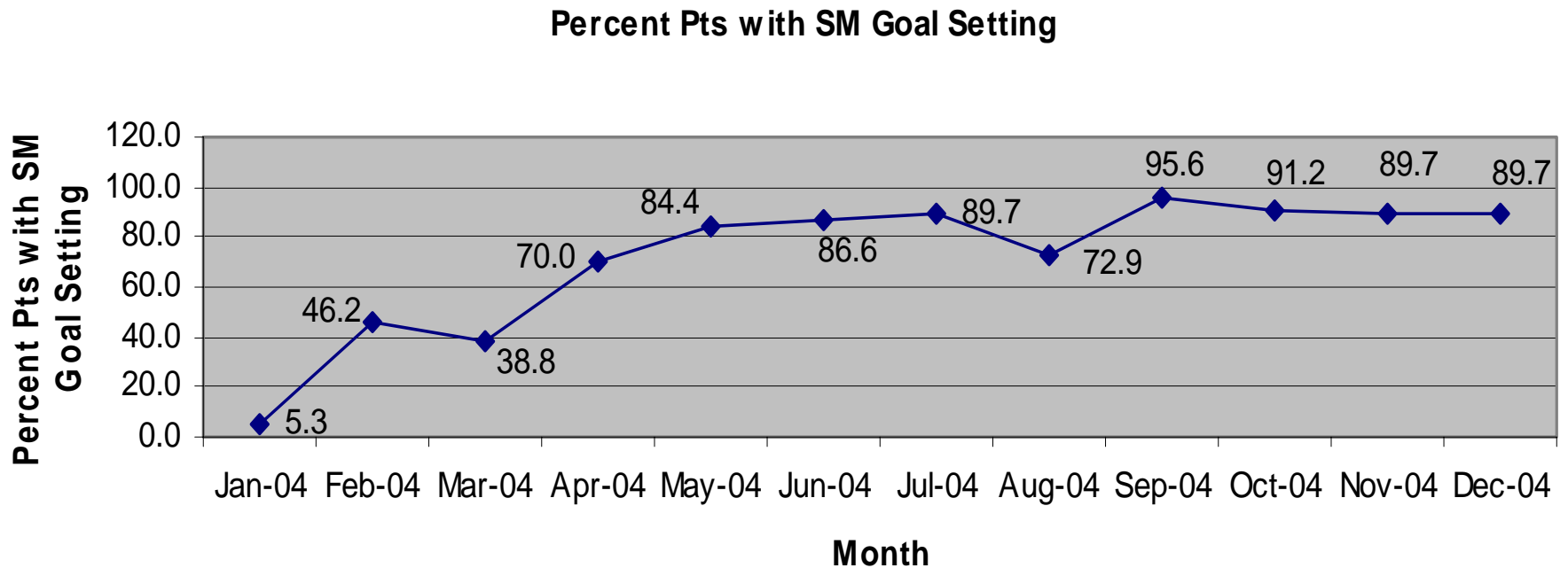
% CSD Patients with 50% Reduction in PHQ



Percent of Pts with 50% Reduction in PHQ



% w/Self Management Goal Setting





State Highlights

- DCPP and CVD Program Relationships
- PCA Relationships
- CHC staff are members of Morehouse Faculty, Condition faculty, and PECS Advisory Groups
- Wellness programs with HDC measurements for CHC staff
- Incorporated Oral Health into Medical Practice
- HDC is part of strategic plan, BOD meetings, new staff orientation, and job descriptions