

# WCC Steering Committee/PCA Retreat State Coordinator Presentation

---

Jennifer Mattern

February 5, 2005

Colorado



# HDC Participation

---

	Total # CHCs	# CHCs participating	Total # sites	# sites participating
<b>CO</b>	<b>15</b>	<b>15</b>	<b>91</b>	<b>61</b>



# Total Number of Health Centers by Phase

---

- **Colorado:**
  - Phase 1: 2
  - Phase 2: 14

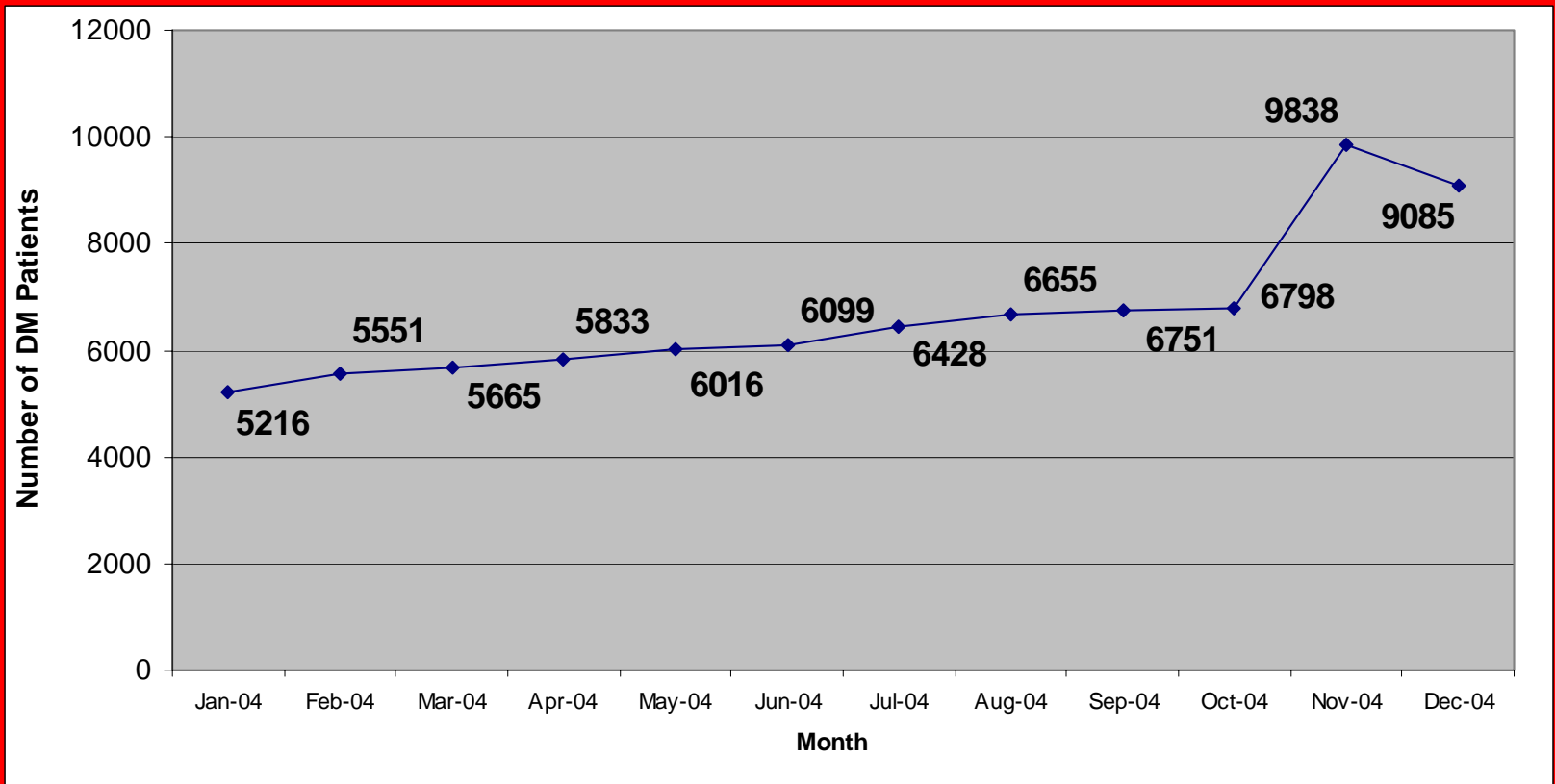
# DIABETES

## Total number Health Centers: 13 (43 Sites)

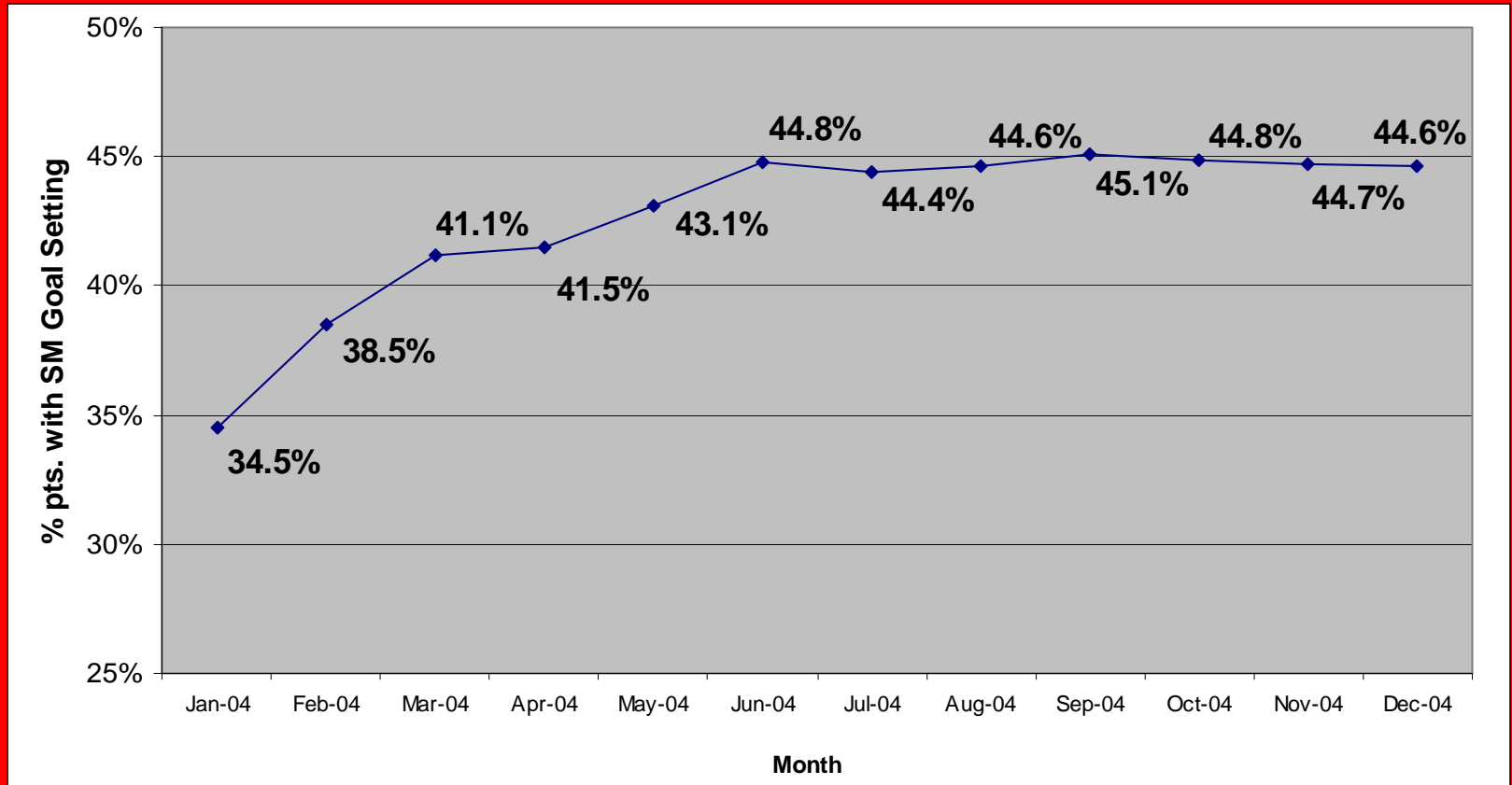
---

- Clinica Campesina (3)
- Colorado Coalition for the Homeless – Stout Street Clinic (1)
- Denver Health (4)
- Dolores County Health Association (1)
- High Plains (1)
- MCPN (6)
- Mountain Family Health Centers (3)
- Peak Vista (5)
- People's (1)
- Pueblo CHC (4)
- Salud Family Health Centers (9)
- Uncompahgre Medical Center (1)
- Valley Wide Health Service, Inc. (4)

# Registry Size



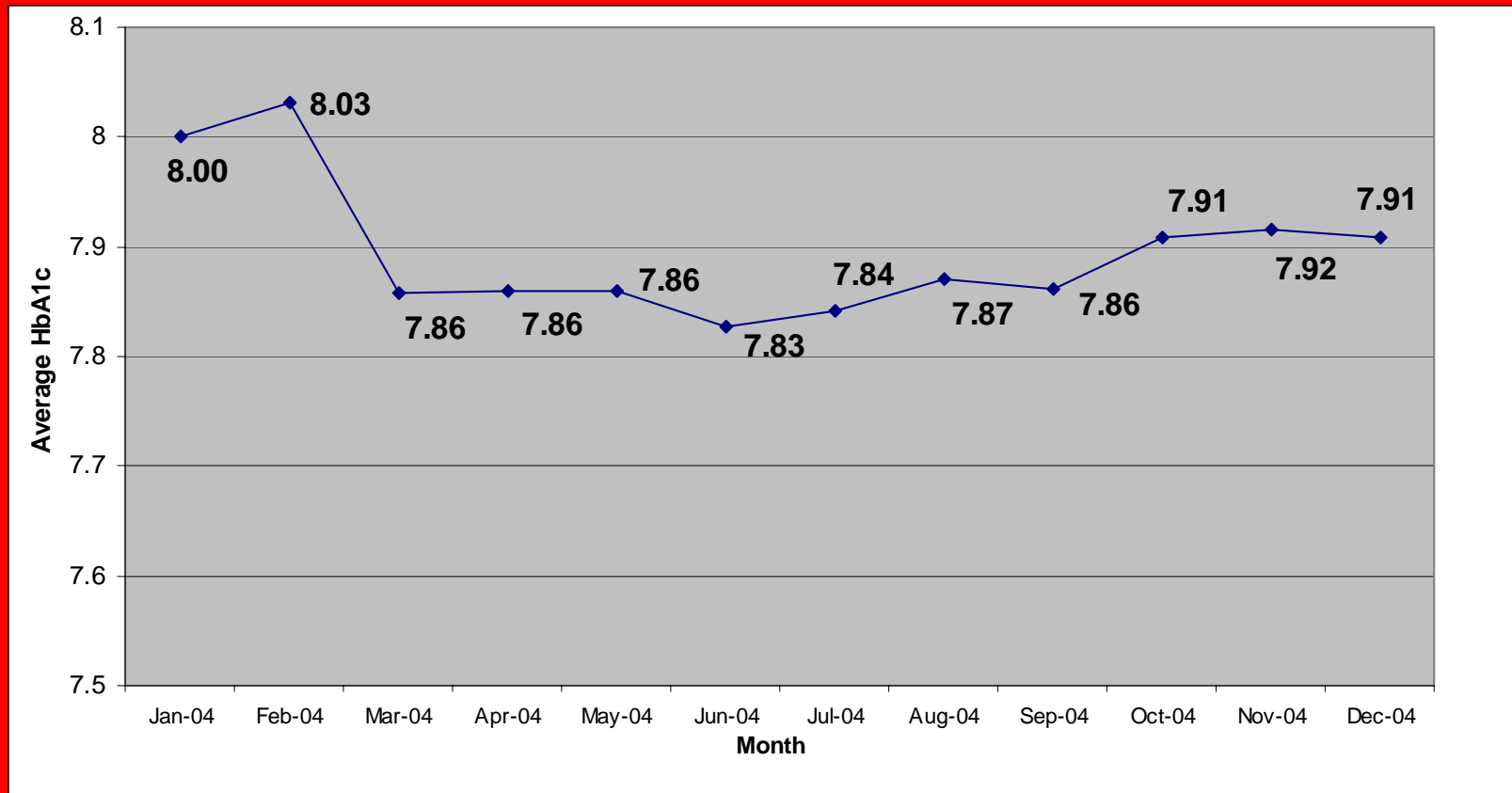
# % Patients w/Self Management Goal Setting\*



Goal: 70%

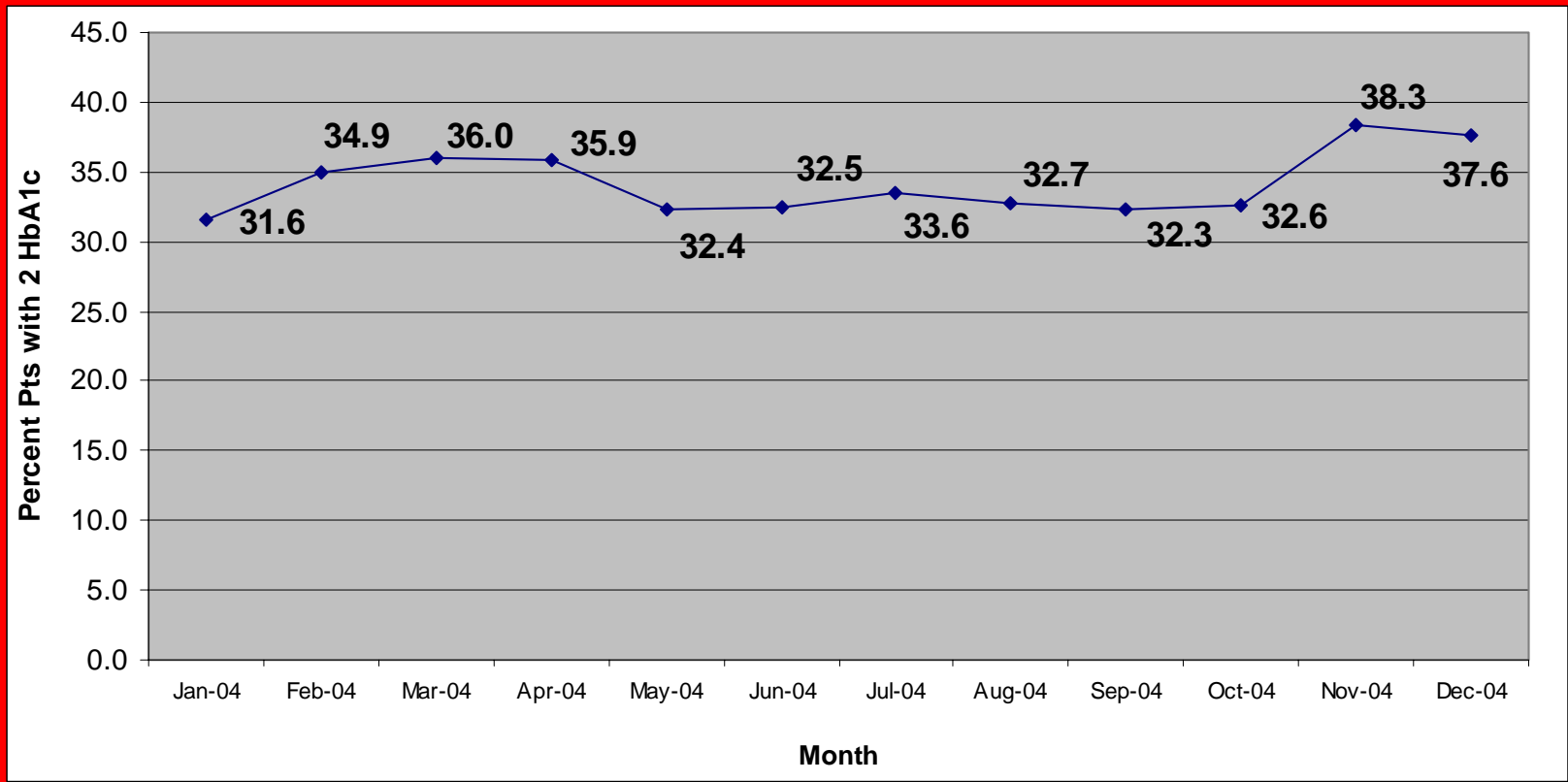
\* Does not include Denver Health data.

# Average HbA1c



Goal: 7.0

# % Patients w/2 HbA1c in the last year



Goal: 90%

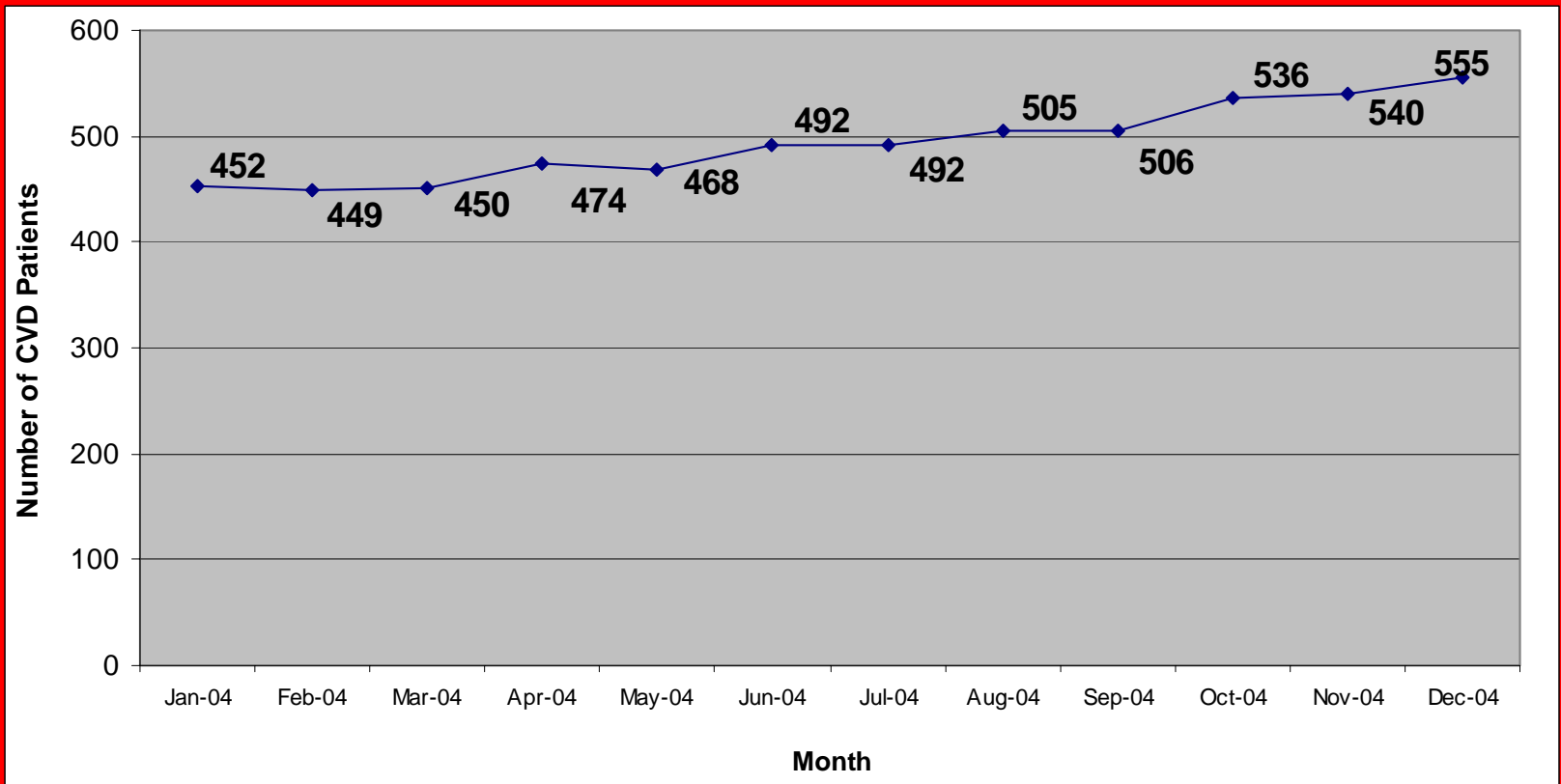


# CARDIOVASCULAR

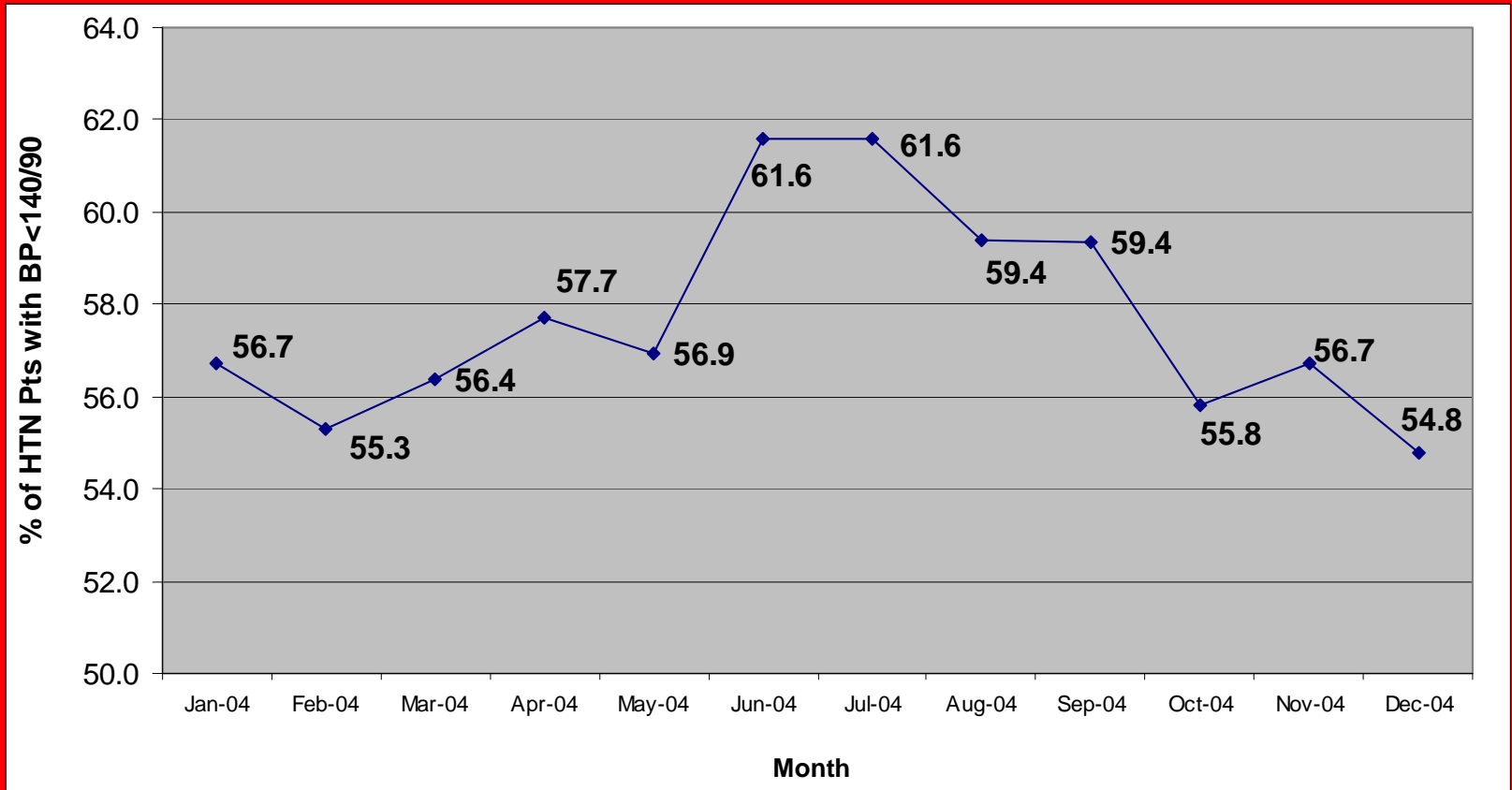
---

- **Total Number Health Centers: 1 (1 Site)**
- High Plains Community Health Center (1)
- *Dove Creek Community Health Center spread to CVD in January 2005 (1)*

# Registry Size

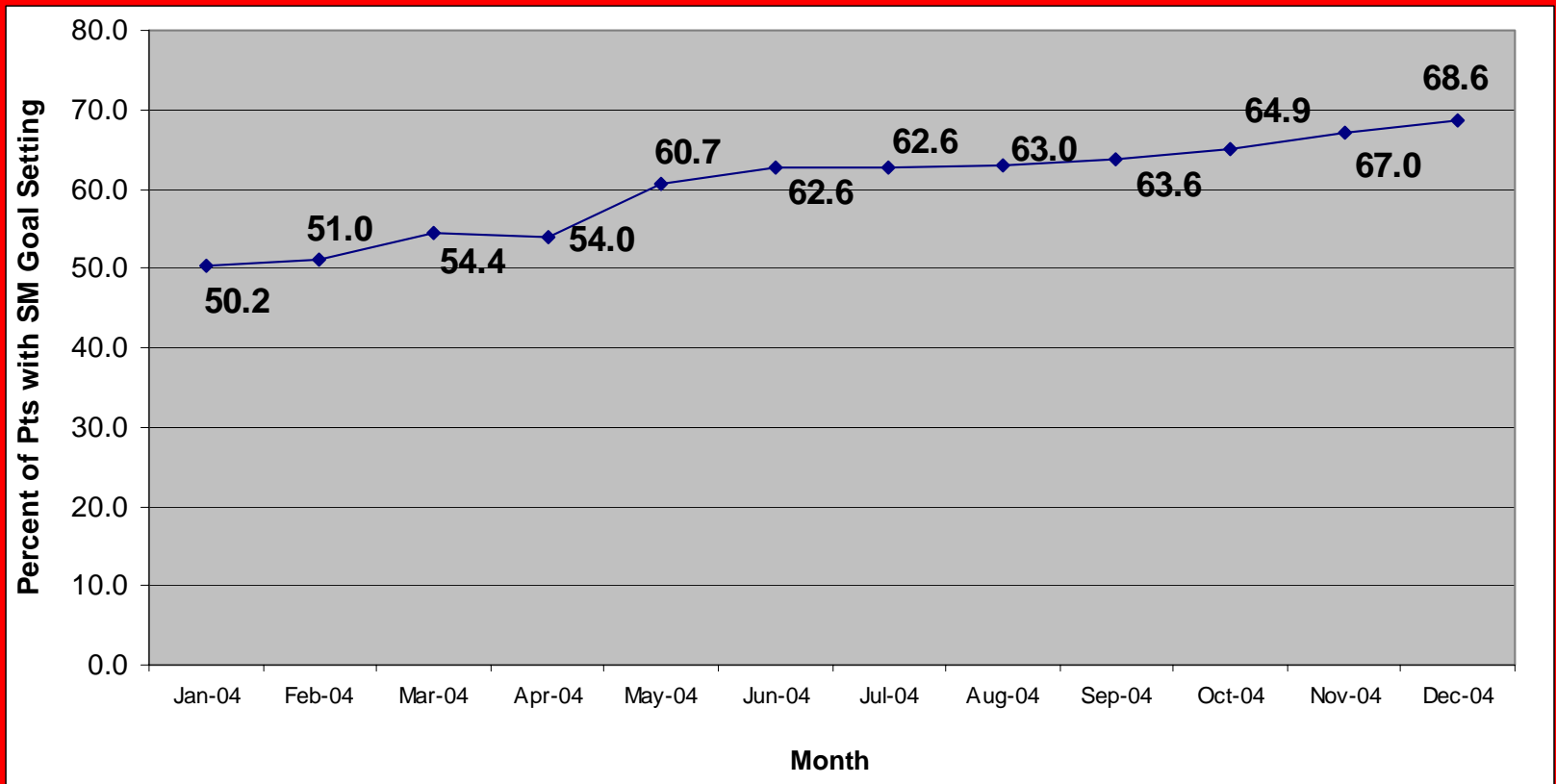


# % w/Blood Pressure < 140/90



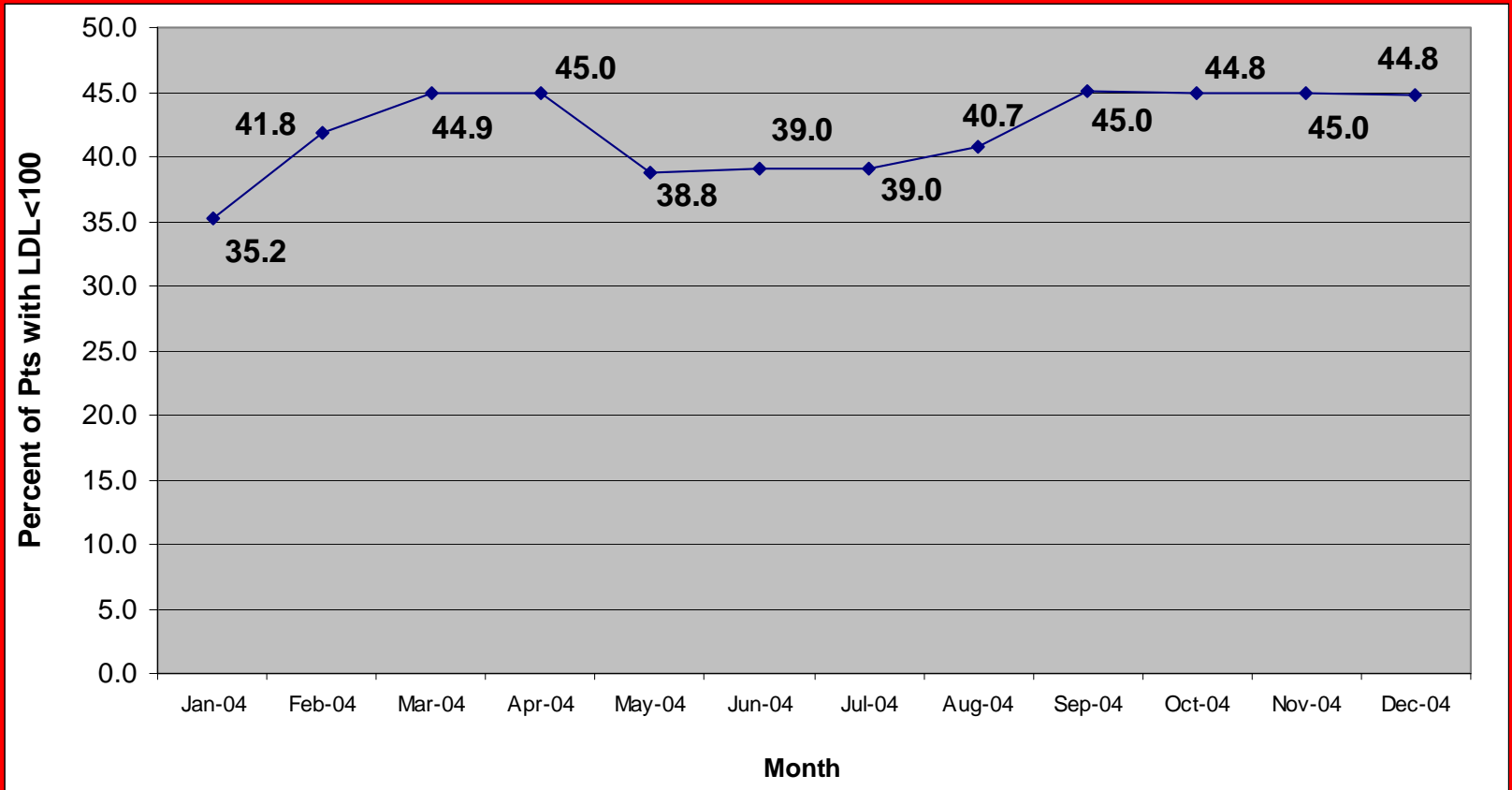
Goal: 50%

# % w/Self Management Goal Setting



Goal: 70%

# % w/ LDL Cholesterol < 100



Goal: 60%

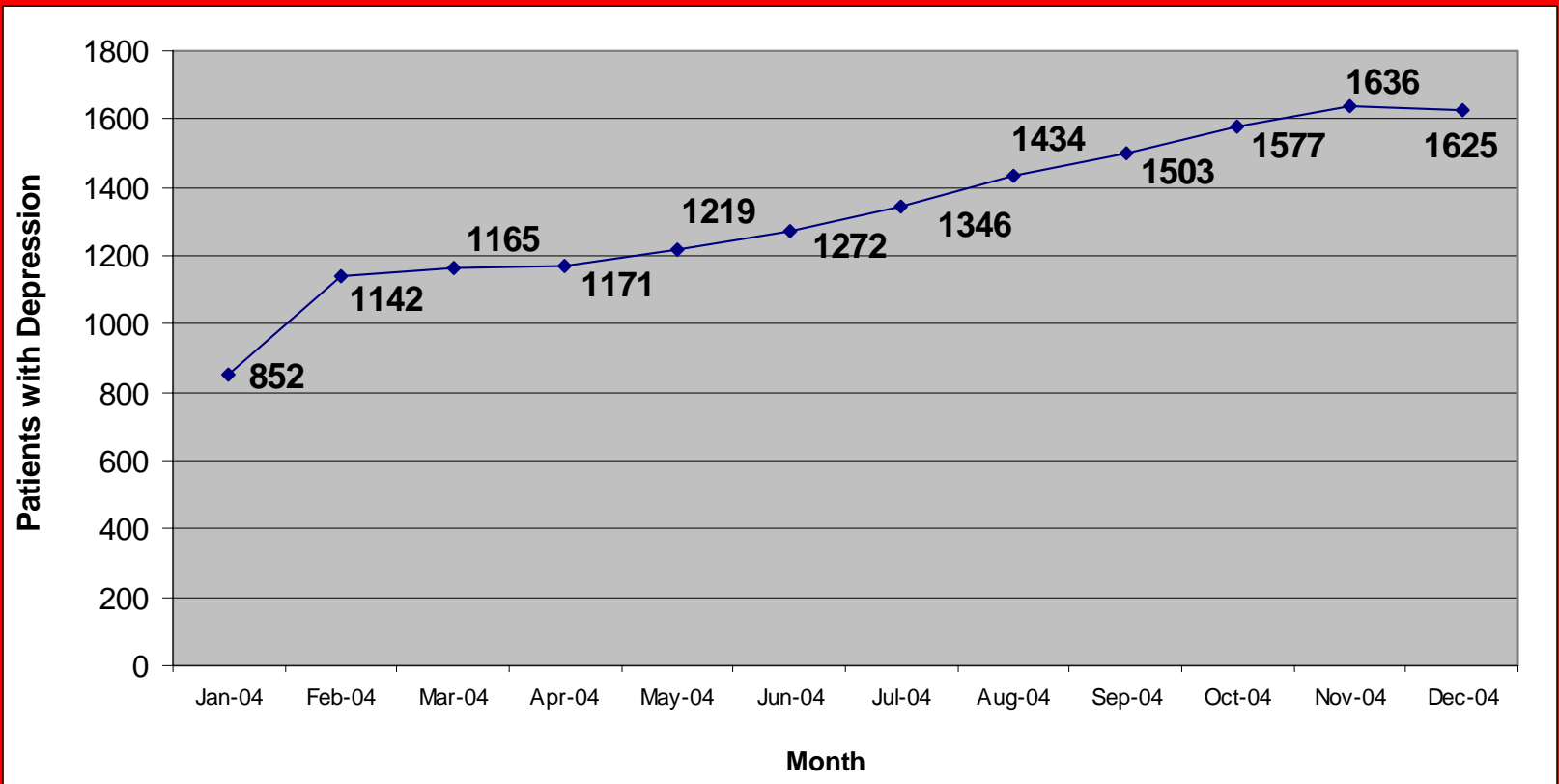


# Depression

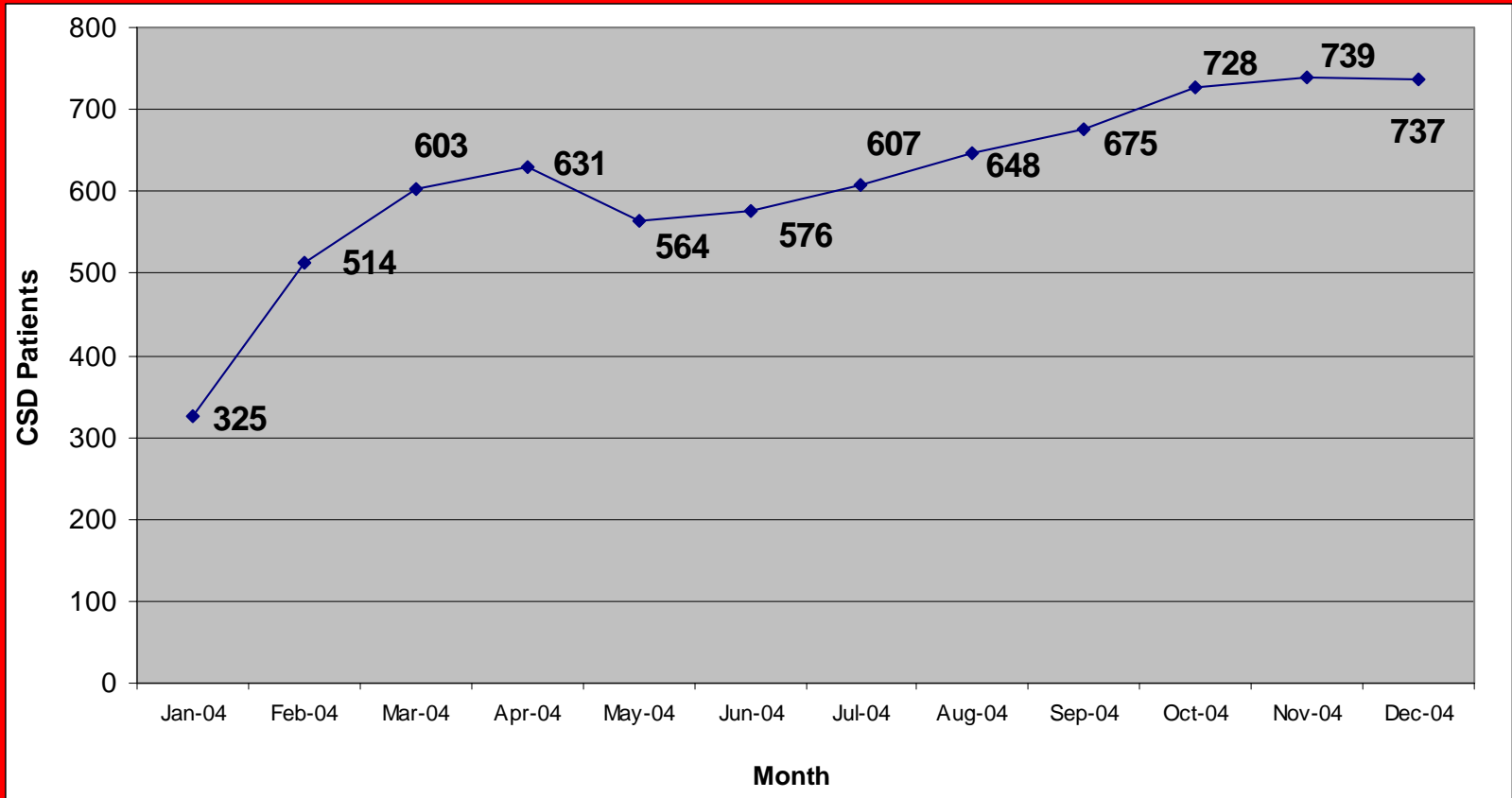
---

- **Total Health Centers: 4 (11 Sites)**
- Clinica Campesina (3)
- Mountain Family Health Center (3)
- People's Clinic (1)
- Pueblo Community Health Center (4)
- *Denver Health Adolescent Depression (9) (Not included in aggregate Depression data)*

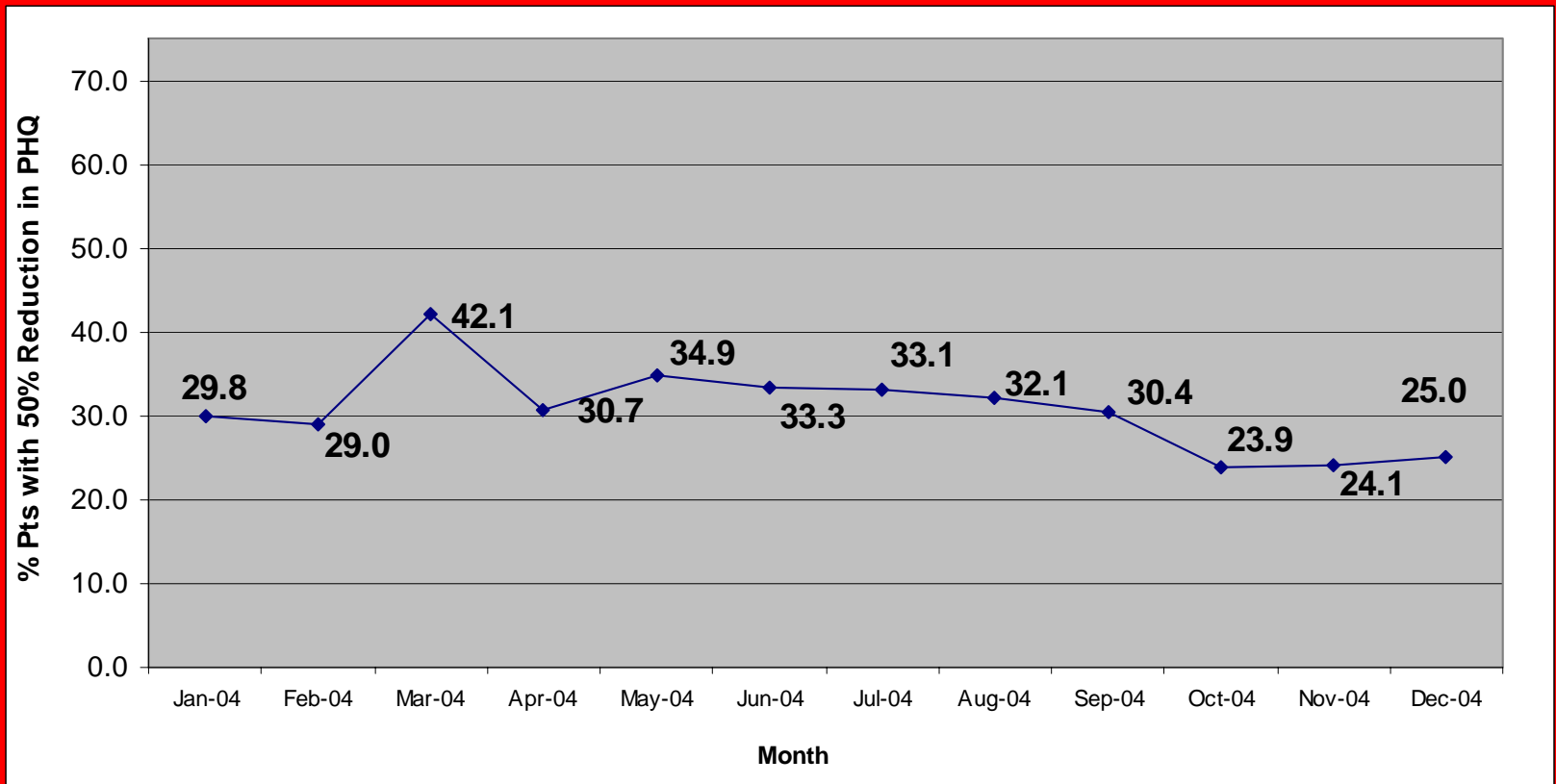
# Registry Size



# Number of CSD Patients (PHQ score > 10)

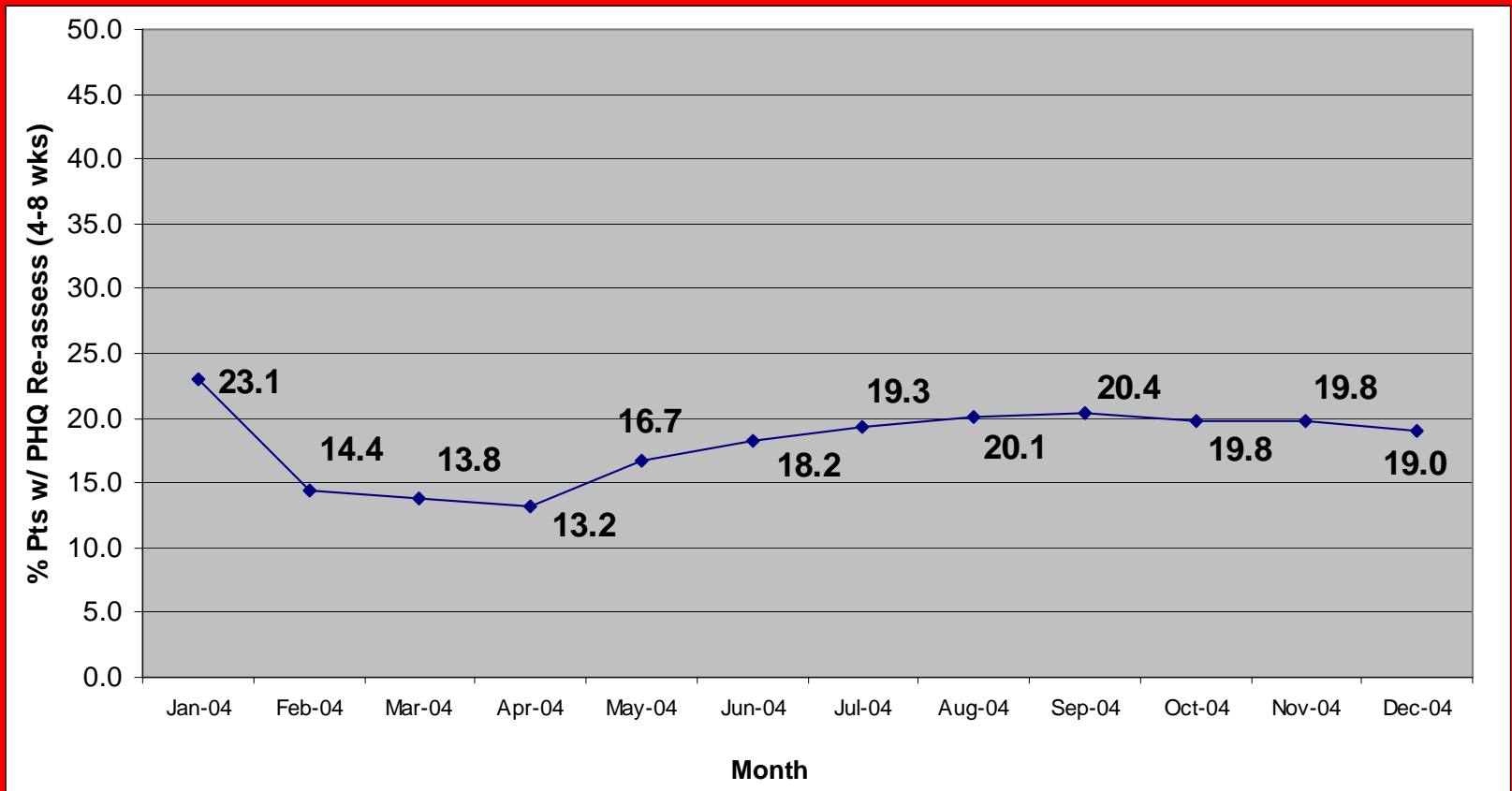


# % CSD Patients with 50% Reduction in PHQ



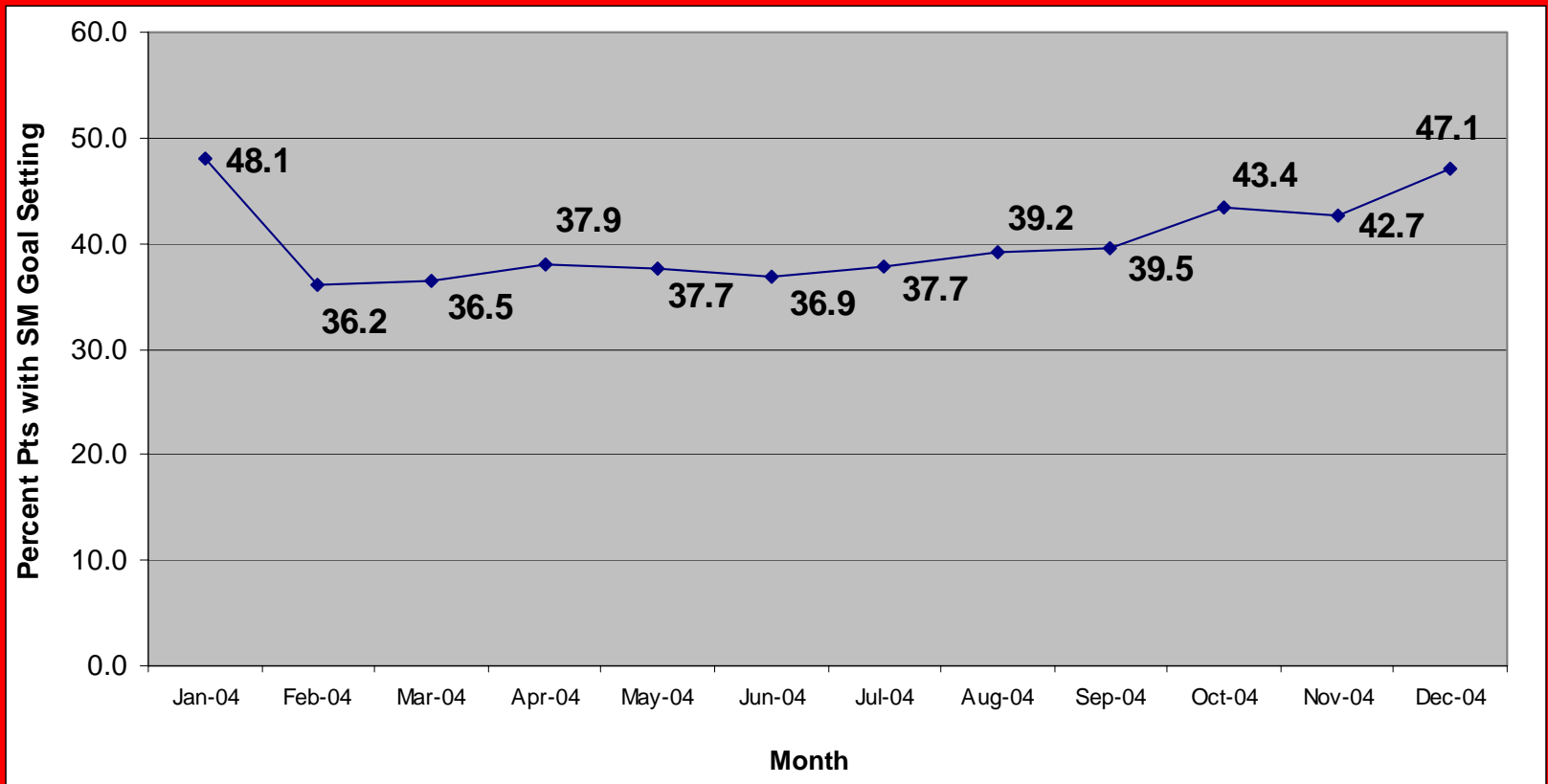
Goal: 40%

# % CSD Patients w/documentated PHQ Reassessment b/w 4-8 wks of last new episode PHQ



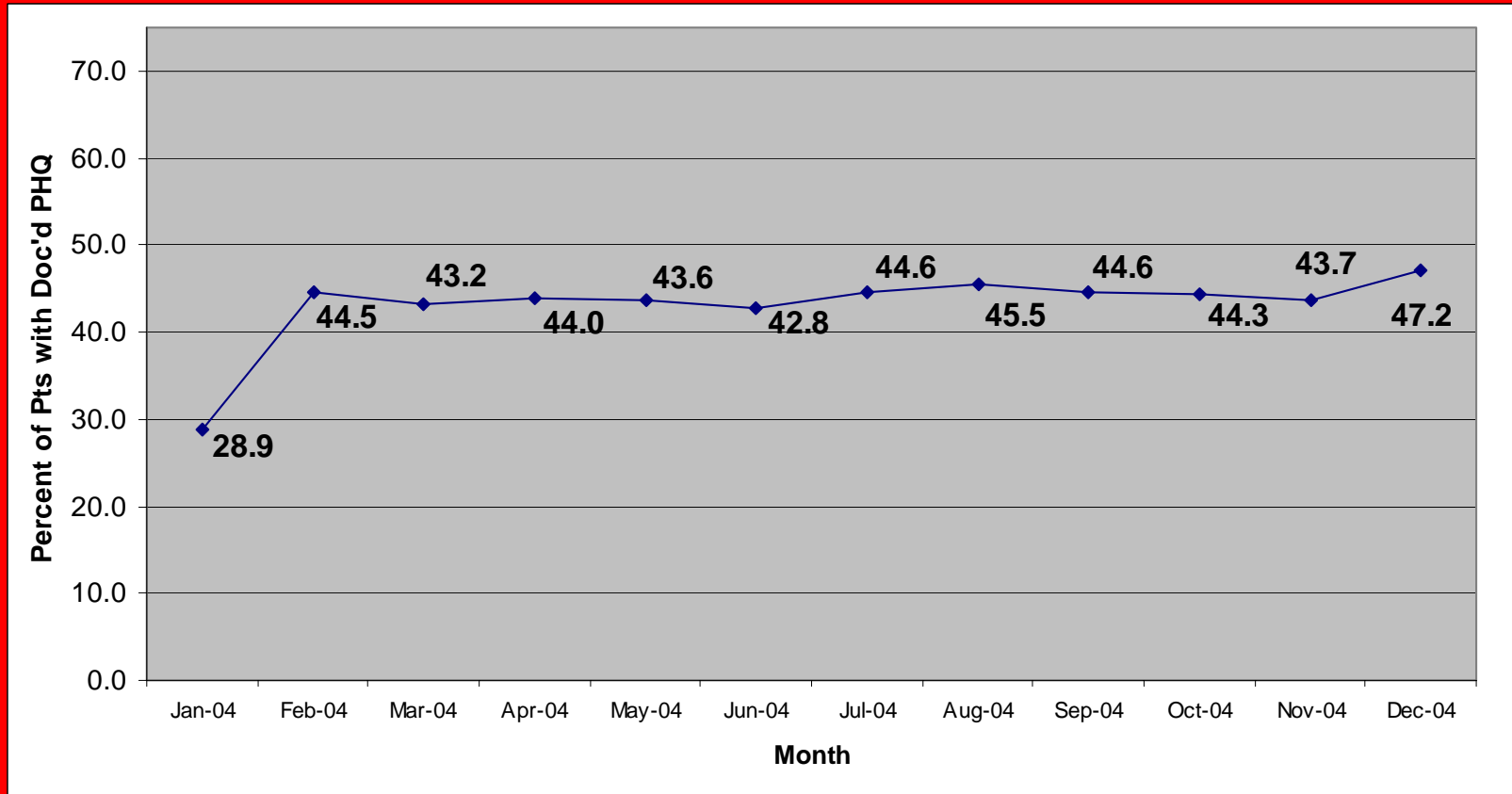
Goal: 70%

# % w/Self Management Goal Setting



Goal: 70%

# % w/Diagnosis of Depression and documented PHQ in last 6 months



Goal: 70%

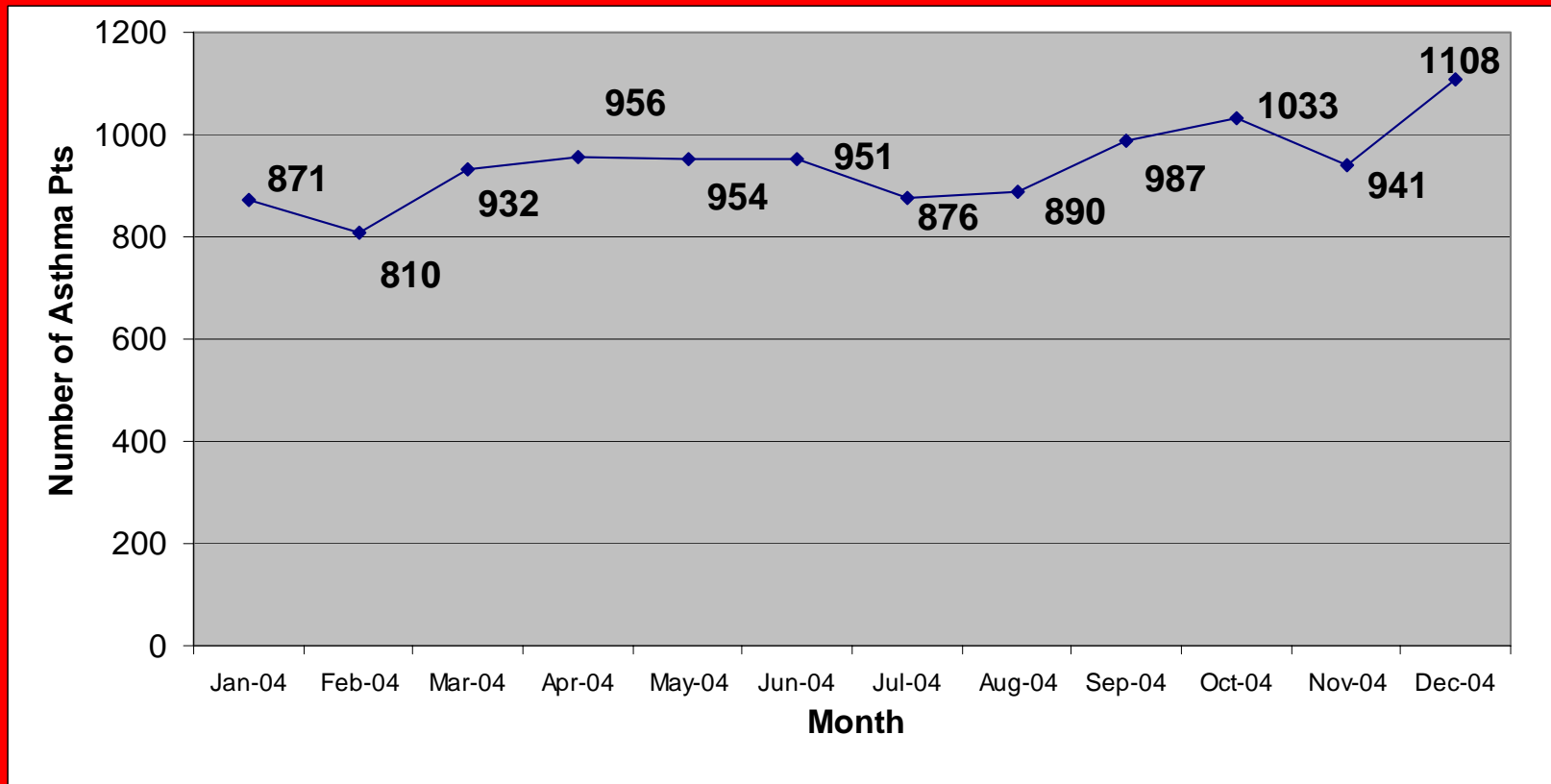


# ASTHMA

---

- **Total Number Health Centers: 3 (15 Sites)**
  - Clinica Campesina (3)
  - Denver Health (10)
  - Metro Community Provider Network (2)

# Registry Size

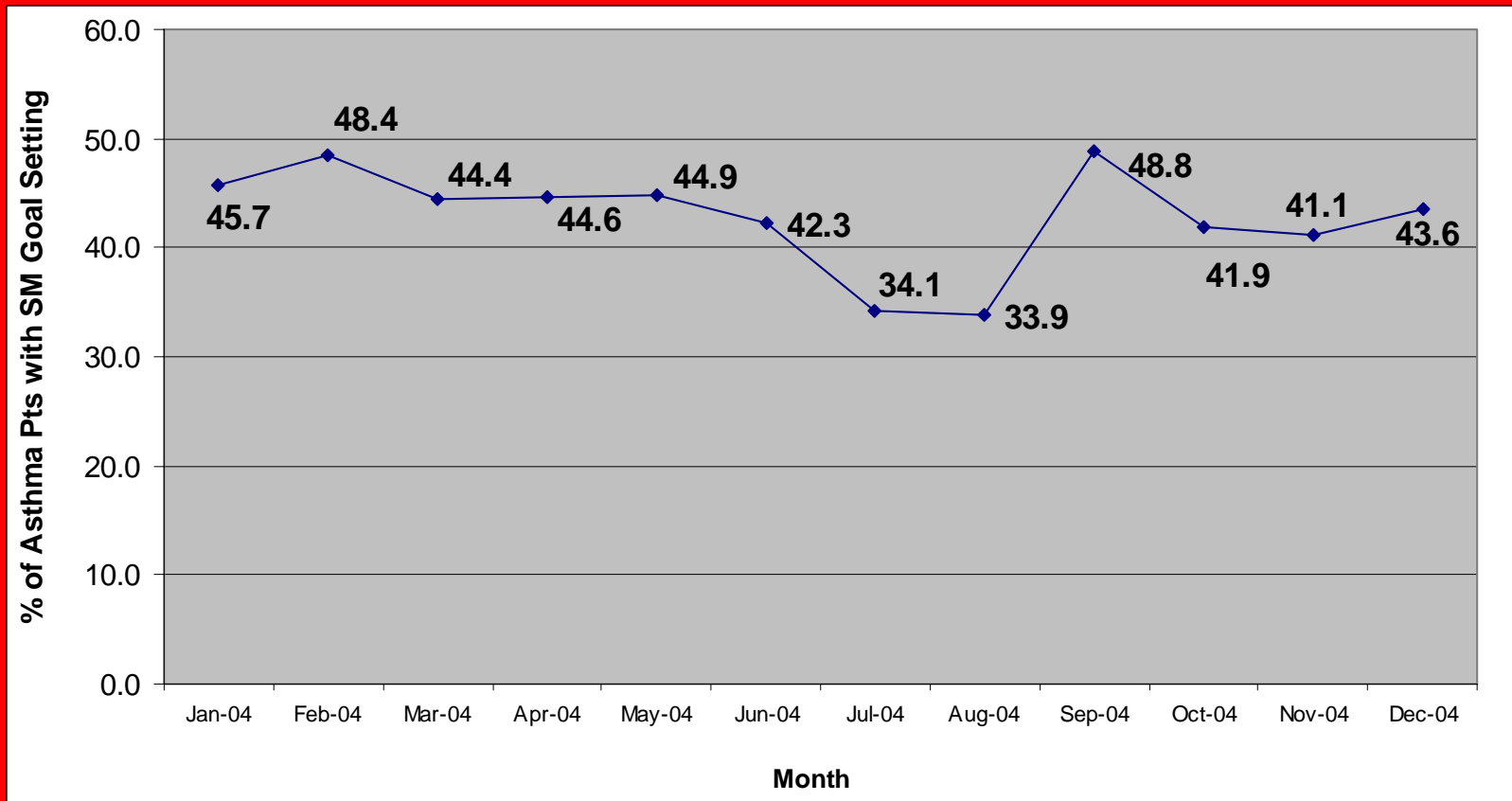


# Average Symptom Free Days in last 14 days



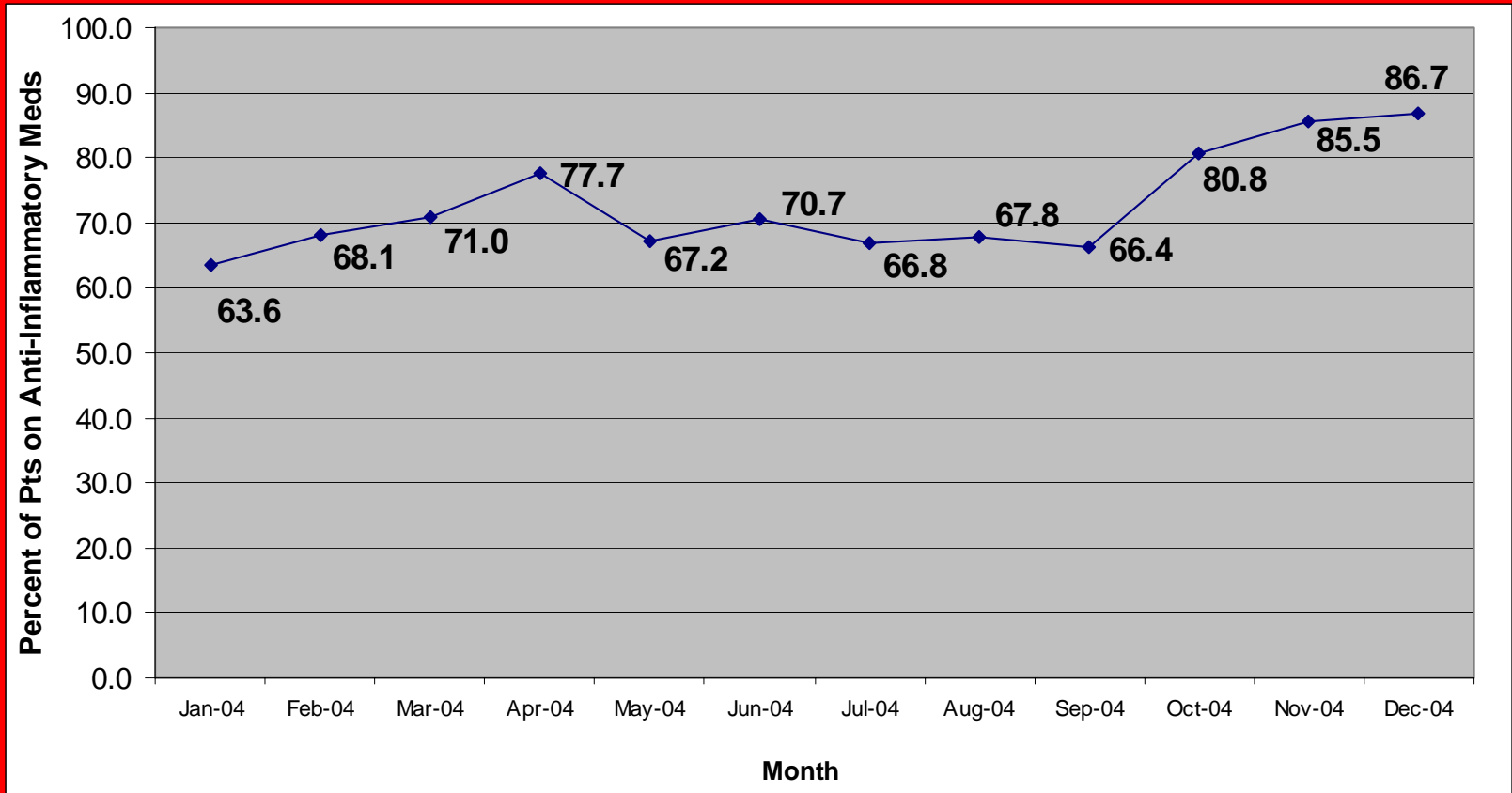
Goal: > 10 days

# % w/Self Management Goal Setting



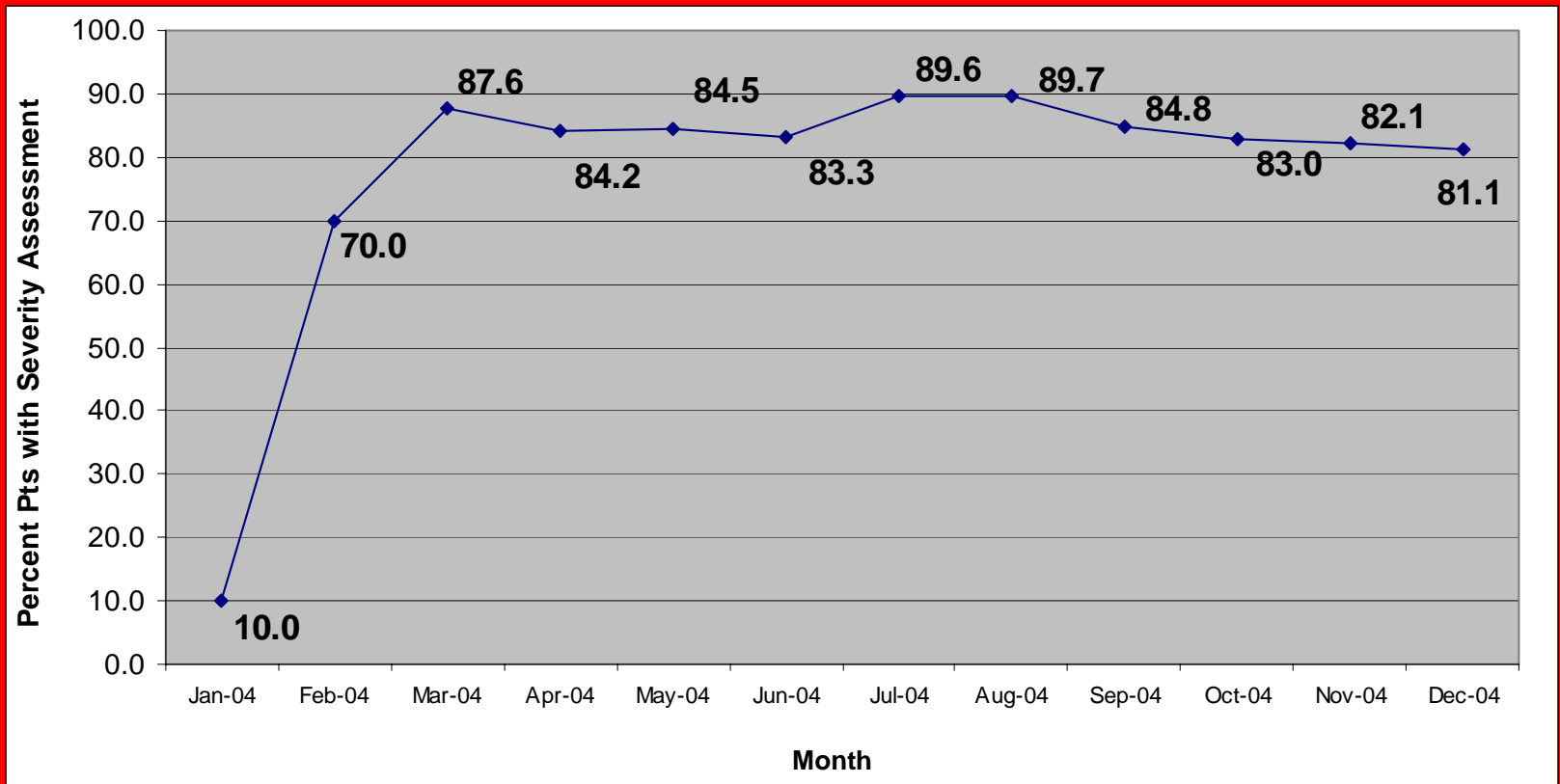
Goal: >70%

# % prescribed Anti-Inflammatory Medication



Goal: >95%

# % Patients with Severity Assessment



Goal: >90%



# CANCER

---

- **Total Number of Health Centers**
  - Denver Health
  - Valley Wide Health Services Inc.
  - Challenges for Cancer Collaborative teams:
    - Data entry on large numbers of patients – IT capabilities, management of thousands of patients
    - Tracking patient follow-up and results if testing is done outside the health center
    - Resources for screening and diagnostic studies
    - Conceptual shift from chronic disease focus to prevention focus



# Denver Health Data

---

As of December 15, 2004:

- Total # of Women  $\geq 21$  Plus Men  $\geq 51$ : **2806**
- Total Patients  $\geq 51$ : **972**
- % Women (age  $\geq 42$ ) with Mammogram in last 2 years: **42.25%**
- % Women (age  $\geq 21$ ) with Pap Smear within last 3 years: **55.43%**



# CO State Highlights

---

- Collaborative relationship with Diabetes Prevention and Control Program (DPCP): Mini-grants to health centers in CO through PCA for HDC support
- Leadership development of health center staff: through work in HDC, many staff have become experts and national advisors for the Collaboratives
- LEAP Program: Lower Extremity Amputation Prevention Program developed by PCA, DPCP, and Stout Street Clinic



# CO State Highlights

---

- 5 CO health centers have participated in clinic redesign
- CO health centers have access to retinal camera through CCMCN (Colorado Community Managed Care Network)
- Denver Health participating in Planned Care Collaborative
- People's Clinic as spread to other conditions: TB, HIV, Hep B